

VILLAGE BUZZ

A MONTHLY ONLINE MAGAZINE FOR VILLAGES NESTLING IN AND AROUND THE NADDER VALLEY

DECEMBER 2023



**We wish all our readers
a very Merry Christmas and
a peaceful New Year**



This is a PDF file with INTERACTIVITY.
Simply **CLICK** or **TAP** any email, web address or page link.

MOULDING

BUILDING FOR GENERATIONS



For the very best in renovation, maintenance, landscaping and project management for residential building projects of all sizes. The trusted building partner for residential extensions, alterations, general maintenance and repairs; right up to spectacular country house building and restoration. Mouldings are renowned for their quality, care and specialist skills.

mouldingthebuilder.co.uk • 01722 742228

NADDER VALLEY

— EXECUTIVE PRIVATE HIRE SERVICE —

Based near Tisbury providing luxury nationwide and international transport specialising in airports, seaports and long distance travel.



WIFI available upon request

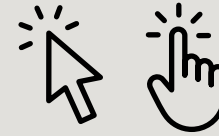
Our luxury fleet includes:
Mercedes E-Class Estates & Saloon

Contact Stephen or Darren:

07484 634262

enquiries@naddervalleytravel.co.uk

www.naddervalleytravel.co.uk



Contents page

Just **click** or **tap** on any of the panels below to take you to the relevant page.



Species of the month
The Robin
Peter Thompson
page 4



Village Stuff

News from our villages
page 26



Poetry:
In the bleak midwinter
Christina Rossetti
page 14



December's Brain Gym
page 30



A Christmas Firyale
page 16



One of my favourite recipes
page 32



What a load of rubbish!
An experiment
page 24



Nadder Valley Benefice
Church Services
page 36

Dear Reader: Do you have an interesting article inside you or a funny tale or memorable experience hidden away? A special poem, a fascinating family history or a passionate interest that you'd like to talk about? Please send it to us and we will create some beautiful pages on your topic for you, and everybody else to read and enjoy. Email me at: jan@villagebuzz.online (please note our new email address)



Species of the month

The Robin

Peter Thompson, Barford St. Martin

THE BIRD MOST ASSOCIATED WITH CHRISTMAS is the robin, which features on so many cards at this time of year. It was back in the 1860's that Britain's favourite bird (as declared by the Times newspaper after a national poll) first appeared on a Christmas card, carrying a letter in its beak. The postmen at this time wore a red tunic while at work and were nicknamed 'redbreasts' – hence the robin redbreast delivering the card.

The ruddock (which simply meant 'red' in Old English) as the robin was also known in days gone by got its red breast (which is actually more orangey than red) by attending to Jesus while he was being crucified on the cross. Legend has it that it was just a plain brown bird once, but seeing Christ on the cross in obvious pain, one flew up and tried to remove some thorns from the crown that had been placed on his head, then sang softly



PHOTO: PETER THOMPSON

to him while sitting on his shoulder. It was while the bird was tending Jesus that a drop of blood fell onto the robin's breast, staining it for evermore.

We perhaps notice robins more at this time of year as their numbers swell due to the arrival of incomers. These are migrant robins escaping the colder weather of Scandinavia and central Europe to spend the short winter days in the milder British climate. Robins are also one of the few birds to sing throughout the winter months, indeed their songs get louder and more prolonged at this time of year as they are beginning to pair up for the forthcoming breeding season.

Robins may look cute, but they are fiercely territorial and will chase and fight intruders that come into their area. The territory varies in size depending on how good the habitat is, but on average it is just over an acre, so an area the size of a professional football →



PHOTO: PETER THOMPSON



CLICK or TAP to go back to the CONTENTS PAGE



PHOTO: PETER THOMPSON

pitch could have around six territorial robins all singing at once – so no wonder we notice them! Fights between robins have been known to end in death for the loser, and it is not just other robins who need to be careful. The little greyish brown dunnock is also detested, probably because they compete for a very similar diet of small worms and insects. We are all used to the ‘tame’ robin that comes to check you out if you are gardening, especially digging, as you will be turning up worms and other tasty morsels. Interestingly though, European robins are more timid and don’t exhibit this behaviour. robins have been

observed following wild boar around as they nuzzle and push up the soil, so perhaps ‘our’ robins became bold while following boar around in times when they were plentiful in this country! So, you gardeners out there are just viewed by our robins as modern-day boars!

Happy Christmas to you all! — PT

Peter Thompson lives in Barford St. Martin and has worked in conservation and farming all his life. He is Chair of the Salisbury & District Natural History Society and would be delighted if readers joined either the society’s Facebook page or the society itself – or indeed both! If you are interested, please see details on the right.

SALISBURY & DISTRICT NATURAL HISTORY SOCIETY



REGULAR FIELD MEETINGS & INDOOR TALKS

Founded in 1952, the society studies and records the natural history of Salisbury and the surrounding area.

No expertise is needed to join us! Everyone with an interest in nature and the countryside is welcome.

Annual subscription is only £10
Family membership – £15
Junior membership – Free

So, if you would like to find out more about the wildlife in your local area, and meet friendly, like-minded people, go to:

www.salisburynaturalhistory.com



www.facebook.com/groups/salisburynaturalhistorysociety

Lawn care to the highest possible standards

Get an INSTANT, no obligation quote by using our online lawn measuring tool in 3 easy steps:

[GET INSTANT QUOTE](#)

- 1 Enter your postcode
- 2 Outline your lawn
- 3 Submit your details



What makes Lawntech stand out from the crowd?

- 🌿 A track record of over 30 years experience, delivering consistent professionalism
- 🌿 Highly qualified and accomplished technicians with over 130 years of combined experience
- 🌿 Offering a sustainable approach to lawn care, using semi organic fertilisers. Fully organic treatment programme available

FREEPHONE 08000 665 465

Free to call - landlines and mobiles

info@lawn-tech.co.uk

www.lawn-tech.co.uk



Lawntech™



CLICK or TAP to go back to the CONTENTS PAGE



Boiler Servicing & Maintenance

BREAKDOWNS | REPAIRS | OIL | GAS | LPG

Mark Benfield

01747 828689 or 07974 249287

mark@mabheatingservices.co.uk

Join our Heating Oil BUYING CLUB!

and SAVE up to 10% on your heating oil cost!

- FREE TO JOIN
- Independent of suppliers
- Order for more than one location
- Pay the supplier direct
- Local suppliers and depots
- Fortnightly reminders and opportunities to place orders
- Monthly budget scheme available
- Over 1200 members buying 1.5 million litres annually!

FOR MORE INFORMATION & FREE REGISTRATION

www.nadder.oilbuyingclub.com



COMPTON MCRAE

KITCHEN | LARDER | CAFÉ
CHEESE | WINE | SEMLEY



01747 448750

info@comptonmcræ.com

www.comptonmcræ.com



Monday to Friday 9am-4pm

Saturday 9am-3pm

Unit 2 Chaldicott Barns, Semley SP7 9AW



Beautifully Built to Last

Award winning building contractors covering every detail of your project from concept to hand over



P.F. Parsons Ltd

Hindon | 01747 820 422 | www.pfparsons.co.uk

[pfparsonsltd](https://www.instagram.com/pfparsonsltd)

Village Buzz has a new, easily memorable web & email address!



villagebuzz.online
wishing you all a very Merry Christmas

gill@villagebuzz.online | jan@villagebuzz.online



Christina Rossetti (1830-1894) occupies a significant place in the Victorian era, her life intricately intertwined with the Pre-Raphaelite Brotherhood led by her brother, Dante Gabriel Rossetti. Born into an artistic family in London, Christina's poetry reflects the Pre-Raphaelite aesthetic, characterised by vibrant colours, detailed landscapes, and a return to medieval themes. Her verses, often infused with spirituality, harmonised perfectly with the movement's emphasis on nature and intricate beauty. As a devout Anglican, her religious devotion permeated her work, aligning with the Pre-Raphaelites' exploration of spiritual and earthly elements. Her debut, 'Goblin Market and Other Poems,' showed her to be a profound voice, inspiring not only her brother's artworks but also contributing significantly to the movement's literary endeavours. Christina Rossetti's association with the Pre-Raphaelites enriches the understanding of her poetry and reflects the artistic intricacies of the Victorian age.

'In the Bleak Midwinter' is probably Christina Rossetti's most famous poem, though perhaps not the one that's most recognisable as being written by her, because many of us who are familiar with it, nowadays only know it as a carol.

In the Bleak Midwinter

CHRISTINA ROSSETTI

In the bleak midwinter, frosty wind made moan,
Earth stood hard as iron, water like a stone;
Snow had fallen, snow on snow, snow on snow,
In the bleak midwinter, long ago.

Our God, Heaven cannot hold Him, nor earth sustain;
Heaven and earth shall flee away when He comes to reign.
In the bleak midwinter a stable place sufficed
The Lord God Almighty, Jesus Christ.

Enough for Him, whom cherubim, worship night and day,
Breastful of milk, and a mangerful of hay;
Enough for Him, whom angels fall before,
The ox and ass and camel which adore.

Angels and archangels may have gathered there,
Cherubim and seraphim thronged the air;
But His mother only, in her maiden bliss,
Worshipped the beloved with a kiss.

What can I give Him, poor as I am?
If I were a shepherd, I would bring a lamb;
If I were a Wise Man, I would do my part;
Yet what I can I give Him: give my heart.

A beautiful gift idea about our locality this Christmas



*Gift wrapping not included

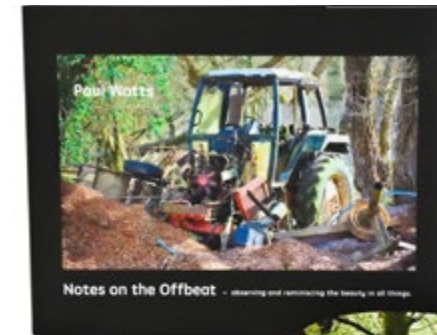
An extravaganza of local photography, created while out and about in South Wiltshire in pursuit of the aesthetic and unusual. It will connect with those who enjoy the quiet contemplation of some of the stranger things that surround us and who appreciate the ethereal and ever changing quality of remote landscapes and derelict places.

This is a large 'coffee table' book with 128 pages and 350 colour photos, many as full page plates. Sixteen 'poems' infuse a further dimension to these stunning images.

Available from
AMAZON
at **£48.00**



Available from
PAUL WATTS
at **£38.00**

www.paulwatts.net



CLICK or TAP to go back to the CONTENTS PAGE

A Christmas Firytale

Connie Furze – Compton Chamberlayne

It was the first of December and all the fir trees at the Christmas tree farm were starting to become anxious. This was the first day the Christmas trees went on sale and all the trees were hoping to be chosen by the most caring families in the area. Some families wanted small trees, some were looking for tall trees, some were looking for medium-sized trees. But the one thing that everybody wanted was for their tree to be a perfect specimen – a sturdy vertical trunk, beautiful evenly spaced branches and a thick canopy of fresh green pine needles.

A rustle went through the serried ranks of Christmas trees as they all vied to make themselves as attractive as they possibly could be so they would be the first to be chosen.

In a small clearing, to the side of the main bulk of trees, stood two other trees hoping not to be missed in the buying frenzy...

The first tree, tall and magnificent, reached up to the sky with perfectly symmetrical branches adorned with rich green needles. Its appearance was flawless and attracted the attention of families searching for their perfect Christmas centrepiece. A few metres away from it stood a much smaller ordinary tree with untidy, straggly branches; its shape not as perfect as its handsome neighbouring tree. However, this unassuming little tree possessed something that the tall beauty lacked — deeper roots, firmly anchored in the soil.

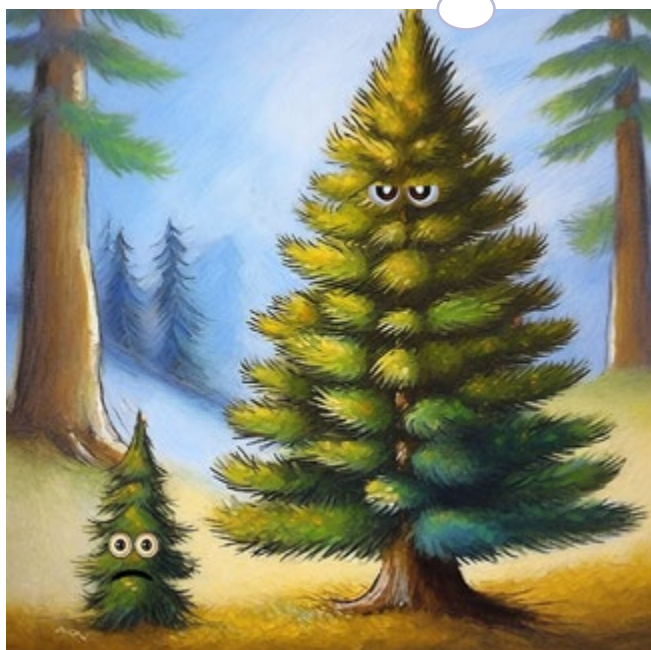
The tall tree, proud of its stature and beauty, looked down on the smaller tree and, with a sneer and hint of arrogance, called out, 'Hey, Stumpy! Why do you bother trying to

look good? With your straggly branches and scrawny trunk, you look a mess! Nobody will want to buy you! Look at me, with my straight strong trunk. I'm tall and my beautifully symmetrical branches are long and perfect for displaying exquisite baubles, sparkling tinsel and twinkling lights. I'm sure to be the centre of attention in any household this Christmas!'

With a measured confidence, the shorter tree replied, 'I may not be as grand as you, my branches may flop in all directions and my trunk may not be perfectly vertical, but I have roots that run exceptionally deep. These roots connect me firmly to the ground and give me strength and stability. Agreed, I am probably not the most eye-catching tree around here but I am secure and well-grounded.'

As the December days passed, many families visited the farm and sure enough, the tall proud tree was soon chosen by a delighted family. It was carefully pulled out of the ground, bundled up, and taken away to be put in a pot and decorated with pretty ornaments and lights to spend Christmas in a warm, cosy living room.

The shorter tree watched as its proud, but arrogant and condescending neighbour was driven away but it didn't feel any real sense of loss. Instead, it embraced its connection with the earth and the life energy it drew from



the soil. It knew that it might not be the most beautiful tree on the farm but it had found contentment.

Christmas Eve arrived and with it a powerful storm that battered the countryside. At the tree farm, the shorter, sturdy tree stood firmly against the wind and rain, its roots anchored strongly in the ground. The wind whistled fiercely

through its small, straggly branches and spindly trunk but the tree felt contentment in being in the right place. It may not have been the most glamorous specimen but it was deep-rooted and felt sound and secure. Whereas, in the warm family home and despite being sheltered from the storm, the tall perfect tree wobbled around in its new pot as its roots had no deep soil in which to anchor themselves. The family struggled to keep it upright as it was swaying from left to right all the time. Eventually, realising that it would always be unstable, they placed it in a tight corner to try and give it some support.

So, on Christmas Day, both trees stood upright. The tall tree sparkling



with lights and ornaments, was standing proudly in a warm living room. The shorter tree was holding its own in the wind-blown landscape, comforted knowing it was securely nestled in the soil.

Some years passed and the seasons turned. On the Christmas tree farm the small, straggly tree had never been bought but, with its roots firmly anchored in the soil it feasted on the nurturing earth and flourished. It grew slowly into a majestic, handsome conifer with branches stretching out wide, its trunk grew thick and its whole canopy was covered with lush, rich pine needles.

The perfect tree on the other hand, had fared less well — after that first glorious family Christmas, its beauty began to fade. It was put outside, the pot was never enlarged to accommodate its growth and the family gradually forgot to water it. Eventually, as its neglected pine needles dropped messily all around, it became a shadow of its former self and the family, having lost all interest in it, took it to the local dump where it was ignominiously converted into chippings.

In the end, the story of the two Christmas trees leaves us to ponder this thought:

The charm of mere appearances and glittering treasures is fleeting, like the vanishing whisper of a candle's flame. Whereas embracing our real selves, nurturing our inner strengths, and deriving pride from our roots endow us with a wholehearted resilience that shields us against life's challenges and gifting us serenity and contentment.





Salisbury District Hospital Stars Appeal launch Christmas Raffle

A CASH PRIZE OF £1,000 is the star prize in this year's Stars Appeal Christmas Raffle, sponsored by FJ Chalke. The second prize is £500, third prize £250, plus many more cash prizes to be won! Tickets cost just £1 each and are available both online at www.starsappeal.org, from Stars Appeal ticket sellers in the hospital's main entrance and the Stars Appeal Bookshop at Salisbury District Hospital.

Money raised will help towards the £1 million the hospital charity aims to raise each year to fund projects across Salisbury District Hospital. These include 20 specialist cots for newborn babies costing £38,000, a £50,000 additional endobronchial ultrasound scope for the Respiratory Department to help diagnose patients with lung cancer and other related conditions, and a £15,000 mechanical CPR machine. This is in addition to ongoing projects funded by the charity including provision of accommodation for parents of babies and children in hospital, support for patients with cancer, and free Wi-Fi. You can see full details of these projects and many more, at: www.starsappeal.org/our-work

Mr Graham Branagan, Consultant Surgeon at Salisbury District Hospital and Chair of the Appeal Ambassadors, said: 'By taking part in the Christmas raffle you will be helping the Stars Appeal to do more to support patients and staff at our Hospital. We couldn't do it without you, thank you!'

George Chalke, Dealer Principal of FJ Chalke, said: 'Having seen first-hand how local people benefit from projects funded by the Stars Appeal, like the breast unit, new scanners and accommodation for parents with poorly children and babies, we are delighted to continue our support for this amazing charity.'

STARS APPEAL
Salisbury Hospital's Charity

Christmas Raffle

Win £1,000 this Christmas

1st prize = £1,000
2nd prize = £500
3rd prize = £250

... plus many more cash prizes

Enter at: starsappeal.org

Online entries will close on January 4th. Paper ticket stubs must be returned to the Stars Appeal by January 8th. The draw will take place on January 11th 2024, winners will be announced at starsappeal.org

Tickets are £1 each and are available online at: www.starsappeal.org or at the main entrance of Salisbury District Hospital. Books of tickets are also available on request from the Stars Appeal office by calling: **01722 429005** or emailing to: info@starsappeal.org



ACCOUNTANCY SERVICES

Salisbury and the Nadder Valley

Are you a small business or individual looking for help with your accounts, VAT or self assessment tax returns?

Do you need help with Making Tax Digital? If so, get in touch!

Sara Sawyer, MAAT

EVE DAY ACCOUNTANCY Ltd

info@eve-day.co.uk

07919 664160



TANK SERVICES



HEATING OIL TANKS

Replacement Oil Tanks

Emergency Holding Tanks

Tank Relocation

Heating Oil Tanks

Diesel Storage Tanks

Rainwater Harvesting System

- ✓ DOMESTIC
- ✓ AGRICULTURAL
- ✓ COMMERCIAL

Call today
01722 714514



www.tankservices.co.uk



Did you know we supply to retail as well as trade?



Loose & bagged aggregates, building materials, porcelain & natural stone, timber, cement, concrete blocks **IN STOCK & AVAILABLE NOW!** Also reclaimed stock.

Collection and delivery available at **VERY** competitive prices.



LOCAL DELIVERY AVAILABLE

FREE QUOTATIONS FOR your landscaping project enquiries-kdc@outlook.com

www.kdcpavingandlandscapes.co.uk



Unit 1, Bratch Lane, Dinton, Salisbury SP3 5EB.
LANDSCAPING ENQUIRIES
enquiries-kdc@outlook.com
SUPPLIES STORE ENQUIRIES
shop-kdc@outlook.com

01722 500055

[@KDClandscapesupplies](https://www.facebook.com/KDClandscapesupplies)



Do you need help caring for your feet?

Foot Health Practitioner
Nicky Telling DipCFHP MPSPract

Offers Treatments:
Nails Cut and Filed
Callus, Corns & Verrucas
Thickened and Fungal Nails
Diabetic Foot Care

Book Now 01722 742123
mobile 07369 210800

No 31 Hair and Beauty
Silver Street, Wilton



CLICK or TAP to go back to the CONTENTS PAGE



COMPTON SMITH INTERIORS



COMPTON SMITH INTERIORS



www.comptonsmith.co.uk
FULL INTERIOR DESIGN SERVICE

- Interior decorating consultancy.
- Bespoke curtains, blinds and upholstery.
- Suppliers of well-known specialist paints, wallpapers & fabrics: *Farrow & Ball, Little Greene, Pierre Frey, Colefax & Fowler, Sanderson Design Group, Lewis and Wood and many more designers.*

Monday to Friday: 8.30am to 5.30pm
Friday: 8.30 to 5.00pm
Saturday: 9.30am to 1.00pm

 10d Wincombe Business Park, Shaftesbury, Dorset SP7 9QJ
Tel: +44 (0)1747 850150 info@comptonsmith.co.uk 

 [CLICK or TAP to go back to the CONTENTS PAGE](#)



One week's total plastic rubbish



Plastic rubbish remaining after home-recyclable items were removed

What a load of rubbish!

Plastic recycling at home: an experiment

Gill Fisk – Compton Chamberlayne

One day this summer, out of curiosity, we decided to do an experiment. Several months ago, we became aware that the majority of our rubbish seemed to be plastic in one form or another and this alarmed us. So, for one week we decided to separate all our plastic packaging from our other recyclables so we could see exactly how much plastic our 2-person household collected in that time and also what percentage of it was actually recyclable.

At the end of that week, we spread all the plastic packaging onto a large sheet and photographed it (above). Then we removed all the items that could be currently recycled at home to see what remained that was not recyclable and photographed that too (opposite page). Horrifyingly, there was more plastic that was unrecyclable than could be recycled. Not very reassuring for the planet.

Looking more closely at the spread of unrecyclable items, we found: Fish vacuum-sealed in a tray that it was impossible to get into without a sharp

knife or scissors. Also, the tray was recyclable but the film was not and as the film was welded to the tray it was impossible to separate out. The paper label was not easily removed either. Into landfill then.

Cat food pouches that cannot be recycled at home and so have to be taken to carrier bag recycling points at supermarkets. Who will have the patience or time to rinse these all out and keep them at home somewhere (if you have only one cat that's over 21 per week) until the next trip to the supermarket or dump? Why not return

to tins which were easily recyclable with household collections?

Packaging for razors/blades in several layers, each so thick that you need a bomb to break through them. It is also a sure way to slice your finger open on the sharp edges. Surely, it does not need to be so ridiculously indestructible?

KitKat chocolate bars now wrapped in plastic that, although it is made from a proportion of recycled plastic, is not actually recyclable at home but yet again, has to be taken to a supermarket point. This 'environmentally friendly' wrapping replaced paper and foil both of which were easily recyclable.

Yeo yogurt cartons which are recyclable but not the thin plastic pull-off lid inside.

Tea packaged in a foil bag inside a cardboard carton. The carton recyclable, the foil bag not. Didn't tea used to be packed in paper bags?

Black trays or packaging which is not recyclable, why not change the colour so it can be.

Plastic net bags for onions and fruit are not recyclable, why not use string or paper net bags or no bags at all?

It would seem to us that, while suppliers continue to try to make plastic packaging recyclable, there is still a huge amount to be done to improve this. It's no good proudly saying that your packaging is recyclable and you have therefore 'done your environmental bit' if the small print tucked in a corner says 'only at supermarket points'. Rightly or wrongly, people lead busy lives and, however willing they are, will only recycle if it's made simple and easy for them. If we can work towards recycling pretty much all plastics at home, not at different places (dump, supermarkets, shops), then people will be happy to do so. But first, manufacturers really have to get their act together and reduce the range of plastics used so they can be recycled at home. Or indeed, stop using plastic as packaging when there is something more environmentally-friendly available.—GF

Teffont Magna

Teffont Evias



Nadder Valley Gardening Club...

...is thriving and we are keen to encourage new members to join us in 2024. We have members from Barford, Chilmark, Dinton, Fovant, and Teffont; we welcome all from within the Nadder Valley area.

We have an interesting number of events taking place throughout the coming year. These include a Quiz, talks with guest speakers (which take place at 7pm in the Village Hall, Teffont), visits to local, and not so local, gardens and a social gathering.

Membership is £10 per annum.

Guests are welcome at £5 per person for the talks and quiz.

Entry for garden visits is additional to all. If you would like more information or an application form please contact Tina Fox:

tinafox1811@gmail.com

or telephone 01722 716010

Barford St Martin

Burcombe



TEA and CHATS

We are having a Christmas quiz and a Christmas sing-along



There will be tea, coffee and Christmas biscuits, cakes and mince pies.

**Tuesday 12th December,
2.00pm – 4.00pm**

**St Martins Church,
Barford St Martin**

ALL ARE WELCOME

Jenny Barrett
jennybarford@gmail.com

Sutton Mandeville

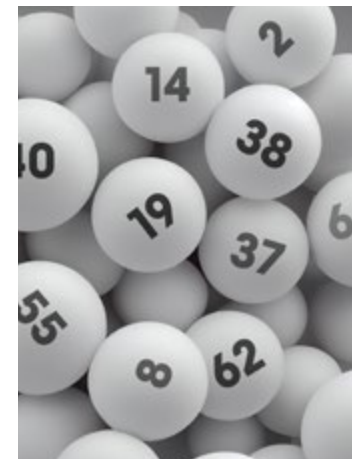


**MONTHLY
DRAW RESULTS**

OCTOBER 2023

All Saints Church
Sutton Mandeville

1st £40 — 35
2nd £20 — 76
3rd £10 — 18



To join in please contact
Kate Clutterbuck
kateclutterbuck5@gmail.com

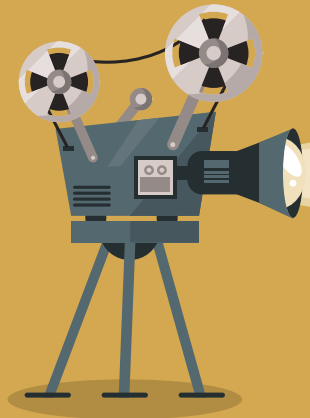


NOT TO BE MISSED



Mophead Mildred

It's raining again ...



Moviola Cinema

Bishopstone

Moviola film nights are held in Bishopstone Village Hall SP5 4AA, usually on the last Friday of the month, at 7.30pm. Doors open at 7.00pm when a bar and snacks are available. Bookings should be made with Caroline either by phone 01722 781044 or email: bvhticketoffice@btinternet.com — Entry is £6, paid on the door by cash, card or cheque.

A Haunting in Venice 12a

26 January 2024



A Haunting in Venice is set in eerie, post-World War II Venice on All Hallows' Eve and is a terrifying mystery featuring the return of the celebrated sleuth, Hercule Poirot. Now retired and living in self-imposed exile in the world's most glamorous city, Poirot reluctantly attends a séance at a decaying, haunted palazzo. When one of the guests is murdered, the detective is thrust into a sinister world of shadows and secrets.

Cast: Kenneth Branagh, Tina Fey, Camille Cottin, Kelly Reilly, Jamie Dornan, Michelle Yeoh, Jude Hill, Riccardo Scamarcio, Kyle Allen, Ali Khan
Director: Kenneth Branagh.



MOVIOLA LTD EXISTS TO PROVIDE A RANGE OF HIGH QUALITY CINEMA-RELATED EVENTS FOR PEOPLE LIVING IN RURAL PARTS OF THE UK, WITH THE AIM OF REDRESSING THE IMBALANCE BETWEEN TOWN AND COUNTRYSIDE IN ARTS AVAILABILITY AND PARTICIPATION.

	3			8		9		
8		9					5	
	6				5			
			3					
	2			4		1	6	
1						8		7
		1				6	8	
		5	8		3		1	
	4				6	3	7	

1		2		3		4			5	6		7		8
9									10					
									11					
13		14												
15							16				17			
18											19			
20														
24								25						
26									27					



TO COMPLETE THESE PUZZLES PLEASE PRINT THIS DOUBLE PAGE SPREAD ON YOUR PRINTER.

WHEN USING YOUR PRINTER:
 Ensure your page is set to **LANDSCAPE** mode.
 This PDF file treats each double page spread as one single page.
SO TO PRINT THIS SPREAD SET YOUR PRINTER TO PRINT PAGE 16 ONLY.

DO NOT PRINT AT ACTUAL SIZE BUT ENSURE THE PRINT IS REDUCED TO FIT THE SHEET.



HOW TO PLAY SUDOKU

The objective of the puzzle is to complete the grid so each of the rows, columns and 3 x 3 sub-grids contains the numbers 1 to 9. The challenging part of the puzzle is that each number can only appear once per row, column, or sub-grid.

SOLUTION PAGE 41



December's Brain Gym

Across

- ___ Theron, South African-American actress who played Stella Bridger in the 2003 remake of the film The Italian Job (8)
- Tropical tree with a very thick trunk, whose fruit has an edible pulp called monkey bread (6)
- Robert ___, English poet who wrote The Pied Piper of Hamelin (8)
- ___ Street, a 1959 semi-autobiographical collection of linked short stories by V. S. Naipaul (6)
- American singer-songwriter who sung "You deserve a break today" in the advertising campaign for McDonald's (5,7)
- The Muse of lyric love poetry (5)
- ___ Stones, a group of three megalithic oolitic limestone monuments near Long Compton, Warwickshire (9)
- American state known as the "Land of Ten Thousand Lakes" (9)
- Aromatic flower-bud which yields an essential oil used to relieve abdominal pain and toothache, and flavour food (5)
- A sweet liqueur with a chocolate and vanilla flavour (5,2,5)
- Martin ___, German theologian whose list of Ninety-Five Theses in 1517 incited the Protestant Reformation (6)
- The quarter of the sky where the sun, stars and planets set (8)
- Female forename in several European countries, originally meaning "born again" (6)
- Archetypal working-class male from Southeast England with a large disposable income but without culture or taste (5,3)

Down

- Country of origin of Javier Sotomayor, the only person to have cleared eight feet in the high jump (4)
- An extension of a nerve cell or neuron which transmits impulses away from the cell (4)
- The easternmost of the Canary Islands, whose capital is Arrecife (9)
- Fashion designer who founded the Fashion and Textile Museum in Bermondsey, London, in 2003 (6,6)
- 1979 film directed by Ridley Scott, which was promoted by the tagline "In space no one can hear you scream" (5)
- Cocktail drink of curacao, vodka with a dash of lemonade or fruit cordial (4,6)
- The leading sheep of a flock (10)
- The First Lady of the Philippines from 1965 to 1986, famed for her collection of clothing, art and jewellery (6,6)
- In architecture, bearing a decoration reminiscent of a mass of curly worms (10)
- Town in Cornwall which is divided from its suburb Newport by the river Kensey (10)
- A member of an Independent Order founded in Salford in 1835, as part of the British temperance movement (9)
- Latin term for permission granted by a bishop to a priest to move on to another diocese (5)
- A raised horizontal bar, four inches wide, on which gymnasts perform balancing exercises (4)
- A small lightweight sub-machine gun designed chiefly by Shepherd and Turpin at Enfield (4)





One of my favourite recipes

Compton Chamberlayne

Tomato, ricotta and basil galette

Serves 4

Ingredients

- 100g ricotta
- 2 tablespoons extra virgin olive oil
- 2 x 275g packs of cherry or baby plum tomatoes
- 2 garlic cloves, sliced
- 215g sheet puff pastry, defrosted if using frozen
- 3 tablespoons grated parmesan cheese
- Handful of thyme sprigs
- Handful of basil leaves, finely chopped plus extra leaves to serve
- Beaten egg to glaze



Method

1. Preheat oven to 150° C/gas mark 2/130°C fan.
2. Put ricotta in a sieve lined with kitchen paper and leave to drain.
3. Meanwhile, put the oil and tomatoes in a roasting tin, turning to coat. Scatter over the garlic and thyme and season. Roast for 1 hour until soft, turning after 30 minutes. Remove from oven and leave to cool a little. Turn oven up to 220°C/gas mark 7/200°C fan.
4. Sit pastry on a parchment-lined baking sheet and score a 1cm border round the edges. Prick the middle with a fork then put in the oven for 5 minutes. Remove from oven, push down the middle if risen, then brush with a little beaten egg avoiding the border. Return to the oven for 5 minutes.
5. Mix the parmesan and chopped basil into the ricotta, season then dot teaspoonfuls over the middle of the pastry (now removed from the oven!). Place the roasted tomatoes on top, discarding the thyme sprigs but reserving the oil they were cooked in. Brush the border with the remaining beaten egg and bake for 10-15 minutes until puffed and golden.
6. Remove from the oven and cool for 5 minutes. Drizzle over a little of the reserved roasting oil and garnish with torn basil leaves.
7. Serve with a fresh green salad*.

*Simple, quick and delicious salad dressing

- 2 tablespoons organic sunflower oil (or olive oil if preferred)
- 1 tablespoon white condiment (like a white balsamic vinegar)
- 1 generous teaspoon of Dijon mustard

Put all ingredients into a small bowl and whisk until mixed.

The beauty of this recipe is that it can be easily adjusted for any amount of salad. Just keep the proportions roughly the same eg:

- 2 dessertspoons oil / 1 dessertspoon condiment / 1½ heaped teaspoons mustard..... or.....
- 4 tablespoons oil / 2 tablespoons condiment / 2 teaspoons mustard.

The mustard can be tweaked to suit your taste. No sugar is required as the white condiment is sweet enough.



THE WILTSHIRE BOBBY VAN TRUST

Registered Charity No: 1153790



VOLUNTEER



If your passionate about making a difference become a Wiltshire Bobby Van Stay Safe Online Volunteer.

We are committed to ensuring our volunteers feel valued and recognised for everything they do.

- * This is a role suited to someone who is reliable, has time to commit to about one day a week and wants to make a real difference, to not only the safety and security of vulnerable people, but also the feeling of security when using the internet. Online exploitation and fraud are the fastest growing area of crime, and the elderly are particularly a target.
- * Volunteers will visit and work with individuals in their own homes assessing how they use their internet and smart technology then provide advice and guidance to make them less likely to become a victim of crime and to feel safer using the internet. Volunteers can also give group talks where the volunteer will provide an input with the same goals, but to community groups and organisations. We will give up-to-date information and advice on computer and internet security.
- * The successful applicant will receive an Induction which will include an overview of WBVT including administrative procedures, DBS Check, the loan of IT equipment if required & reimbursement for travel expenses plus accompanying an existing volunteer to a 1 to 1 home visit and a group talk. The succesful applicant will need to have access to a car or the means to be able to travel to different locations to carry out referrals.

**For further information contact Toni Evans
WBVT Stay Safe Online Manager Email: Toni@wbvt.org**



Fovant

FIL GROUP
FOVANT INDEPENDENT LADIES

Thursday 7th December

7.00 pm

Fovant Village Hall

Christmas Party with Buffet

Tickets Members £25
Non-members £30
Partners Welcome!
Limited Places

Special Offer
Book & Pay by 23rd November
Free drink at the bar!



Bar!

Prosecco & Canapes
**
Braised Beef with
Red Wine & Chestnuts
Roast Roots French Bread
Salmon Coulbiac Winter Salads
Spinach & Pine Nut Tart (V)
Spiced Coconut Chickpeas
**
Panna Cotta with
Shortbread Biscuit
Italian Christmas Pudding Cake
Trifle
**
Mince Pies & Coffee/Tea

More details e : filgroup15@gmail.com
t : 01722 714654 / 01722 714900

Christmas Charity Donation

At Christmas many of us like to give something to those who are in need. Once again, instead of bringing a present to church at Christmas, we invite you to contribute to the work of two of our local charities – everything you give will be used locally, with no admin costs. Last year your generosity was so gratefully received and this year, with the rise in the cost of living, it is needed more than ever.

The Food Banks provide food boxes for those in need. **The Refuge** provides safety for families who have had to flee from abuse.

Please contact the Revd Jo Naish on revdjoannanaish@gmail.com or any member of the Nadder Valley ministry team to find your local collection point for goods and tokens. Food needs to be well within use by date and please do not wrap goods, as this helps distribution.

Goods and tokens received by December 10th will be able to reach those in need in time for Christmas. But don't worry if you miss the deadline – your gift will still be very much appreciated in the New Year. Thank you so much for your help.

Jo Naish

For the FOOD BANK we ask for:

Tinned and **packet goods** that do not require much fuel to heat or cook. You might like to add some Christmas cheer:

Christmas crackers
Christmas pudding
Cranberry sauce
Boxes of chocolates
Tinned food
Biscuits

For the SALISBURY REFUGE we ask for supermarket tokens

Tesco is a great choice as residents have easy access to a large store, but Sainsbury and M&S are also good.

A token, however small, gives people who have fled from abuse, their freedom again.

Freedom to choose presents for their children, to replace cherished items left behind, or to furnish themselves with the basic clothing or other necessities of daily life.



DATE	3 December			10 December			Midweek			17 December			Midweek			24 December			25 December			31 December								
SUNDAY	Advent 1			Advent 2			Carol Services			Advent 3			Carol Services			Christmas Eve			Christmas Day											
SOUTHERN AREA																ADVENT 4														
Ansty	-	-	-	11.15	PC	GS	-	-	-	-	-	-	16.30	23 December Carols	GS	-	-	-	11.15	AAC	GS	-	-	-	-	-	-			
Compton Chamberlayne	09.30	PC _T	GS	-	-	-	-	-	-	-	-	-	-	-	-	22.00	PC _T	TM	-	-	-	-	-	-	-	-	-			
Fovant	08.00	HC02T	SE	-	-	-	-	-	-	-	-	-	14.00	18 December Dinton School Carols	GS	-	-	-	09.30	PC	GS	-	-	-	11.00	PC	GS	-	-	-
Sutton Mandeville	18.00	EBCP	GS	09.30	McW	GS	-	-	-	-	-	-	-	-	-	17.00	Carols	GS	-	-	-	-	-	-	-	-	-	-	-	-
Swallowcliffe	11.15	PC _T	GS	18.00	EBCP	MH	-	-	-	-	-	-	-	-	-	22.00	PC _T	GS	11.15	AAS	JA	-	-	-	-	-	-	-	-	-
NORTHERN AREA																														
Barford St Martin	11.15	AAC	EB	09.30	McW	LAY	-	-	-	16.00	Carols	EB	-	-	-	22.00	PC	EB	-	-	-	-	-	-	-	-	-	-	-	-
Baverstock	-	-	-	-	-	-	18.00	15 December Carols	EB	-	-	-	-	-	-	-	-	-	09.30	PC	SE	-	-	-	-	-	-	-	-	-
Chilmark	16.00	Advent Carols and Readings	EB	09.30	AAS	EB	11.00	15 December Chilmark & Fonhill Bishop School Carols	EB	11.15	AAC	JN	17.00	22 December Carols	EB	22.00	PC	MG	09.30	AAC	EB	-	-	-	-	-	-	-	-	-
Dinton	09.30	AAC	EB	-	-	-	-	-	-	18.00	Carols	JA	09.30	20 December Dinton School Carols	EB	16.00	Crib Service	EB	09.30	AAC	CF	-	-	-	-	-	-	-	-	-
Teffont Evias	-	-	-	-	-	-	-	-	-	18.00	Carols	EB	-	-	-	-	-	-	11.15	AAC	EB	-	-	-	-	-	-	-	-	-
Teffont Magna	-	-	-	11.15	AAC	EB	-	-	-	-	-	-	-	-	-	-	-	-	-	-	-	-	-	-	-	-	-	-	-	-
WESTERN AREA																														
Chicklade	-	-	-	-	-	-	-	-	-	-	-	-	18.00	19 December Carols	JN	18.00	PCBCP	JN	-	-	-	-	-	-	-	-	-	-	-	-
Hindon	09.30	PC	JN	09.30	AAC	TM	-	-	-	-	-	-	18.00	18 Dec Carols	JN	22.00	PC	JN	09.30	AAC	JN	-	-	-	-	-	-	-	-	-
Fonhill Bishop	17.00	EBCP	JMH	08.00	HCBCP	JMH	-	-	-	09.30	MBCP	JA	18.00	20 December Carols	JMH	-	-	-	09.30	PCBCP	MH	-	-	-	-	-	-	-	-	-
Fonhill Gifford	08.00	HCBCP	JMH	11.15	MBCP	JMH/JD	-	-	-	08.00	HCBCP	SE	16.00	23 December Carols	JMH	-	-	-	11.15	PCBCP	JMH	-	-	-	-	-	-	-	-	-
Tisbury	09.30	AAC	JMH/JA	09.30	PC	JMH/JD	11.00	13 December St John's School Carols	JMH/JA	09.30	PC	JMH/NW	-	-	-	08.00	HCBCP	SE	09.30	PC	JMH/JA	-	-	-	-	-	-	-	-	-
							17.00	12 December St John's School Carols	JMH/JA				19.30	18 December Village Carols	JMH	16.00	Crib Service	JMH/JA												
																22.00	PC	JMH												

Graham's farewell service

SERVICES

- AAC All Age Communion
- AAS All Age Service
- BCP Book of Common Prayer
- CbE Communion by Extension
- CW Common Worship
- E Evensong or Evening Prayer
- FC All Age Family Communion
- HC Holy Communion (*said*)
- HC02T/C Order 2 Communion, *traditional/contemporary*
- M Mattins or Morning Prayer
- MPr Morning Praise

- PC Order 1 Communion (*with hymns*)
- PC_T Order 1 Communion, *traditional language (with hymns)*
- PC02T Order 2 Communion, *traditional language (with hymns)*
- PC02T/C Order 2 Communion, *traditional/contemporary*
- RS Reflective Service
- SoP Songs of Praise
- SoW All Age Service of the Word

CLERGY

- CF Colin Fox
- EB Elaine Brightwell
- GS Graham Southgate
- JA Judy Anderson
- JD Julie Dunstan
- JMH Juliette Hulme
- JN Jo Naish
- MG Michael Goater
- MH Mark Hayter
- NW Nigel Worn
- SE Simon Evans
- TM Tony Monds

CLICK or TAP to go back to the CONTENTS PAGE



FOR A HARD COPY OF THE CHURCH TIMES PLEASE PRINT THIS DOUBLE PAGE SPREAD ON YOUR PRINTER.

WHEN USING YOUR PRINTER: Ensure your page is set to **LANDSCAPE mode**.

This PDF file treats each double page spread as one single page. SO TO PRINT THIS SPREAD SET YOUR PRINTER TO PRINT **PAGE 19 ONLY**.

DO NOT PRINT AT ACTUAL SIZE BUT ENSURE THE PRINT IS REDUCED TO FIT THE SHEET.

After over twelve years as Team Rector of the Nadder Valley, Graham Southgate has accepted the Bishop's invitation to be Rector of the new benefice of Upper Stour and Maiden Bradley.

Graham will be priest for two parishes — Upper Stour (the villages of Bourton, Kilmington, Stourton, and Zeals) and Maiden Bradley — and five churches, within the Heytesbury Deanery. Graham will be remaining, therefore, in the Sarum Archdeaconry of the Diocese of Salisbury. Graham expects to move after Christmas to The Rectory at Zeals.

NADDER VALLEY BENEFICE

**The farewell to
GRAHAM SOUTHGATE
as Team Rector of the Nadder Valley
will take place at a Parish Communion in
SAINT GEORGE'S CHURCH FOVANT,
on Sunday 31st December,
beginning at 11.00am
*All Welcome***



Come and join us for a time of quietness and space to find

Healing and Wholeness

We invite you to join us
for our monthly time of prayer and contemplation -
for yourself and for those whom you care about.
A time to remember all those in difficulties
or alone in this special time of the year



3.00pm

Wednesday December 13th

St Andrew's Chapel, St John the Baptist Church, Tisbury



“The free gift of God is eternal life in Christ Jesus our Lord” Romans 6:23



Christmas Nativity

When my niece Bethany was little, I bought her a crib set for Christmas from the Early Learning Centre. It had the usual figures: Mary, Joseph, a shepherd, sheep, three wise men, a donkey, an angel and of course a baby in a manger. The figures were bright, chunky and designed for little hands to hold. She loved this nativity set and played with it for years at Christmas.

One of the things I too enjoy about Advent is getting my nativity set out in readiness for Christmas. When I was stationed as an Army Chaplain at Elmpt in Germany with the Royal Signals (formerly RAF Brüggen) the soldiers had a larger than life nativity scene lit up just at the entrance to the camp. You could not miss it as you drove in. It was whilst I was here I bought the beautiful hand carved wooden crib set in the photo from a little shop in Brüggen. Each year I get it out and wait until Christmas Eve to place the Christ child.

Where did the idea for nativity sets come from? It originated from St Francis in Italy. He lived in the 13th century and after visiting the Holy Land and seeing the setting for Christ's birth, death and resurrection, he wanted to create a real life nativity scene in Italy to help people understand the importance of the incarnation – Christ as God being born as a human baby in simplicity amongst us. On Christmas Eve a cave was prepared with real animals and a hay-filled manger. A wooden doll was placed in the manger. Fires lit the dark cave and people carrying candles flocked to see the scene within the rocky crags just outside Greccio. The story goes that a real baby appeared in the empty manger and Francis picked up the infant and embraced him. Later miracles supposedly happened; people were healed by touching the straw of the manger where the Christ child had lain.



In Italy, all churches have a nativity scene at Christmas throughout the Epiphany season and in many you are encouraged to look for the nativity scene amongst lots of other normal village activities going on around. The church may even depict a whole model village of Bethlehem.

All our churches in the Nadder Valley have a Nativity scene. Do go and visit your local church and have a look. Wander in and wonder. The nativity reminds us each year that Jesus was born as a human child, yet was also divine. He was human like we are and understands our frailties. He came to love the world and show us how to love each other.

**Wishing you all a very
Happy Christmas.**

**Revd Juliette Hulme
Team Vicar**



Barford St Martin

Thank You!

A big thank you to all Barford St Martin Children's Society Collection Box holders. This year we raised a total of **£466.09** thanks to your kind and generous donations. Thanks to you, the Society can continue to be there for the children in this country.

Sue Haddock



Compton Chamberlayne

Village Hall for hire

Our village hall is available to hire for celebrations, presentations, exercise or whatever else you have in mind. Bunting is always included!

Contact Sara Willan
sarawillan@gmail.com

Get your business noticed in Village Buzz

ADVERTISE WITH US FOR 6 MONTHS — Half page – £60 | Whole page – £120 | Double page spread – £180
ADVERTISE WITH US FOR A WHOLE YEAR — Half page – £100 | Whole page – £200 | Double page spread – £300



SUDOKU solution
December 23
from page 30

7	2	3	4	9	1	8	5	6
9	6	1	5	2	8	3	4	7
4	5	8	3	7	6	9	1	2
3	8	2	9	6	4	5	7	1
6	7	9	2	1	5	4	3	8
1	4	5	7	8	3	6	2	9
8	3	7	1	5	9	2	6	4
5	1	6	8	4	2	7	9	3
2	9	4	6	3	7	1	8	5

CROSSWORD Solution
December 23
from page 31

CHARLIZE	BAOBAB												
U	X	A	A	L	L	E							
B	R	O	W	N	I	N	G	M	I	G	U	E	L
A	N	Z	D	I	E	E	L						
B	A	R	R	I	M	A	N	I	L	O	W		
V	L	R	A	E	A	E							
E	R	A	T	O	R	O	L	L	R	I	G	H	T
R	U	T	H	D	E	O	H						
M	I	N	N	E	S	O	T	A	C	L	O	V	E
I	C	D	M	H	N	R							
G	R	E	M	E	D	E	C	A	C	A	O		
U	S	X	S	R	B	B	S						
L	U	T	H	E	R	O	C	C	I	D	E	N	T
A	O	A	O	T	A	E							
R	E	N	A	T	A	E	S	S	E	X	U	A	N

WOULD YOU LIKE TO ADVERTISE WITH US BUT HAVE NO ARTWORK?

We will design and produce your ad for FREE*
* Minimum order, half page for 6 months.

jan@villagebuzz.online

Contact details:

Editor: Gill Fisk | gill@villagebuzz.online

Design & Advertising:

Jan Kalinowski | jan@villagebuzz.online
mobile: 07881 288027

Advertising & article submission deadline



Friday 15 December

If you plan to submit ready-made advertising please ensure that the file is in the format of either a high resolution Acrobat PDF file or a high resolution JPEG (300ppi) file – thank you.

VILLAGE BUZZ

A MONTHLY ONLINE MAGAZINE FOR VILLAGES NESTLING IN AND AROUND THE NADDER VALLEY

DECEMBER 2023

As an early Christmas present from us to all our business advertisers — we're doubling your space for no extra cost so making your ad

TWICE AS NICE!



We are scrapping our quarter-page format as we feel it is now too small to convey everything our advertisers wish to say about themselves and their business.

So from 2024 all existing quarter-page ads will be increased in size to our half-page format. All existing half-page ads and full-page ads on renewal will have the option to be increased in size to our full-page and double-page formats at no extra cost.

Ad Sizes & Prices:

Half-page ad (landscape 152mm x 106mm) or (portrait: 78mm x 216mm)

Full-page ad (portrait: 152mm x 216mm)

Double-page spread (landscape 322mm x 216mm)

6 MONTHS : Half-page – £60 | Full-page – £120 | Double-page spread – £180

12 MONTHS : Half-page – £100 | Full-page – £200 | Double-page spread – £300

jan@villagebuzz.online



CLICK or TAP to go back to the CONTENTS PAGE