

# VILLAGE BUZZ



A MONTHLY ONLINE MAGAZINE FOR VILLAGES NESTLING IN AND AROUND THE NADDER VALLEY

MARCH 2024

BARFORD ST MARTIN, BAVERSTOCK, BURCOMBE, CHICKSGROVE, COMPTON CHAMBERLAYNE, DINTON,  
FOVANT, SUTTON MANDEVILLE, SUTTON ROW, TEFFONT EVIAS, TEFFONT MAGNA, TISBURY, UGFORD



Welcome to our windy  
March edition



This is a PDF file with INTERACTIVITY.  
Simply CLICK or TAP any email, web address or page link.





We combine traditional building skills, passed down through generations, with modern day techniques and materials to fulfil your lifestyle aspirations.

That's why we make great buildings that stand the test of time. Buildings made for living. A place that people call home. Not just for now, but for generations to come.

**MOULDING**

THE COUNTRY HOUSE BUILDERS

01722 742228 | [thecountryhousebuilders.co.uk](http://thecountryhousebuilders.co.uk)



## Contents page

Just **click** or **tap** on any of the panels below to take you to the relevant page.



Species of the month  
**Silverfish**  
Peter Thompson  
**page 4**



News from our villages  
**page 24**



Poetry:  
**Early Spring**  
William Wordsworth  
**page 14**



One of my favourite recipes  
**page 35**



**'Hare-y' March winds blow**  
Bard of Compton  
Chamberlayne  
**page 16**



December's Brain Gym  
**page 36**



Mophead Mildred  
**page 20**



Nadder Valley Benefice  
**Church Services**  
**page 38**

**Dear Reader:** Do you have an interesting article inside you or a funny tale or memorable experience hidden away? A special poem, a fascinating family history or a passionate interest that you'd like to talk about? Please let us have it and we will create some beautiful pages on your topic for you, and everybody else to read and enjoy.

Please email me at: our **NEW** email address

**jan@villagebuzz.online**





Species of the month

# Silverfish

Peter Thompson, Barford St. Martin

**O**CCASIONALLY, if I get up in the night and wander through to the kitchen to get a drink, on turning the lights on, I sometimes see a few silverfish rushing around, attempting to quickly find a dark spot to hide. They are attracted to the tiny scraps of food that are left around the dog bowl (not that a labrador leaves much!) and sometimes they are to be found actually in the bowl, unable to climb back out up the slippery sides.

Silverfish belong to one of the most primitive insect orders, dating back more than 300 million years (perhaps even 400 million – what’s a million years amongst friends!) and they really don’t appear to have changed at all over that period. Silverfish never developed wings, making up for this lack of flight with their extreme speed. Their speed helps them dart for cover when exposed, keeping them safe from predators (like spiders) or even your shoe. They stay even safer by being most active at night.

Silverfish, so called because of the way they shuffle along slightly sideways reminiscent some say of a swimming fish, are insects with torpedo-shaped silver bodies measuring about 12mm in length when fully

grown. They have long fine antennae and three tail-like appendages at the rear. Despite the fact these curious little insects carry no diseases and pose no serious threat to humans they have long been denounced as a pest. This is probably due to the diversity of the silverfish diet which does not match well with modern living. Silverfish are not predators, but they can cause problems in the home where they will devour anything that gives them their starchy fix, from wallpaper and books through to glue. Incredibly however, they can live for a year without eating. The scientific name for the species is *Lepisma saccharinum* reflecting this tendency to eat starchy foods high in carbohydrates and protein.

There is no physical contact between mating silverfish. Instead, there can be a lengthy courtship ‘dance’ or ‘chase’ which can last up to an hour and a half. After this the male spins a small silken thread and places a drop of sperm on to it. The female will collect this sperm and use it to fertilise her egg. Juvenile silverfish look very much like adults, →



CLICK or TAP to go back to the CONTENTS PAGE



only slightly smaller. They will moult many times before they reach maturity and will continue to moult during their adult life (up to 30 times a year!) Silverfish can live for up to eight years.

The female can lay up to a hundred eggs in cracks and crevices and, depending on temperature, they normally hatch out in around six weeks. The first instar nymph moults its skin in seven to ten days' time and each subsequent instar (stage between moults) takes between two to three weeks, resulting in a total of around seven moults in all before they are fully grown. Unusually for insects, silverfish continue to shed their skins (up to fifty times in a lifetime) even though they are fully grown, and this may have something to do with the long life span they have for such a tiny creature. Silverfish may not superficially look as though



they have changed much in the last 300 million years, but that does not mean that they do not continue to evolve. They appear to be resistant to many insecticides, presumably because they've been around for so long and have built up various tolerances along the way.

So, like them or loathe them, or indeed live in blissful ignorance of their existence, I suspect silverfish will be around for a long time yet. After all, they have lived through dinosaurs becoming extinct, and perhaps if we don't get our act together, they might witness our demise as well. — PT

Peter Thompson lives in Barford St. Martin and has worked in conservation and farming all his life. He is Chair of the Salisbury & District Natural History Society and would be delighted if readers joined either the society's Facebook page or the society itself – or indeed both! If you are interested, please see details on the right.



## Do you need help caring for your feet?

**Foot Health Practitioner**  
**Nicky Telling** DipCFHP MPSPract

**Offers Treatments:**  
Nails Cut and Filed  
Callus, Corns & Verrucas  
Thickened and Fungal Nails  
Diabetic Foot Care

**Book Now** 01722 742123  
mobile 07369 210800

No 31 Hair and Beauty  
Silver Street, Wilton

# SALISBURY & DISTRICT NATURAL HISTORY SOCIETY



## REGULAR FIELD MEETINGS & INDOOR TALKS

Founded in 1952, the society studies and records the natural history of Salisbury and the surrounding area. No expertise is needed to join us! Everyone with an interest in nature and the countryside is welcome.

**Annual subscription is only £10**  
**Family membership – £15**  
**Junior membership – Free**  
So, if you would like to find out more about the wildlife in your local area, and meet friendly, like-minded people, go to:

[www.salisburynaturalhistory.com](http://www.salisburynaturalhistory.com)



[www.facebook.com/groups/salisburynaturalhistorysociety](https://www.facebook.com/groups/salisburynaturalhistorysociety)





# Lawn care to the highest possible standards

Get an INSTANT, no obligation quote by using our online lawn measuring tool in 3 easy steps:

[GET INSTANT QUOTE](#)

- 1 Enter your postcode
- 2 Outline your lawn
- 3 Submit your details



## What makes Lawntech stand out from the crowd?

-  A track record of over 30 years experience, delivering consistent professionalism
-  Highly qualified and accomplished technicians with over 130 years of combined experience
-  Offering a sustainable approach to lawn care, using semi organic fertilisers. Fully organic treatment programme available

**FREEPHONE 08000 665 465**

Free to call - landlines and mobiles

[info@lawn-tech.co.uk](mailto:info@lawn-tech.co.uk)

[www.lawn-tech.co.uk](http://www.lawn-tech.co.uk)



**Lawntech™**



CLICK or TAP to go back to the CONTENTS PAGE





## Boiler Servicing & Maintenance

BREAKDOWNS | REPAIRS | OIL | GAS | LPG

Mark Benfield

01747 828689 or 07974 249287

[mark@mabheatingservices.co.uk](mailto:mark@mabheatingservices.co.uk)

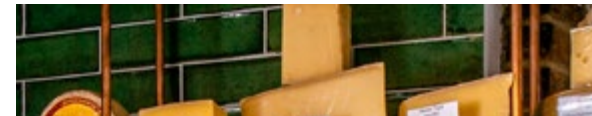
## Join our Heating Oil BUYING CLUB!

and SAVE up to 10% on your heating oil cost!

- FREE TO JOIN
- Independent of suppliers
- Order for more than one location
- Pay the supplier direct
- Local suppliers and depots
- Fortnightly reminders and opportunities to place orders
- Monthly budget scheme available
- Over 1200 members buying 1.5 million litres annually!

FOR MORE INFORMATION & FREE REGISTRATION

[www.nadder.oilbuyingclub.com](http://www.nadder.oilbuyingclub.com)



## COMPTON MCRAE

KITCHEN | LARDER | CAFÉ  
CHEESE | WINE | SEMLEY



01747 448750

[info@comptonmcræ.com](mailto:info@comptonmcræ.com)

[www.comptonmcræ.com](http://www.comptonmcræ.com)



Monday to Friday 9am-4pm

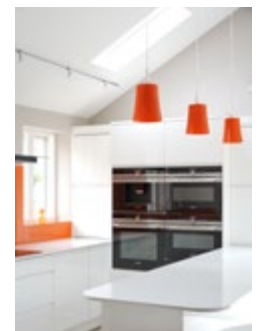
Saturday 9am-3pm

Unit 2 Chaldicott Barns, Semley SP7 9AW



Beautifully Built to Last

Award winning building contractors covering every detail of your project from concept to hand over



P.F. Parsons Ltd

Hindon | 01747 820 422 | [www.pfparsons.co.uk](http://www.pfparsons.co.uk)

[pfparsonsltd](https://www.instagram.com/pfparsonsltd)

Village Buzz has a new, easily memorable web and email address!



**villagebuzz.online**  
after all, that's where we are – *online*

[gill@villagebuzz.online](mailto:gill@villagebuzz.online) | [jan@villagebuzz.online](mailto:jan@villagebuzz.online)





Poetry Corner

With the vernal equinox occurring on March 19th, we step into the vibrant world of William Wordsworth's poem 'Lines Written in Early Spring.' Imagine yourself surrounded by 'a thousand blended notes of birdsong, witnessing the first 'primrose tufts' pushing through winter's grasp'. This poem invites you to celebrate nature's resilience and joy of new beginnings.

## Lines Written in Early Spring

WILLIAM WORDSWORTH

I heard a thousand blended notes,  
While in a grove I sate reclined,  
In that sweet mood when pleasant thoughts  
Bring sad thoughts to the mind.

To her fair works did Nature link  
The human soul that through me ran;  
And much it grieved my heart to think  
What man has made of man.

Through primrose tufts, in that green bower,  
The periwinkle trailed its wreaths;  
And 'tis my faith that every flower  
Enjoys the air it breathes.

The birds around me hopped and played,  
Their thoughts I cannot measure:—  
But the least motion which they made  
It seemed a thrill of pleasure.

The budding twigs spread out their fan,  
To catch the breezy air;  
And I must think, do all I can,  
That there was pleasure there.

If this belief from heaven be sent,  
If such be Nature's holy plan,  
Have I not reason to lament  
What man has made of man?

**William Wordsworth**, (1770-1850), was an English poet whose Lyrical Ballads (1798), written with Samuel Taylor Coleridge, helped launch the English Romantic movement.

Wordsworth was born in the Lake District, the second of five children of a modestly prosperous estate manager. He lost his mother when he was seven and his father when he was thirteen, and the orphan boys were sent off by guardian uncles to a grammar school at Hawkshead, a village in the heart of the Lake District.

He moved on in 1787 to St. John's College, Cambridge. Repelled by the competitive pressures there, he elected to idle his way through the university. In 1790 he embarked on a long walking tour through revolutionary France. There he was caught up in the passionate enthusiasm that followed the fall of the Bastille, and became an ardent republican sympathiser. After taking his Cambridge degree he returned to France, where he formed a passionate attachment to a Frenchwoman, Annette Vallon. However, before their child was born in December 1792, Wordsworth had to return to England and was cut off there by the outbreak of war between England and France.

On his return to England he became friends with a fellow poet, Samuel Taylor Coleridge. They formed a partnership that would change both poets' lives and alter the course of English poetry.

# Stars Appeal Bookshop and bucket collection volunteers raise over £62,000

Volunteers have raised a total of £62,653.53 in the Stars Appeal Bookshop and through bucket collections at Salisbury Hospital during 2023.

The volunteers were joined by staff from the Pembroke Cancer Unit and Dr Anna Barton, who is also one of charity's hospital ambassadors, for a special presentation to celebrate the achievement.

Last year, the bookshop, which is in the Main Entrance of the hospital, raised £43,035.04. This is up on the £36,481.30 total raised in 2022. The Stars Appeal bucket collectors in the hospital raised £19,618.49.

Helena Sinclair of the Stars Appeal, Salisbury Hospital's Charity, said: 'We are hugely grateful to our fantastic volunteers for their continued support and commitment. They not only make a fantastic contribution to our fundraising but are also a friendly face to support patients and visitors who may be going through a tough time. We want to say a big

thank you to our volunteers and to everyone who supports us through the bookshop and bucket collections for their generosity. The money raised will help us to do even more for patients, their families, and staff across Salisbury District Hospital.'

In 2023, the Stars Appeal funded projects across Salisbury hospital totalling £1.5million, including an additional echocardiogram for the Cardiac Investigation Unit, a 3D ultrasound machine for the Gynaecology Department, a virtual reality headset for the Children's Unit and the latest baby heart monitors, as well as ongoing projects like Stars Appeal Wi-Fi and wellbeing support for patients with cancer.

The charity is aiming to raise £1 million to continue its ongoing work and fund a variety of state-of-the-art equipment including videoscopes for head and neck cancer patients, a mechanical chest compression machine, and specialist cots for newborn babies on the labour and postnatal wards.

**To find out more about the charity's projects visit [www.starsappeal.org](http://www.starsappeal.org)**



Stars Appeal Bookshop and bucket collection volunteers with staff from the Pembroke Cancer Unit and Dr Anna Barton. Picture by Spencer Mulholland.





# 'Hare-y' March winds blow

The Bard of Compton Chamberlayne

In the month of March, the North Wind reigns supreme. Compared with his serene siblings, he's a boisterous jester, lashing the world with sudden playful gales. His arrival isn't heralded by gentle breezes, but with a tempestuous roar that rattles windows and swirls chimney smoke.

This year, the March winds were restless. Winter, a tenacious tyrant, refused to relinquish its icy grip. Trees stood skeletal, silently waiting for the sun's caress. The land slumbered, cloaked in a brown hush beneath a leaden sky. The March winds, impatient for spring's vibrant symphony, resolved to intervene.

One blustery dawn, they assembled in a whirlwind, their whispers weaving through the air. The North Wind, his voice thundering like an avalanche, proclaimed, 'Let us rouse the land from its slumber! We shall banish winter's chill and usher in rebirth!'

With a mighty gust, they descended upon the slumbering world. Through valleys they cavorted, whirling leaves in a frenetic dance. They nudged slumbering branches, urging them to unfurl new life and howled across the landscape, chasing away the last vestiges of snow.

But in their exuberance, the March winds forgot their gentler touch. They lashed the land with icy fingers, sending shivers down the spines of creatures emerging from their winter havens. The sea churned under their fury and ships tossed about like mere toys. Fear replaced anticipation in the hearts of the people.



Two hares, huddled by their form, witnessed the unfolding chaos and their hearts ached for the gentle spring they remembered. The wind tugged at their long ears and lashed their fur as they raised their voices in unison and cried 'Oh, March winds,

temper your fury! Remember the promise you hold, the whispered warmth, the dance of new life. Blow gently, coax the flowers, guide the sunbeams, and awaken the land with love, not fear.'

Their cry, carried by the wind, reached the ears of the March winds which paused, surprised by the tiny voices within the storm. Shame washed over them as they saw the frightened hares and huddled animals anxiously seeking shelter.

With a sigh, The North wind softened its voice. 'You are right, little hares, we were blinded by our haste. We shall blow with care, carrying the promise of spring in our hearts.'

And so, the March winds changed their tune. They blew more softly now, carrying whispers of warmth and raindrops that glistened like diamonds in the sunlight. They coaxed buds from branches, tickled the noses of playful lambs, rabbits and hares, and sent ripples of laughter across the land.

The huddled hares smiled. They knew spring was truly on its way, ushered in by the playful, winds of March.

From that day on, the March winds never forgot the lesson learned from the two hares. They remained playful, even mischievous, but always with a touch of care, forever carrying the promise of spring in their hearts, a promise whispered on the wind. ■





## Stars Appeal launches Walk for Wards 2024

**SIGN UP for Walk for Wards 2024 to support the Stars Appeal, Salisbury Hospital's Charity. The annual sponsored walk around the Wilton House Estate, which attracts thousands of participants every year, takes place on Sunday, July 7.**

A special launch was held at Wilton House with Stars Appeal President, the Earl of Pembroke, who was joined by some of the charity's Hospital Ambassadors along with representatives from Salisbury Reds, who are the event's principal sponsors.

Consultant paediatrician and Stars Appeal Ambassador, Dr Rowena Staples, said: "Every day in our Children's Unit, Neonatal Unit and across the Hospital I see first-hand the difference the Stars Appeal makes to our patients, their families and visitors, as well as our hospital teams. From free Wi-Fi to state-of-the-art equipment such as the second MRI scanner and buildings like the Breast Unit.

*'Walk for Wards is the Stars Appeal's flagship event. Each summer my colleagues and I are amazed to see the huge number of people walking in support of their hospital. It is the support of the local community that helps to make our hospital and the Stars Appeal so special. I hope to see many of you walking in the beautiful Wilton Estate in support of the Stars Appeal. You will be helping to improve the hospital experience for all. Thank you.'*

A record-breaking total of £157,922 was raised at last year's Walk for Wards, which saw over 2,000 walkers turn out to support the event.

Walkers can choose from three routes including the family friendly 3k, a 5k walk or the more challenging 10k.

Walk for Wards is free to enter and held by kind permission of Lord and Lady Pembroke, with support from David Huckfield and his team of

marshals from Wilton Rotary Club. It also includes a free lunch and admission to the Wilton House gardens as well as the adventure playground after the event.

Lord Pembroke said: *'Walk for Wards is the most extraordinary family event, not only is it raising funds for some incredible Stars Appeal projects, but it is a really enjoyable day out with family, children, friends*



**Stars Appeal President, Lord Pembroke, with Stars Appeal Hospital Ambassadors, and representatives from Salisbury Reds. Picture by Simon Ward.**

*and colleagues. Wilton House is the most beautiful estate to host the event. All of us here love to share it. The energy of the event is extraordinary, and the atmosphere is not something anyone should miss.'*

Donations from Walk for Wards help the Stars Appeal towards its goal of raising more than £1million each year to fund projects supporting local people being treated at Salisbury District Hospital. The charity is currently looking to fund a variety of state-of-the-art equipment including videoscopes for head and neck cancer patients, a mechanical chest compression machine, and twenty specialist cots for newborn babies on the labour and

postnatal wards. These are in addition to ongoing projects the charity provides, which include support for patients with cancer, a play assistant for the Children's Unit, Stars Appeal Wi-Fi, and accommodation for the parents of seriously ill children in hospital.

Last year, donations and fundraising enabled the charity to provide Salisbury Hospital's first 3D

ultrasound machine, a new plastic surgery theatre with state-of-the-art equipment, and the latest baby heart monitors.

Walk for Wards is sponsored by Salisbury Reds, who have also chosen the Stars Appeal as their Charity of the Year.

David Newton, operations manager of Salisbury Reds, added: *'We have long been supporters of Walk for Wards and of course Stars Appeal – which is our official good cause for 2024 and 2025. Many of our team have close links to the charity, and we're determined to help raise as much money as possible.'*

*The Walk for Wards event is a wonderful family occasion – offering local people the chance to be sponsored to enjoy the beautiful surroundings of the Wilton Estate. I can't think of a better way to enjoy a Sunday this summer, than to spend it in support of this vital community resource.'*

**Walkers are asked to sign up in advance and commit to raising at least £20 sponsorship per person for their chosen ward or department at Salisbury District Hospital. To sign up or for more information go to:**

[www.starsappeal.org/event/walk-for-wards](http://www.starsappeal.org/event/walk-for-wards)



## ACCOUNTANCY SERVICES

Salisbury and the Nadder Valley

Are you a small business or individual looking for help with your accounts, VAT or self assessment tax returns?

Do you need help with Making Tax Digital? If so, get in touch!

**Sara Sawyer, MAAT**

**EVE DAY ACCOUNTANCY Ltd**

[info@eve-day.co.uk](mailto:info@eve-day.co.uk)

**07919 664160**







## Mophead Mildred

# Spring is just around the corner!

Here we are almost into Spring again! Noticeably longer days are helping to dispel the months of winter darkness and feeling of hibernation with their anticipation of new growth and energy in the gently stirring garden. Despite the wet, warmer-than-average winter, plants and shrubs are slowly coming to life again. It's at this point that all fingers and toes are crossed that there will not be a late cold snap to burn the emerging green shoots of these early birds and I start to wonder which plants won't have made it through the winter.

This year the garden has far fewer crocuses than before, thanks to the squirrels that, last spring, proceeded to systematically find, dig up and eat as many corms as they could leaving the leaves lying alongside the empty holes. In the twelve years of making our garden this has never happened before. However, the happy, sunny daffodils are all shining away as ever, sparkles of gold against the dark damp soil. Also looking good are *cyclamen coum* with their attractive leaves and dainty pink and white blooms. These are perfect in shade and under shrubs and will steadily spread if they are happy.

Hellebores have looked good for the last month or so and will continue their flowering for a few more weeks. With the stunning range of colours available now –

yellow, pink, maroon, purple-black, white, speckled and the choice of flowers – single, double, frilled, it is hard to choose! Unless you want to retain a few flowers for self-seeding then cut the old flowering stems down before they look too scruffy so that the new leaves following on will be shown to their best advantage.

If you are still thinking of putting down soil improver, now is the time to get on and do it! Once plants are well into growth it will be rather difficult to get the mulch down between them without treading on them. When spreading it on your beds, make sure that you don't cover the crowns of any plants or go right up to the stems of shrubs.



Put down a two cm deep layer, leaving the same space clear round any stems and crowns to avoid burning. This will also help to suffocate any premature weed growth (it serves them right for being so forward!).

As always, dogwoods (*cornus*) grown for their fantastic display of colourful winter stems can be cut back now so bright new growth appears ready for next winter. Whether you cut them all back or just a third is up to you; either option is fine. Any roses that have escaped pruning so far really need to be done this month in order to be flowering in June.



If you haven't got round to it already then epimediums should now have their tatty last year's foliage cut right down to ground level. At this point be careful not to cut off the tiny curved new flower shoots as they will be emerging among the old leaf stems. A painstaking job but well worth it – then make a mental note to cut the leaves off a little earlier next year, in February perhaps when the buds are only just beginning to peep out at ground level and the risk of cutting them off is therefore much less.

And finally, a gentle word of warning: garden centres will already be full of enticing summer bedding plants. I would suggest that, unless you have a heated greenhouse or somewhere they can be protected from our inevitable late frosts, you don't buy them just yet. I wonder if it's just a marketing ploy to make you buy two lots of bedding as the first lot will inevitably die of cold!

**Enjoy this quiet gardening lull before the storm begins! — MM**

Top left: Crocus

Left: *Helleborus* 'Walberton's Rosemary'

Top right: *Cyclamen coum*







# COMPTON SMITH INTERIORS



## COMPTON SMITH INTERIORS



[www.comptonsmith.co.uk](http://www.comptonsmith.co.uk)  
FULL INTERIOR DESIGN SERVICE

- Interior decorating consultancy.
- Bespoke curtains, blinds and upholstery.
- Suppliers of well-known specialist paints, wallpapers & fabrics:  
*Farrow & Ball, Little Greene, Pierre Frey, Colefax & Fowler, Sanderson Design Group, Lewis and Wood and many more designers.*

**Monday to Friday: 8.30am to 5.30pm**  
**Friday: 8.30 to 5.00pm**  
**Saturday: 9.30am to 1.00pm**



10d Wincombe Business Park, Shaftesbury, Dorset SP7 9QJ  
Tel: +44 (0)1747 850150 [info@comptonsmith.co.uk](mailto:info@comptonsmith.co.uk)



CLICK or TAP to go back to the CONTENTS PAGE





Sutton Mandeville



### MONTHLY DRAW RESULTS JANUARY 2024

All Saints Church  
Sutton Mandeville

**1st £40 — 64**  
**2nd £20 — 74**  
**3rd £10 — 93**



To join in please contact  
Kate Clutterbuck  
[kateclutterbuck5@gmail.com](mailto:kateclutterbuck5@gmail.com)

## Monthly Draw

A CHANCE TO WIN A SHARE OF £70 PER MONTH

1st prize – £40  
2nd prize – £20  
3rd prize – £10

### It's time to renew or sign up for the 2024-5 All Saints' Church Monthly Draw.

Thank you for your valued support. The monthly draw has been very successful in raising funds to maintain All Saints' Church, Sutton Mandeville. Renewal of your membership is now due and we are asking subscribers to **please pay for all 12 months by March 31st**, ready for the April draw. For just £24 (£2 per month) you will secure a number in the monthly draw. You can secure any amount of draw numbers at £2 each. New subscribers very welcome!

**For further information contact:**  
**Kate Clutterbuck – [kateclutterbuck5@gmail.com](mailto:kateclutterbuck5@gmail.com)**  
**07817 440 710**

#### Rules

- All named applicants must be over 16 years old.
- A draw will determine the number allocated to each applicant, this number will be entered in each draw for the next 12 months.
- All numbers must be held for 12 months.
- All winners will be advised directly and prize money will be provided to the contact address by the 10th of the month following the draw.
- The results will be published online in the Village Buzz Magazine: [village-buzz.co.uk](http://village-buzz.co.uk) and on paper on the village notice board near All Saints' Church
- If demand exceeds/does not meet 125 numbers the organisers have the right to increase/decrease the prize money, the relationship of prize money to revenue will be maintained.
- The balance of the revenue after prize money and costs will be provided to the Parochial Church Council for use in maintaining All Saints Church.
- The draw can be discontinued with two months' notice and any overpayment will be refunded in full.
- The accounts of the draw will be subject to an annual independent inspection and will be lodged with the PCC minutes and displayed on village notice boards.



## All Saints' Church Monthly Draw RENEWAL FORM

Name
Address
Telephone Number
Email

I would like \_\_\_\_\_ number(s) for a period of **12 months at £24.00 per number** and I enclose payment of £..... I would prefer to pay online. If you are already participating, your numbers will remain unchanged unless you request otherwise. Please enclose a stamped addressed envelope if you require a receipt. Many thanks.

CHEQUES SHOULD BE MADE PAYABLE TO:  
**Sutton Mandeville Church Monthly Draw.**

PAYMENT ONLINE:

A/C Name: **Sutton Mandeville Church Monthly Draw**

A/C Number: **61764500** Sort code: **40 40 14**

**If you renew online, please let me know how many numbers you have renewed so I can make sure they are in the April draw.**

**Return completed forms to:**

**Kate Clutterbuck, The Mill, Sutton Mandeville, SP3 5LZ**  
**or by email: [kateclutterbuck5@gmail.com](mailto:kateclutterbuck5@gmail.com)**



**TO PRINT OUT THIS RENEWAL FORM:**

**IMPORTANT NOTE: This PDF file treats each double page spread as a single page.**

- 1) SET YOUR PRINTER TO PRINT **PAGE 13 ONLY**
- 2) Ensure your page is set to **LANDSCAPE** orientation.
- 3) Ensure your printing is reduced to fit your A4 sheet (**80%**). Do not print at 100%.





Fovant

# Fun Quiz

## Saturday 20 April

Doors open 6.00pm  
Chilli con Carne/Vegetarian Chilli Supper  
& Homemade Puddings!

**Tickets £10**  
**A bar will be available**

Get your teams of 6 ready! Guests booking individually will be joined with others to make up a team.

Early booking is strongly advised as these events are popular and numbers are limited. To make a booking please contact:

Mike Carey 01722 714633  
[mhcarey28@gmail.com](mailto:mhcarey28@gmail.com)

Celia Haselgrove 01722 714876  
[celiahaselgrove@btinternet.com](mailto:celiahaselgrove@btinternet.com)

Marilyn Willoughby 07760 439955  
[marilynann2011@gmail.com](mailto:marilynann2011@gmail.com)

Please advise of any dietary requirements for yourself or any guests at time of booking.



Fovant



## Cheese & Wine Tasting

### Friday 8 March

### 6.00pm

## Fovant Village Hall

Enjoy tasting carefully selected wines from around the world paired with tasty local cheeses. Evening sorted!

**Tickets £15** from  
[celiahaselgrove@btinternet.com](mailto:celiahaselgrove@btinternet.com)  
[derryn.m.hinks@gmail.com](mailto:derryn.m.hinks@gmail.com)  
Or [contact@fovantvillage.com](mailto:contact@fovantvillage.com)





## NOT TO BE MISSED

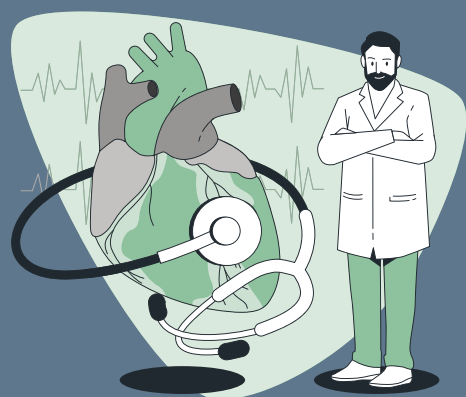
Dr Kinlin's Focus Session  
deferred from 22 February

### Thurs 28 March Part 2

4.00 –5.00pm Fovant Village Hall

## Heart Problems

Emotional Issues Part 2



## Bishopstone

Moviola film nights are held in Bishopstone Village Hall SP5 4AA, usually on the last Friday of the month, at 7.30pm. Doors open at 7.00pm when a bar and snacks are available.

Bookings should be made with Caroline either by phone 01722 781044 or email: [bvhticketoffice@btinternet.com](mailto:bvhticketoffice@btinternet.com) — Entry is £6, paid on the door by cash, card or cheque.



MOVIOLA LTD EXISTS TO PROVIDE A RANGE OF HIGH QUALITY CINEMA-RELATED EVENTS FOR PEOPLE LIVING IN RURAL PARTS OF THE UK, WITH THE AIM OF REDRESSING THE IMBALANCE BETWEEN TOWN AND COUNTRYSIDE IN ARTS AVAILABILITY AND PARTICIPATION.

# Moviola Cinema

### The Great Escaper <sup>(12a)</sup>

15 March 2024



A film that is quite emotional as a D-Day veteran 'escapes' the confines (not in a jailbreak sense) of his care home to attend the 70th anniversary in France, causing a media frenzy in the process! Michael Caine and the late Glenda Jackson give wonderful performances as the elderly couple in the care home, Caine playing Bernie the veteran in question and Jackson, Rene his devoted wife who covers up for him as much as possible and encourages him to follow his destiny. I am used to seeing the two actors in their pomp in sixties and seventies films so this is quite a change.

### Napoleon <sup>(15)</sup>

26 April 2024



Napoleon is a spectacle-filled action epic that details the chequered rise and fall of the iconic French Emperor Napoleon Bonaparte, played by Oscar®-winner Joaquin Phoenix. Against a stunning backdrop of large-scale filmmaking orchestrated by legendary director Ridley Scott, the film captures Bonaparte's relentless journey to power through the prism of his addictive, volatile relationship with his one true love, Josephine, showcasing his visionary military and political tactics against some of the most dynamic practical battle sequences ever filmed







## — Dinton Historical Society 2024 —

DHS have an interesting programme of talks and visits planned for 2024. We invite you to join us to start the year on **Thursday 21st March** when we will be joined by the **Wiltshire Home Guard Living History group**.

Our evening meetings are very relaxed with an opportunity to look at items from our small archive and a chance to chat over tea or coffee after the presentation. The two visits planned for this year include the option to travel by minibus from Dinton to Edington and the Royal Victoria Country Park.

### Edington

Edington is near Westbury and the White Horse and the site of a battle that changed England's history when King Alfred defeated the Danes at the Battle of Edington in 878. Edington Priory was founded by William Edington, the bishop of Winchester, in 1351. The priory church was consecrated in 1361.



### Royal Victoria Country Park

A country park in Netley, Hampshire, by the shores of Southampton Water. It comprises 200 acres of mature woodland and grassy parkland, as well as a small shingle beach. From 1863 until 1966, the site was home to the Royal Victoria Hospital.



We meet on the third Thursday of the month from March to September at 7.30pm, Dinton Village Hall SP3 5EB

Membership is £6 per annum. Guests are welcome to meetings at £3 per person.

Visits are additional to all.

If you would like more information or to join please contact Katherine Hepplewhite [dintonhistoricalsociety@gmx.co.uk](mailto:dintonhistoricalsociety@gmx.co.uk)

Join us on Facebook <https://www.facebook.com/dintonhistoricalsocietywiltshireuk>

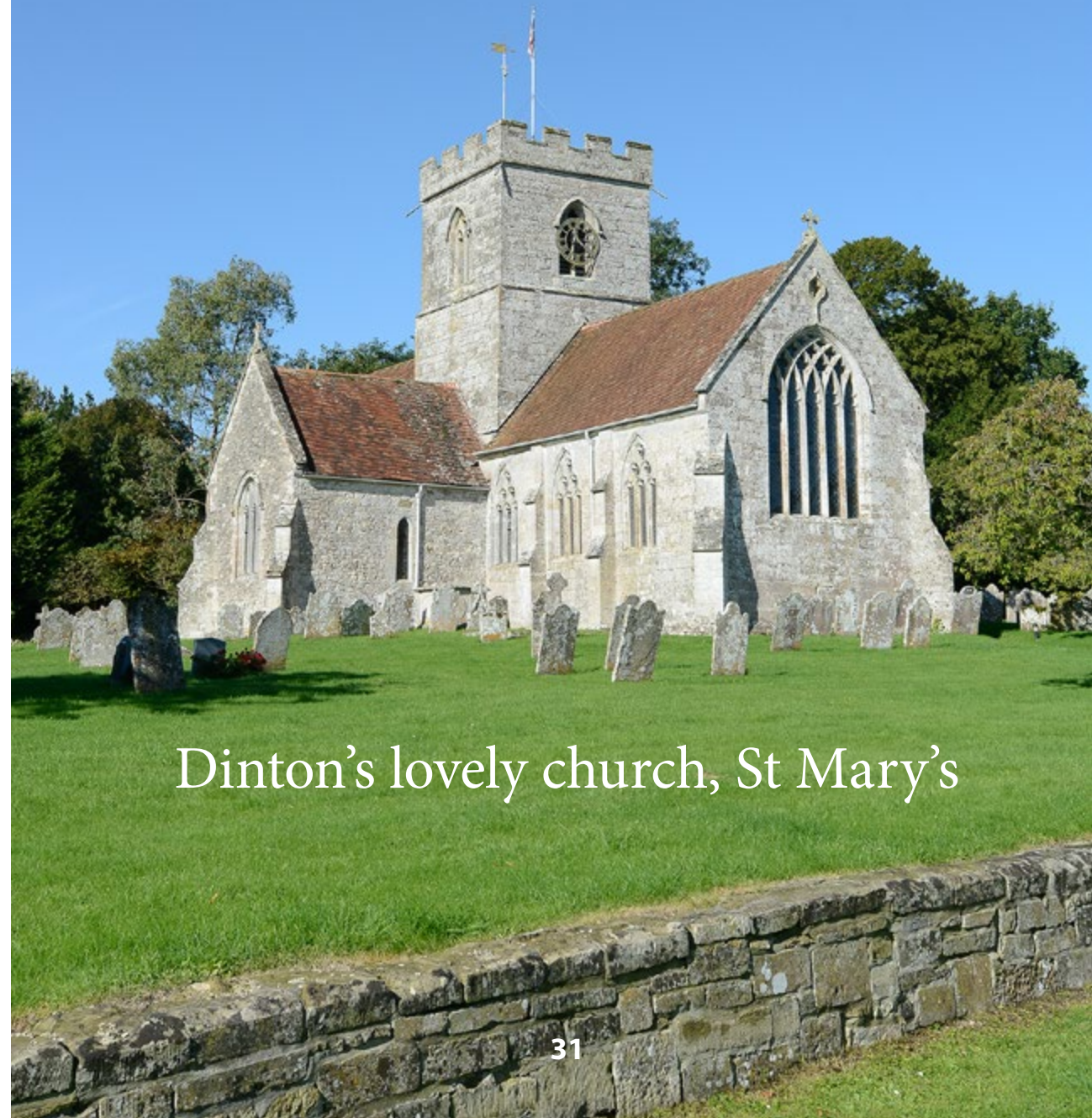
Find us online <http://www.southwilt.com/site/Dinton-Historical-Society/>



CLICK or TAP to go back to the CONTENTS PAGE



Philipps House, Dinton Park



Dinton's lovely church, St Mary's





Dinton



## Where has our footpath gone?

Trying to walk to Dinton a few weeks ago, we were rather bewildered to find that the angled section of footpath, shown within the red square, appeared to have vanished. From the little bridge over the Nadder almost up to the railway crossing, there is no obvious path or wire fence where there used to be both. Instead there is an area of untidy cut-down hedge growth, saplings and other trees that have just been left where they have fallen. It is very difficult to navigate through all the debris to try and find the now-disappeared footpath.

Does anyone know what is going on here and why this area has been left in such a mess? Is the footpath going to be reinstated soon?

**If any walkers in our readership can throw some light on this, it will be most welcome. — Editor**

**[gill@villagebuzz.online](mailto:gill@villagebuzz.online)**



Tisbury



## Can you help to record the Duke of Burgundy butterfly?

Wiltshire is an important stronghold for the Duke of Burgundy, the UK's fastest declining butterfly. Although many of the butterfly's populations are small and medium-sized those in southwest Wiltshire are faring better than elsewhere as there are still connections between populations. The Shaston Ridge (the ridge running south of the A30 between near Donhead St Andrew and near Burcombe) is one of its strongholds. However, our knowledge of its distribution and population sizes there is far from complete!

We have records from all along the ridge, but they have not been collected in a consistent manner. Nor have potential sites or all locations which previously held the species been visited recently. We'd like to recruit a team of volunteers to help undertake timed counts for Duke of Burgundy. This is a simple method of recording a single species and involves walking a set area and counting the number of Duke of Burgundy butterflies seen. All training will be provided, no experience is necessary just an interest in conserving a charming little butterfly speciality of our local area.

The more recorders we can recruit, the more sites we will be able to cover with this consistent recording system. Would you like to be involved? The survey will take place between Mid-May and Mid-June and we'll run some training before the flight season starts. Sites will be split and allocated across the team of volunteers, and I will be able provide ongoing support to build-up skills and share information about individual sites.

If you would like to take part, please contact me via the Tisbury Natural History Society email:

**[tisburynathist@gmail.com](mailto:tisburynathist@gmail.com)**

Andrew Graham





The Teffont Village Hall Management Committee is proud to announce the seventh

## TEFFONT TALK

# HIMALAYA ADVENTURE

7.30, Saturday 9th March, 2024



Simon Mabey is going to relate the story of his trek last November in support of a small Nepalese school high up in the Himalaya foothills at a village called Ghap.

The trek covered some 80 miles with perhaps 10,000 feet of ascent and descent. It included a night in a remote Buddhist monastery as well as a visit to the school meeting pupils and teachers.

The talk will be illustrated with slides and video clips.



Teffont Village Hall  
Doors open at 7 pm, talk starts 7.30 pm.  
Tickets £12 to include a glass of wine

Get yours from [rosechapmaneva@gmail.com](mailto:rosechapmaneva@gmail.com)  
Profits split between the Village Hall  
& Ghap School, Nepal



## One of my favourite recipes

Compton Chamberlayne

### It's another HOT SOUP time! — Broccoli Soup

**Cooking time: 35 minutes**  
**Serves 4**

Tasting this delicious broccoli soup, you'd never guess that it's made without cheese or cream. Its creamy texture and rich taste come from these plant-based ingredients:

#### Ingredients

- 2 tbsp extra-virgin olive oil, plus extra for drizzling
- 1 small yellow onion, diced
- 125g chopped celery
- 80g chopped carrots
- 450g broccoli, stems diced, florets chopped
- 1 small potato, diced (250g)
- 4 garlic cloves, minced
- 1 litre vegetable stock\*
- 750g cubed bread for croutons



- 125g raw cashews
- 1½ tsp apple cider vinegar
- ½ tsp Dijon mustard
- 60g fresh dill
- 1 tbsp fresh lemon juice
- ¾ tsp sea salt
- freshly ground black pepper

#### Method

1. Put the onion, celery, carrots, broccoli stems, salt, and pepper in a large pot over medium heat. and sauté until softened, about 10 minutes. Add the potatoes and garlic and stir.
2. Add the stock and simmer for 20 minutes until the potatoes are soft. Allow to cool slightly.
3. Set aside 1 cup of the broccoli florets to roast as a topping for the soup. Place the remaining florets in a steamer basket and set over a pot with one inch of water. Bring the water to a simmer, cover, and steam for five minutes until the broccoli is tender.
4. Meanwhile, place the reserved broccoli florets and the bread cubes on the baking sheets. Toss with a drizzle of olive oil and a pinch of salt and roast until the bread is crispy and the broccoli tender and browned around the edges, 10 to 15 minutes.
5. Transfer the soup to the blender and add the cashews, apple cider vinegar and mustard, and blend until creamy. Work in batches if necessary. Add the steamed broccoli florets, dill, and lemon juice, and pulse until the broccoli is incorporated but still chunky. The soup should be thick; if it's too thick, add 125ml water to thin to your desired consistency.
6. Season to taste and serve the soup in bowls with the roasted broccoli and croutons on top.

#### \*Homemade vegetable stock

Use onions, garlic, carrots, celery, and herbs like thyme and parsley.

Whether you're using whole vegetables or vegetable scraps, making homemade vegetable stock is incredibly easy.

First, wash the vegetables. Next, chop them. The shape isn't important – you just need to break them down enough so that they fit neatly in your saucepan.

Then simmer. Add the vegetables to a large pot with the salt, bay leaves, and peppercorns. Add 2½ litres of water and simmer, covered, for 1 hour.

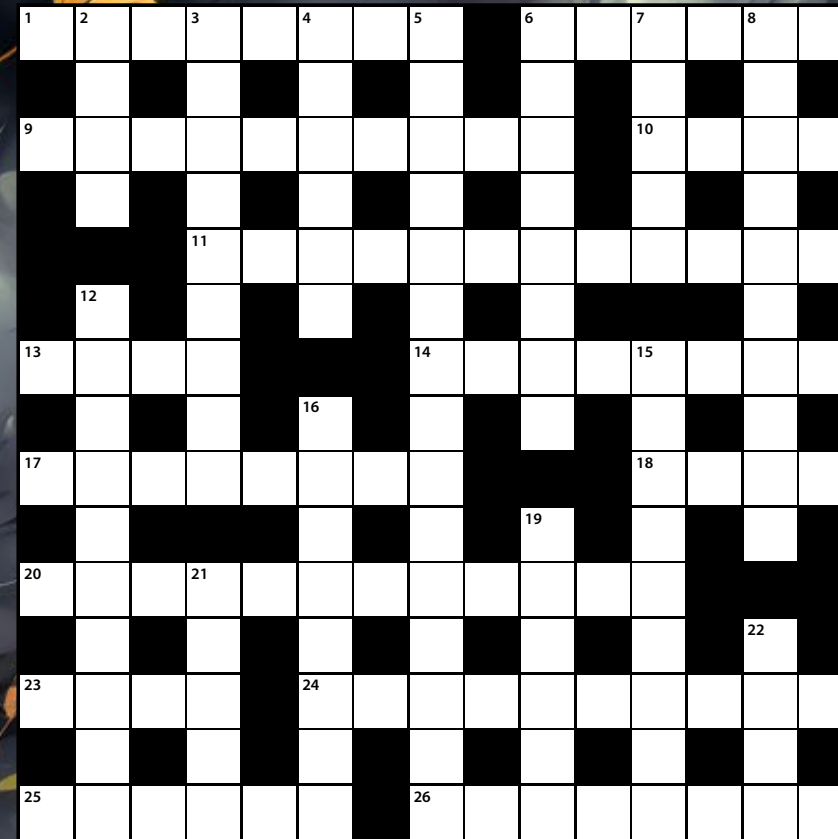
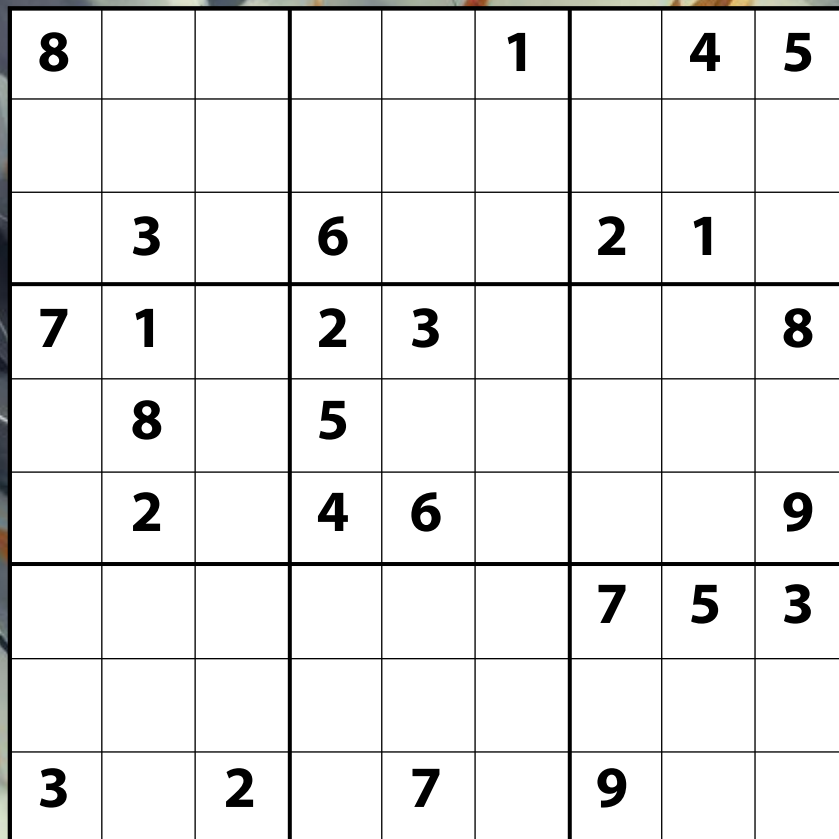
Finally, strain the stock through a fine mesh strainer to remove the vegetables and peppercorns.

**Storing and using homemade vegetable stock**  
Allow the stock to cool to room temperature. Then, store it in an airtight container in the fridge for up to five days, or freeze it for several months.



CLICK or TAP to go back to the CONTENTS PAGE





**TO COMPLETE THESE PUZZLES PLEASE PRINT THIS DOUBLE PAGE SPREAD ON YOUR PRINTER.**

**IMPORTANT NOTE:**  
This PDF file treats each double page spread as a single page.

- 1) Set your printer to print **PAGE 19 ONLY**
- 2) Ensure your page is set to **LANDSCAPE** orientation.
- 3) Ensure your printing is reduced to fit your A4 sheet (**80%**). Do not print at 100%.

**HOW TO PLAY SUDOKU**

The objective of the puzzle is to complete the grid so each of the rows, columns and 3 x 3 sub-grids contains the numbers 1 to 9. The challenging part of the puzzle is that each number can only appear once per row, column, or sub-grid.

**SOLUTION PAGE 43**



**March's Brain Gym**

**Across**

- 1 The region of Italy which forms the "toe" of its geographical "boot" (8)
- 6 \_\_\_ Mill, a BBC television studio complex in Edgbaston, Birmingham, from 1971 to 2004 (6)
- 9 In law, a joint heir to a property or an estate (10)
- 10 A T-shaped cross with a loop above the horizontal bar, the symbol of life (4)
- 11 Thomas \_\_\_, English artist who painted the full-length portrait The Blue Boy in 1779 (12)
- 13 The \_\_\_, gang who opposed the Puerto Rican Sharks in the musical West Side Story (4)
- 14 Courteously deferential and respectful (8)
- 17 Clive \_\_\_, inventor who produced the first slimline electronic pocket calculator in 1972 (8)
- 18 American psychedelic rock band who recorded the 1967 album Forever Changes (4)
- 20 Illustrator who became the inaugural British Children's Laureate in 1999 (7,5)
- 23 A group of islands off the west coast of Ireland, home of the eponymous cable-stitch knitted sweater (4)
- 24 An annual award given by UK's Crime Writers' Association since 1960 for the best crime novel of the year (4,6)
- 25 English city, known as Isca Dumnoniorum under Roman rule (6)
- 26 Hampshire village, the birthplace of pioneering naturalist and ornithologist Gilbert White (8)

**Down**

- 2 The smallest particle in an element which can take part in a chemical reaction (4)
- 3 Any medicine, such as aspirin, that reduces pain without inducing unconsciousness (9)
- 4 Shane \_\_\_, actor who plays Alfie Moon in the TV soap opera EastEnders (6)
- 5 Literally "a year of horrors", the term used by Queen Elizabeth II to refer to the royal misfortunes of 1992 (5,10)
- 6 Historically, a licensed seller of papal indulgences (8)
- 7 The \_\_\_, children's comic which includes the characters Minnie the Minx and Billy Whizz (5)
- 8 Body of water on whose shores the Swiss city of Lausanne lies (4,6)
- 12 Athenian tragedy by Sophocles about the king of Thebes who killed his father Laius and married his mother Jocasta (7,3)
- 15 A vocal exercise in which runs, scales, etc, are sung to the same syllable or syllables (9)
- 16 Kim \_\_\_, actress who played the Bond girl Domino Petachi in the film Never Say Never Again (8)
- 19 A member of a north-eastern Germanic people who overran Gaul, Spain, and North Africa, and sacked Rome in 455 (6)
- 21 A musical composition for nine performers (5)
- 22 Small family hatchback car produced by Spanish manufacturers SEAT since 1998 (4)


**SOLUTION PAGE 43**






DATE	3 March			10 March			17 March			24 March			25-28 March			29 March			31 March		
SUNDAY	Lent 3			Mothering Sunday			Passiontide begins			Palm Sunday			Holy Week			Good Friday			Easter Day		
SOUTHERN AREA													MAUNDY THURSDAY 27th 11.00 CHRISM EUCHARIST SALISBURY CATHEDRAL			DEVOTIONAL SRV. to S'cliffe					
Ansty	-	-	-	11.15	PC	JMH	-	-	-	11.15	PC	MH	-	-	-	09.30	to S'cliffe	11.15	PC	PM	
Compton Chamberlayne	-	-	-	11.15	AAS	EB	-	-	-	11.15	to Ansty	-	-	-	-	-	-	09.30	PC	PC	
Fovant	08.00	HC02T	EB	09.30	to Sutton	-	18.00	EBCP	MH	11.15	to Ansty	-	-	-	-	14.00	EB	09.30	PC	MH	
Sutton Mandeville	-	-	-	09.30	AAS	JA	-	-	-	11.15	to Ansty	-	-	-	-	-	-	11.15	PC02T	EB	
Swallowcliffe	11.15	PC <sub>T</sub>	AP	11.15	AAS	JN	08.00	HCBCP	JMH	11.15	to Ansty	-	-	-	-	09.30	MH	11.15	PC <sub>T</sub>	+RC	
NORTHERN AREA																					
Barford St Martin	11.15	AAC	EB	09.30	MP <sub>CW</sub>	LAY	09.30	HCBCP	MH	09.30	AAC+Baptism	EB	-	-	-	-	-	11.15	AAC	KR	
Baverstock	-	-	-	-	-	-	-	-	-	-	-	-	-	-	-	-	-	09.30	AAC	EB	
Chilmark	11.15	AAC	JN	09.30	AAS	EB	11.15	AAC	EB	11.15	M/MP	LAY	-	-	-	17.00	EB	11.15	AAC	JN	
Dinton	09.30	AAC	EB	11.15	AAS	JA	09.30	AAC	EB	09.30	M <sub>CW</sub>	MH	-	-	-	-	-	11.15	AAC	MH	
Teffont Evias	-	-	-	11.15	AAC	MG	-	-	-	-	-	-	-	-	-	-	-	-	-	-	
Teffont Magna	-	-	-	-	-	-	-	-	-	11.15	AAC	EB	-	-	-	-	-	11.15	AAC	CF	
WESTERN AREA																					
Chicklade	-	-	-	-	-	-	-	-	-	-	-	-	18.30	Tuesday 26th Compline	JN	-	-	08.00	HCBCP	JN	
Hindon	09.30	PC	JN	09.30	AAC	JN	18.00	ES <sub>BCP</sub>	JA	09.10	Procession and PC	JN/ +AR	18.30	Wednesday 27th Compline	JN	14.00	JN	09.30	PC	JN	
Fonhill Bishop	17.00	EB <sub>CP</sub>	JN	08.00	HC <sub>BCP</sub>	JMH	09.30	M <sub>BCP</sub>	JA	-	-	-	-	-	-	-	-	09.30	PC <sub>BCP</sub> CbE	JA	
Fonhill Gifford	08.00	HC <sub>BCP</sub>	SE	-	-	-	-	-	-	11.15	M <sub>BCP</sub>	JMH	-	-	-	11.15	JMH	11.15	PC <sub>BCP</sub>	JMH	
Tisbury	09.30	AAS	JA	09.30	PC	JMH	09.30	PC	JMH/ NW	09.00	PC	JMH	-	-	-	13.30	JMH/ JD	09.30	PC	JMH	
							18.00	Choral EB <sub>CP</sub>	JMH	10.00	Procession	JMH	18.30	Monday 25th Compline	JMH						
													19.30	Maundy Thursday 28th PC & Vigil until 22.00	JMH						

Come and join us for a time of quietness and space to find



## Wholeness and Healing

We invite you to join us for our monthly time of contemplation – and so to pray for yourself and for those whom you care about in difficulty.




### 6.00pm Wednesday March 13th

St Andrew's Chapel,  
St John the Baptist Church, Tisbury

PLEASE NOTE WE MEET AT THE LATER SPRING HOUR!

If what we are goes beyond these walls and does some good, it is that somehow, by being here, at peace, we help the world cope with what it cannot understand. We pray because we can; we care because we must.



### SERVICES

- AAC** All Age Communion
- AAS** All Age Service
- BCP** Book of Common Prayer
- CbE** Communion by Extension
- CW** Common Worship
- E** Evensong or Evening Prayer
- FC** All Age Family Communion
- HC** Holy Communion (*saic*)
- HC02T/C** Order 2 Communion, *traditional/contemporary*
- M** Mattins or Morning Prayer
- MPr** Morning Praise

- PC** Order 1 Communion (*with hymns*)
- PC<sub>T</sub>** Order 1 Communion, *traditional language (with hymns)*
- PC02T** Order 2 Communion, *traditional language (with hymns)*
- PC02T/C** Order 2 Communion, *traditional/contemporary*
- RS** Reflective Service
- SoP** Songs of Praise
- SoW** All Age Service of the Word

### CLERGY

- AP** Andrew Poppe
- +AR** Bishop of Ramsbury
- CF** Colin Fox
- EB** Elaine Brightwell
- JA** Judy Anderson
- JMH** Juliette Hulme
- JN** Jo Naish
- KR** Katharine Rumens
- MG** Michael Goater
- MH** Mark Hayter
- PC** Patricia Clegg
- +RC** Bishop Richard Chartres

FOR A HARD COPY OF THE CHURCH SERVICES ROTA PLEASE PRINT THIS DOUBLE PAGE SPREAD ON YOUR PRINTER.

- IMPORTANT NOTE:**  
This PDF file treats each double page spread as a single page.
- 1) Set your printer to print **PAGE 20 ONLY**
  - 2) Ensure your page is set to **LANDSCAPE** orientation.
  - 3) Ensure your printing is reduced to fit your A4 sheet (**80%**). Do not print at 100%.





# 'Between a rock and a hard place'

**I** was reflecting again on the phrase 'between a rock and a hard place'. Sometimes I find myself there either as an individual or with a community of people; it is a very uncomfortable place to be in a situation where you can't see a way through. The Bible, of course is full of examples and the one that instantly comes to mind is the people of Israel who have at last been set free by God from slavery in Egypt only to find themselves trapped (Exodus 14).

The Egyptian army are in hot pursuit and the vast Red Sea is before them, what should they do now? If they turn back the Egyptians will either kill them or take them back into even more severe slavery; if they go forward, they will surely drown. What does Moses say to them? 'Stand firm and see the deliverance the Lord will bring you today' (Exodus 14: 13). I don't blame them for being terrified, forgetting that Moses was the agent of the awesome power of the God of Abraham. God's response is to gently remind them that he is with them. They had trusted him as they daubed the blood of the sacrificed lamb on their doorposts and seen how God had protected them from 'the angel of death'. Now he calls them to trust him again. Then he tells Moses to place his staff in the ground and amazingly the



sea parts – providing a safe place for those who trusted in God to cross, but those who pursued them to try to kill them perished.

There are parallels here with the events of Holy Week: Good Friday and Easter Saturday must have felt much like a 'rock and a hard place' for the followers of

Jesus. They were most likely in deep trauma having witnessed the arrest, flogging and crucifixion of their friend, rabbi and Messiah. They stayed in Jerusalem, but what were they to do next? Then, slowly, on

the day of the Resurrection the light began to dawn in their hearts and the true genius of God's plan was revealed. Jesus was raised to life again, winning triumph over death for all who truly repent and believe in him. Since that time, many lives have been transformed by this good news and many have found their way beyond the 'rock and the hard place' to a place of peace, joy and hope for the future. If this resonates with you, why not come along to any of our churches and hear more about God's unconditional love and saving power?

Your friend and minister — Denise



Barford St Martin



Burcombe



## TEA and CHATS

We shall have tea, cake and chat with friends from our villages.

**Our speaker will be Mark Murphy who lives in Burcombe. His talk is 'BBC Independence and how to watch TV in 2024'.**



Sounds intriguing, so come and find out more. There is no charge. Any donations go to the church for the use of the warm place.

**Tuesday 12 March 2.00–4.00pm**  
**St Martins Church, Barford St Martin**

**ALL ARE WELCOME**

**jennybarford@gmail.com**



# Get your business noticed in Village Buzz

**ADVERTISE WITH US FOR 6 MONTHS** — Half page – £60 | Whole page – £120 | Double page spread – £180  
**ADVERTISE WITH US FOR A WHOLE YEAR** — Half page – £100 | Whole page – £200 | Double page spread – £300



Compton Chamberlayne

## Village Hall for hire

Our village hall is available to hire for celebrations, presentations, exercise or whatever else you have in mind. Bunting is always included!

Contact Sara Willan  
 sarawillan@gmail.com



## Dear dog walkers and dog owners.

A tiny selfish minority are giving dog owners a bad name. Please ensure that our village lanes and paths are kept clean for everybody to enjoy safely!



oops...

please don't leave it!

put the bag over your hand

pick it up

and dispose of responsibly!

**SUDOKU solution**  
 March 24  
 from page 36

8	6	7	9	2	1	3	4	5
2	4	1	7	5	3	8	9	6
9	3	5	6	8	4	2	1	7
7	1	4	2	3	9	5	6	8
6	8	9	5	1	7	4	3	2
5	2	3	4	6	8	1	7	9
1	9	6	8	4	2	7	5	3
4	7	8	3	9	5	6	2	1
3	5	2	1	7	6	9	8	4

**CROSSWORD Solution**  
 March 24  
 from page 37

C	A	L	A	B	R	I	A	M	E	O	L	E
T	N	I	N	A	L	E	A	L	E			
G	O	P	A	R	C	E	N	E	R	A	N	K
M	L	H	U	D	N	E						
O	E	G	A	I	N	S	B	O	R	O	U	G
J	E	T	S	E	M	N						
D	I	B	R	R	O	S						
S	I	N	C	L	A	I	R	L	O	V	E	
P	S	T	I	V	F	A						
Q	U	E	N	T	I	N	L	A	K	E		
S	O	N	I	N	O	L						
A	R	A	N		G	O	L	D	D	A	G	G
E	E	E	L	A	L	O						
E	X	E	T	E	R	S	E	L	D	O	R	N

**WOULD YOU LIKE TO ADVERTISE WITH US BUT HAVE NO ARTWORK?**

**We will design and produce your ad for FREE\***  
 \* Minimum order, half page for 6 months.

[jan@villagebuzz.online](mailto:jan@villagebuzz.online)

**Contact details:**  
**Editor:** Gill Fisk | [gill@villagebuzz.online](mailto:gill@villagebuzz.online)  
**Design & Advertising:**  
 Jan Kalinowski | [jan@villagebuzz.online](mailto:jan@villagebuzz.online)  
 mobile: 07881 288027

Advertising and article submission deadline



### Thursday 21 March

If you plan to submit ready-made advertising please ensure that the file is in the format of either a high resolution Acrobat PDF file or a high resolution JPEG (300ppi) file – thank you.



# VILLAGE BUZZ

A MONTHLY ONLINE MAGAZINE FOR VILLAGES NESTLING IN AND AROUND THE NADDER VALLEY

MARCH 2024

## USEFUL INFORMATION

### **SALISBURY HOUSEHOLD RECYCLING CENTRE**

**SUMMER (1 April - 31 October)**  
9.00am - 4.00pm  
**CLOSED ON THURSDAYS**

**WINTER (1 November to 31 March)**  
10.00am - 4.00pm  
**CLOSED ON THURSDAYS & FRIDAYS**  
Stephenson Road,  
Churchfields Industrial Estate SP2 7NP  
Tel: 01722 322309

### **MEDICAL**

#### **SPRING ORCHARD SURGERY**

Telephone: 01722 714789  
Spring Orchard Surgery, High Street, Fovant,  
Salisbury, Wiltshire, SP3 5JL

#### **OLD ORCHARD SURGERY**

Telephone: 01722 744775  
Old Orchard Surgery, South Street, Wilton,  
Salisbury, SP2 0JU

#### **SALISBURY DISTRICT HOSPITAL**

Odstock Rd, Salisbury SP2 8BJ  
Tel: 01722 336262

#### **NICHOLSON AND BOUGH CHARITY FOR BARFORD ST MARTIN RESIDENTS**

**Telephone: 01722 744546**  
or write in strict confidence to:  
Clerk to the Trustees, 2 The Poplars,  
Barford St Martin, SP3 4AR

### **THEATRES/ART**

#### **Salisbury Playhouse**

Malthouse Lane, Salisbury SP2 7RA  
Tel: 01722 320333

#### **Salisbury City Hall**

Malthouse Lane, Salisbury SP2 7TU  
Tel: 01722 434434

#### **Salisbury Arts Centre**

Bedwin St, Salisbury SP1 3UT  
Tel: 01722 321744

#### **Odeon Cinema Salisbury**

New Canal, Salisbury SP1 2AA  
Tel: 0333 014 4501

### **WILTSHIRE COUNCIL**

#### **HEAD OFFICE**

Bythesea Road, Trowbridge, Wiltshire BA14  
8JN

#### **BOURNE HILL**

Salisbury, Wiltshire, SP1 3UZ  
Council offices are open Monday to Friday  
from 8.30am until 5.30pm

#### **WILTSHIRE COUNCIL SERVICES**

##### **Worried about a child?**

If you believe a child or young person is at risk of significant harm, neglect or injury, report your concerns to the Multi-Agency Safeguarding Hub (MASH) on 0300 4560108.

##### **Adult Care**

Tel: 0300 456 0111  
adviceandcontact@wiltshire.gov.uk

##### **Benefits**

Tel: 0300 456 0110  
benefits@wiltshire.gov.uk

##### **Blue Badges**

Tel: 01225 713002  
bluebadge@wiltshire.gov.uk

##### **Building Control**

Tel: 0300 456 0113  
buildingcontrol@wiltshire.gov.uk

##### **CHILDREN'S SERVICES**

###### **Early Help**

Tel: 01225 718230

###### **Children's Services**

Special Educational Needs and Disability (SEND)  
Tel: 01225 757985

###### **Children's Services Social Care**

Tel: 01722 438165

##### **COMMUNICATIONS**

(press and media related enquiries)  
Tel: 01225 713115 or 01225 713370  
communications@wiltshire.gov.uk

##### **Corporate Investigation Team**

01249 706456  
investigations@wiltshire.gov.uk

##### **Council Tax**

Tel: 0300 456 0109  
counciltax@wiltshire.gov.uk

##### **Elections**

Tel: 0300 456 0112  
elections@wiltshire.gov.uk

##### **Early Years and Childcare**

Tel: 0300 003 4561  
earlyyears@wiltshire.gov.uk

##### **Fraud Hotline (24 hours)**

Tel: 01249 706456

##### **Highways**

Tel: 0300 456 0105 or to report non-urgent highway defects.

##### **Homes4Wiltshire (housing register)**

Tel: 0300 456 0104  
homes4wiltshire@wiltshire.gov.uk  
Housing Options/Homelessness homeless@wiltshire.gov.uk  
Tel: 01722 434233

##### **Parking**

Tel: 01249 706131  
parking@wiltshire.gov.uk

##### **Pest Control, Noise and Pollution, Environmental Health**

Tel: 0300 456 0107  
customerservices@wiltshire.gov.uk

##### **Planning**

Tel: 0300 456 0114  
developmentmanagement@wiltshire.gov.uk

##### **Rubbish and Recycling**

Tel: 0300 456 0102  
customerservices@wiltshire.gov.uk

##### **Schools Admissions**

Tel: 01225 713010  
admissions@wiltshire.gov.uk

##### **School Transport**

Tel: 01225 712852  
educationtransport@wiltshire.gov.uk

##### **Can't find the service you require?**

##### **Contact Customer Services**

Tel: 0300 456 0100



CLICK or TAP to go back  
to the CONTENTS PAGE