

# VILLAGE BUZZ



A MONTHLY ONLINE MAGAZINE FOR VILLAGES NESTLING IN AND AROUND THE NADDER VALLEY

**FEBRUARY 2024**

BARFORD ST MARTIN, BAVERSTOCK, BURCOMBE, CHICKSGROVE, COMPTON CHAMBERLAYNE, DINTON,  
FOVANT, SUTTON MANDEVILLE, SUTTON ROW, TEFFONT EVIAS, TEFFONT MAGNA, UGFORD



**Welcome to our love  
inspired February  
edition**



**This is a PDF file with INTERACTIVITY.**  
Simply **CLICK** or **TAP** any email, web address or page link.



We combine traditional building skills, passed down through generations, with modern day techniques and materials to fulfil your lifestyle aspirations.

That's why we make great buildings that stand the test of time. Buildings made for living. A place that people call home. Not just for now, but for generations to come.

**MOULDING**

THE COUNTRY HOUSE BUILDERS

01722 742228 | [thecountryhousebuilders.co.uk](http://thecountryhousebuilders.co.uk)



## Contents page

Just **click** or **tap** on any of the panels below to take you to the relevant page.



Species of the month  
**Raven**  
Peter Thompson  
**page 4**



Who was St Valentine?  
**page 28**



Poetry:  
**She walks in beauty**  
Lord Byron  
**page 14**



December's Brain Gym  
**page 30**



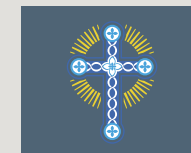
**Love at first bite**  
Bard of Compton  
Chamberlayne  
**page 16**



One of my favourite recipes  
**page 32**



News from our villages  
**page 24**



Nadder Valley Benefice  
**Church Services**  
**page 34**

**Dear Reader:** Do you have an interesting article inside you or a funny tale or memorable experience hidden away? A special poem, a fascinating family history or a passionate interest that you'd like to talk about? Please let us have it and we will create some beautiful pages on your topic for you, and everybody else to read and enjoy.

Please email me at: our NEW email address

[jan@villagebuzz.online](mailto:jan@villagebuzz.online)



Species of the month

# Ravens

Peter Thompson, Barford St. Martin

**THE RAVEN is one of the first birds to get the breeding season underway, building its large nest made of twigs and lined with moss and sheep’s wool in January and laying eggs in February. In the traditional upland strongholds of Scotland, the Lake District and Wales the nest is usually placed on an inaccessible rock face; however, in the last few years ravens have spread**

**right across England using large trees, especially conifers, and electricity pylons as nest sites.**

This recent easterly spread is probably due to the enlightened views of the modern gamekeeper, who now tolerates this big black member of the crow family – it is also now a protected species.

It might appear to be a strange time of year to start a family, but in the past the countryside would have been scattered with carcasses of stock that had succumbed to the rigours of winter, thus providing the carrion-eating raven with a plentiful food supply. By the time the young

hatch out, lambing will be underway with its accompanying afterbirth – a great favourite of ravens and their chicks! Occasionally Ravens will pick on a sickly or newly born lamb, which understandably makes them unpopular with farmers.

As well as being disliked by sheep farmers, ravens also carry a lot of mythical baggage. It has a harsh call and frequents lonely, bleak

places and is often found in association with death, resulting in it being labelled a bird of ill-omen and leading to the collective noun an ‘unkindness’ of Ravens.

The best known ravens in this country are, of course, those at the Tower of London. Legend has it that King Charles II ordered their destruction

only to reverse his decision when told that if the ravens left the Tower, not only would the tower collapse and the monarchy be terminated, but also a great disaster would befall the whole kingdom. It was therefore agreed that at least six ravens should be kept →



CLICK or TAP to go back to the CONTENTS PAGE

at all times in the Tower, and a dedicated 'Raven Master' picked from one of the Beefeaters, would care for their wellbeing. This of course, is still the case today. Some of these 'pampered' ravens can live to a ripe old age, with the oldest one, who went by the name of Jim Crow, living for 44 years. Ravens are big – by far our biggest member of the crow family. An average adult is around 63 centimetres (25 inches) in length and 1.47 kilograms (3.2 pounds) in mass. The brain of the raven is among the largest of any bird species and captive ravens can easily be taught to say words and do tricks. They often roost together at night during the winter months, but usually forage alone during the day. However, when one discovers a large carcass, it will return to the roost and communicate the find. At first light on the following morning, the flock of ravens will fly

off directly to feast on the carcass, benefiting the whole group. Wiltshire now has lots of ravens, so keep an eye open for them in flight as they are great acrobats in the sky. They surf updrafts, fly upside down and even turn somersaults – just because they can. Young ravens have been seen playing a fun game of catch, by dropping sticks while in flight and then quickly swooping to catch them before they hit the ground. — **PT**

Peter Thompson lives in Barford St. Martin and has worked in conservation and farming all his life. He is Chair of the Salisbury & District Natural History Society and would be delighted if readers joined either the society's Facebook page or the society itself – or indeed both! If you are interested, please see details on the right.



## Do you need help caring for your feet?

**Foot Health Practitioner**  
**Nicky Telling** DipCFHP MPSPract

**Offers Treatments:**  
 Nails Cut and Filed  
 Callus, Corns & Verrucas  
 Thickened and Fungal Nails  
 Diabetic Foot Care

**Book Now** 01722 742123  
 mobile 07369 210800

**No 31 Hair and Beauty**  
 Silver Street, Wilton

## SALISBURY & DISTRICT NATURAL HISTORY SOCIETY



### REGULAR FIELD MEETINGS & INDOOR TALKS

Founded in 1952, the society studies and records the natural history of Salisbury and the surrounding area. No expertise is needed to join us! Everyone with an interest in nature and the countryside is welcome.

**Annual subscription is only £10**  
**Family membership – £15**  
**Junior membership – Free**

So, if you would like to find out more about the wildlife in your local area, and meet friendly, like-minded people, go to:

[www.salisburynaturalhistory.com](http://www.salisburynaturalhistory.com)

  
[www.facebook.com/groups/salisburynaturalhistorysociety](https://www.facebook.com/groups/salisburynaturalhistorysociety)



# Lawn care to the highest possible standards

Get an INSTANT, no obligation quote by using our online lawn measuring tool in 3 easy steps:

[GET INSTANT QUOTE](#)

- 1 Enter your postcode
- 2 Outline your lawn
- 3 Submit your details



## What makes Lawntech stand out from the crowd?

-  A track record of over 30 years experience, delivering consistent professionalism
-  Highly qualified and accomplished technicians with over 130 years of combined experience
-  Offering a sustainable approach to lawn care, using semi organic fertilisers. Fully organic treatment programme available

**FREEPHONE 08000 665 465**

Free to call - landlines and mobiles

[info@lawn-tech.co.uk](mailto:info@lawn-tech.co.uk)

[www.lawn-tech.co.uk](http://www.lawn-tech.co.uk)



**Lawntech™**



CLICK or TAP to go back to the CONTENTS PAGE



## Boiler Servicing & Maintenance

BREAKDOWNS | REPAIRS | OIL | GAS | LPG

Mark Benfield

01747 828689 or 07974 249287

[mark@mabheatingservices.co.uk](mailto:mark@mabheatingservices.co.uk)

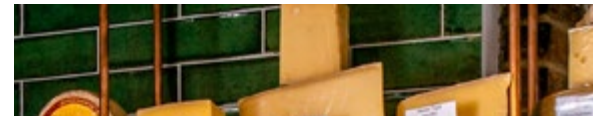
## Join our Heating Oil BUYING CLUB!

and SAVE up to 10% on your heating oil cost!

- FREE TO JOIN
- Independent of suppliers
- Order for more than one location
- Pay the supplier direct
- Local suppliers and depots
- Fortnightly reminders and opportunities to place orders
- Monthly budget scheme available
- Over 1200 members buying 1.5 million litres annually!

FOR MORE INFORMATION & FREE REGISTRATION

[www.nadder.oilbuyingclub.com](http://www.nadder.oilbuyingclub.com)



## COMPTON MCRAE

KITCHEN | LARDER | CAFÉ  
CHEESE | WINE | SEMLEY



01747 448750

[info@comptonmcræ.com](mailto:info@comptonmcræ.com)

[www.comptonmcræ.com](http://www.comptonmcræ.com)



Monday to Friday 9am-4pm

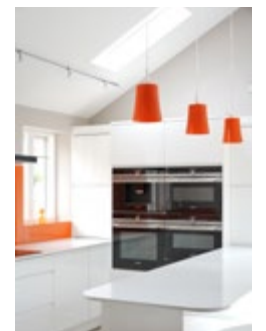
Saturday 9am-3pm

Unit 2 Chaldicott Barns, Semley SP7 9AW



Beautifully Built to Last

Award winning building contractors covering every detail of your project from concept to hand over



P.F. Parsons Ltd

Hindon | 01747 820 422 | [www.pfparsons.co.uk](http://www.pfparsons.co.uk)

[pfparsonsltd](https://www.instagram.com/pfparsonsltd)

Village Buzz has a new, easily memorable web & email address!



**villagebuzz.online**  
after all, that's where we are – *online*

[gill@villagebuzz.online](mailto:gill@villagebuzz.online) | [jan@villagebuzz.online](mailto:jan@villagebuzz.online)



February 14th is synonymous with infatuation and love. It is the perfect day for a beautiful, romantic poem. And who better to encapsulate this essence of passion than the tender poet George Gordon, otherwise known as Lord Byron?

## She Walks in Beauty

LORD BYRON (George Gordon)

She walks in beauty, like the night  
Of cloudless climes and starry skies;  
And all that's best of dark and bright  
Meet in her aspect and her eyes;  
Thus mellowed to that tender light  
Which heaven to gaudy day denies.

One shade the more, one ray the less,  
Had half impaired the nameless grace  
Which waves in every raven tress,  
Or softly lightens o'er her face;  
Where thoughts serenely sweet express,  
How pure, how dear their dwelling-place.

And on that cheek, and o'er that brow,  
So soft, so calm, yet eloquent,  
The smiles that win, the tints that glow,  
But tell of days in goodness spent,  
A mind at peace with all below,  
A heart whose love is innocent!

**George Gordon Byron**, the 6th Baron Byron FRS (1788 – 1824), held a prominent position within the Romantic movement, asserting himself as a key figure in English poetry. Recognised as one of the pre-eminent poets of his time, Byron's contributions include expansive narratives like Don Juan and Childe Harold's Pilgrimage, along with the widespread popularity of his shorter lyrics in Hebrew Melodies.

He was educated at Trinity College, Cambridge, from where he embarked on extensive travels across Europe. Italy captivated him and he spent seven-year there prompted by the need to escape threats of lynching in England. During his Italian sojourn, Byron maintained a close association with Percy Bysshe Shelley, another luminary in the world of poetry.

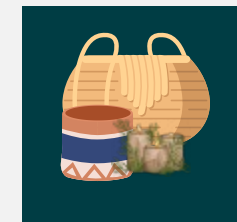
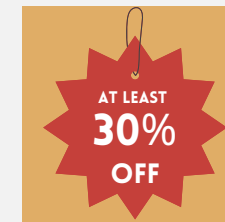
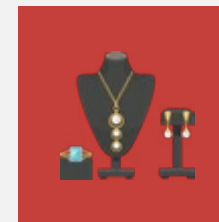
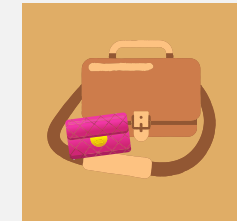
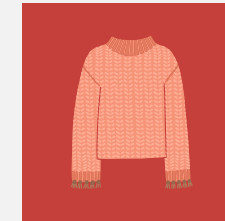
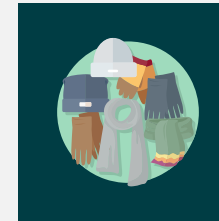
Byron's life took a dramatic turn when he actively participated in the Greek War of Independence against the Ottoman Empire. His role in the conflict elevated him to the status of a folk hero in the eyes of the Greeks.

Byron died in 1824 at the age of 36, succumbing to a fever contracted during the sieges of Missolonghi.

# SALE OF SALES

HUGE DISCOUNTS FROM QUALITY TRADERS

FRIDAY 2ND FEBRUARY 2024  
COOMBE BISSETT VILLAGE HALL, SP5 4LU  
10 - 3PM ADMISSION £4



DESIGNER JEWELLERY ★ LEATHER BAGS ★ CLOTHES  
ACCESSORIES ★ CARDS ★ EMMA BRIDGEWATER TINS  
HOMEWARE ★ FAUX FLOWERS ★ LOCAL PRODUCE  
BOTTLE STALL ★ AND MUCH MORE

CAFE SERVING DELICIOUS LUNCHES AND CAKES

ALL PROCEEDS TO BENEFIT



FOLLOW US



CLICK or TAP to go back  
to the CONTENTS PAGE



# Love at first bite — A fishy tale on the river Nadder

The Bard of Compton Chamberlayne

Ah, the river Nadder, snaking through the Wiltshire countryside like a liquid emerald on St. Valentine's Day. Birdsong floated on the breeze and even the air seemed to blush pink. All was tranquil except perhaps for one. Barnaby 'Gruff' Grumble, a man whose beard rivalled the moss on the riverbank in both age and unruliness, sat hunched over his rod, muttering like a grumpy badger denied his evening worms.

'Not a nibble, not a flicker,' Gruff grumbled, beard quivering like a windsock in a gale. 'Must be Old Man Nadder himself swallowed everything with fins.'

Suddenly, a flash of silver broke the water's surface, arching like a tiny, shimmering rainbow. Gruff's eyes, (usually as cloudy as the Wiltshire sky after a pie and mash lunch), widened like saucers. It was no ordinary trout this, but a vision: scales sparkling like fireworks in the moonlight, fins like spun silk, and eyes that could melt the frostiest February heart.

'Crikey,' Gruff breathed, his voice softer than a purring kitten. 'It's... it's Aphrodite herself, risen from the foam!'

From that moment, Gruff was smitten. He spent his days weaving daisy chains for his



'fin-tastic fair maiden,' serenading her with sea shanties that made the sheep bleat in disapproval, and even attempting (rather disastrously) to woo her with his homemade trout pâté. Aphrodite, ever the graceful lady, remained politely distant, nibbling on minnows and occasionally flicking her tail in amusement.

The other fishermen on the Nadder, a salty bunch used to Gruff's grumbles, were flabbergasted. Old Man Ted, who could tell the age of a fish by the crinkles on its scales, swore Gruff had gone 'soft in the head, like a week-old kipper.' Yet, as they watched Gruff's clumsy attempts at wooing, a strange thing happened. Their hearts, as

hard as leather boots, began to soften. They started leaving Aphrodite extra worms on their lines, humming along to Gruff's off-key shanties, and even offering (unsolicited) advice on trout courtship.

One blustery evening, as the sun dipped below the hills, painting the sky in hues of rose and lavender, Gruff sat by the river, chin resting on his gnarled hands. He had finally accepted Aphrodite's indifference and his heart was heavy as a sack of wet turnips. A tear, fat and salty, plopped into the river, disturbing the water.

And then, a true miracle happened. Aphrodite, the elusive beauty, swam towards

him, nudging his hand with her sleek snout. Gruff stared, open-mouthed, as she circled him, a silent ballet of fins and silver scales. Then, with a flick of her tail, she disappeared into the depths, leaving behind a single, perfect pearl nestled in the crook of his finger.

Gruff held the pearl, its smooth surface reflecting the fading light. It wasn't just a pearl, he realized, it was a promise. A promise of companionship, of shared moments by the river, of a love as unique and unexpected as a trout falling for a grumpy old fisherman on St. Valentine's Day.

So, the next morning, Gruff returned to the river, not with a rod, but with a picnic basket and a book of poetry (borrowed, with much grumbling, from Old Man Ted). He sat by the water, the pearl nestled in his pocket, a silent talisman of his newfound love. And as the sun warmed his face and the birdsong filled the air, he knew that even if Aphrodite never shared his affections, he would always be her devoted admirer, the fisherman who fell in love with a trout on the River Nadder, on a Valentine's Day that bloomed as pink and unexpected as a rose in winter.

And who knows, maybe, just maybe, one day, Aphrodite would return, not only for the minnows, but for the grumpy old fisherman with a heart as full of love as the River Nadder itself. ■

The concert will be in the presence of **HER MAJESTY THE QUEEN**

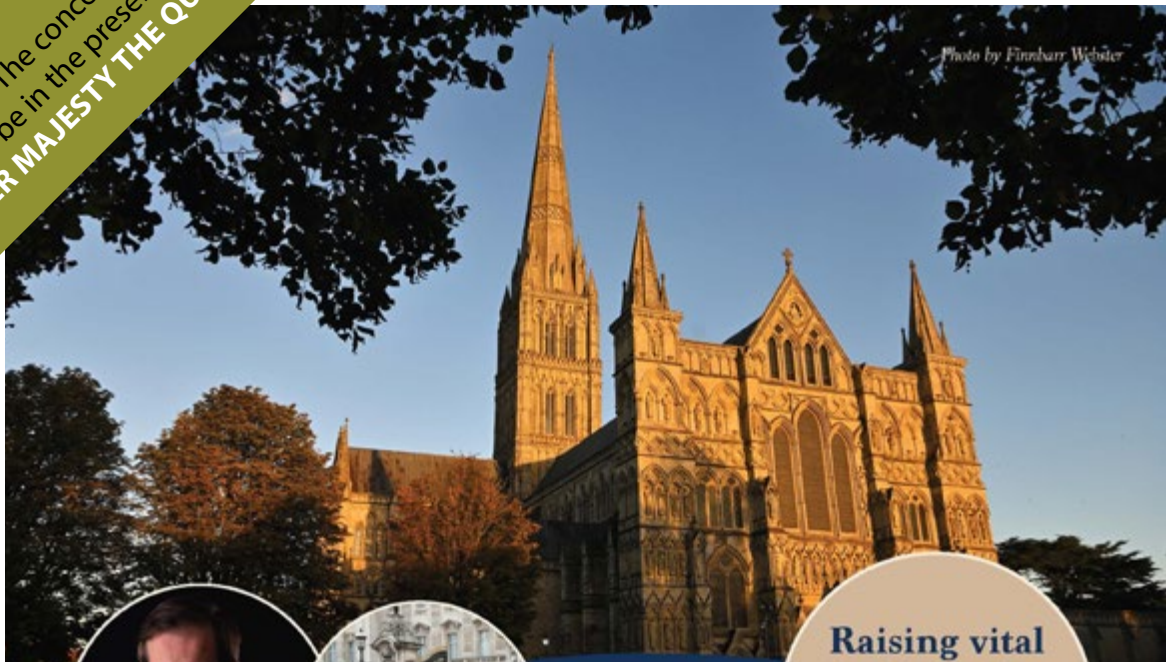


Photo by Finnvarr Webster



Raising vital funds for key Wiltshire charities

# A Unique Concert for Wiltshire

Award-winning concert pianist Rupert Egerton-Smith performs with the Band of The Grenadier Guards and the Band and Bugles of The Rifles

**Salisbury Cathedral | Thursday 8 February 2024**

Doors open at 6.15pm | 7pm start

Please note, all guests must be seated by 6.45pm for security reasons

Book online: [tinyurl.com/UniqueWiltshire](https://tinyurl.com/UniqueWiltshire) or scan the QR code on the right

Tickets priced from £15



All profits from this event will go towards key Wiltshire charities, with a donation to the Regiments involved.



## A Unique Concert for Wiltshire will be held at the historic Salisbury Cathedral on **Thursday 8 February 2024** to raise vital funds for key Wiltshire charities.

The event will see award-winning concert pianist Rupert Egerton-Smith as special guest artist, in performance with The Band of The Grenadier Guards and The Band and Bugles of The Rifles.

The Band of The Grenadier Guards represent the most senior infantry regiment of the British Army, while the Band and Bugles of The Rifles represent the largest sole rifle regiment in the British Army.

This event not only marks one of the rare occasions that the two Bands will perform together in a concert, but it is also Egerton-Smith's debut performance alongside them, just prior to the start of his East Coast recital tour of the United States of America.

The concert itself will take the audience on an exciting and unique musical journey; celebrating the rich histories of the two regiments, as well as paying homage to the local Wiltshire area.

All profits from this wonderful evening will go towards supporting the work of The Wiltshire Bobby Van Trust, Wiltshire Air Ambulance and Youth Action Wiltshire, along with the military charities, all of whom are honoured to share a close association with Her Majesty The Queen.

The Unique Concert is being held in Salisbury Cathedral, famous for its iconic spire, which is the tallest in the country, and home to one of four remaining copies of the 1215 Magna Carta. The Cathedral has close ties with The Rifles; the Royal Berkshire and Wiltshire Regimental Museum is sited in the Cathedral Close and their colours are laid up in the north west nave aisle.

Mr Egerton-Smith said: 'As a musician it is truly a rare and wonderful privilege to be a part of an event which is so clearly historic by its very nature, and also having the opportunity to perform in such a famous cathedral.

In addition, being asked to perform with bands that are intrinsically connected to key parts of English history is similarly a distinction of the highest kind, and one for which I am extremely grateful.'

Wiltshire Air Ambulance deputy chief executive Barbara Gray said: 'It promises to be a fantastic event in the stunning setting of Salisbury Cathedral, all aimed at raising vital funds and awareness for our charity, The Wiltshire Bobby Van Trust and Youth Action Wiltshire.'

Jennie Shaw, director of The Wiltshire Bobby Van Trust, said: 'I am so proud of the difference these three charities make to the wellbeing of our county. I am confident the music we will hear will make for a truly memorable evening in the historic Salisbury Cathedral. Your support will enable us to continue this important work and for that we are all extremely grateful.'

Youth Action Wiltshire Community First chief executive Lynn Gibson said: 'Community First is delighted to be represented as a charity partner alongside The Wiltshire Bobby Van Trust and Wiltshire Air Ambulance. Through our youth work arm, Youth Action Wiltshire, we are committed to supporting some of the most vulnerable young people in the county at a time of increased demand for complex support, including mental health and financial challenges for the young people and families we work with. We hope that you will join us at this very special event and your support is much appreciated.'

The Very Revd Nicholas Papadopoulos, Dean of Salisbury, said: 'We are delighted to be the venue for what promises to be a marvellous evening of music, in support of three remarkable local charities that contribute so much to Wiltshire and its communities, in particularly young people.'

**Tickets go on sale from Monday 20 November 2023 at 10am, with prices starting from £15. Seats can be booked online from <https://tinyurl.com/uniquewiltshire> or by calling the Salisbury Cathedral box office on 01722 555128.**

A limited number of wheelchair/accessibility tickets are available for this event, which can be secured directly from the box office.

**The Wiltshire Bobby Van Trust** was established in 1998 to work in partnership with Wiltshire Police to provide a home security service. The mission of the charity is to help elderly or vulnerable people who have been victims of, or are considered to be at risk of, house crime, hate crime, domestic abuse or fire. The charity also works with Dorset & Wiltshire Fire & Rescue Service, as well as several other agencies, to ensure that the most effective use is made of facilities and support available and those in need of help receive it promptly. The charity launched Stay Safe Online in 2016 to support older people to recognise computer fraud and what to do if they have been scammed. Seven volunteers across the county offer one-to-one home visits to provide advice on how to stay safe online.

**Wiltshire Air Ambulance** provides Helicopter Emergency Medical Services across Wiltshire, Bath and surrounding areas. The charity has been saving lives since 1990, operating up to 19 hours a day, 365 days a year. The aircrew, consisting of pilots, critical care paramedics and doctors, attend on average three potentially lifesaving missions each day in the charity's Bell 429 helicopter or one of two critical care cars. The charity needs to raise £4m each year to continue saving lives and receives no regular direct Government funding or National Lottery grants.

**Youth Action Wiltshire**, based in Devizes, is an award-winning charity and a 'Youth Arm' of Community First, which has supported people and places across Wiltshire and Swindon for over 50 years. They champion community causes and manage multi-million pound projects, supporting vibrant communities and brighter futures for local people. All their programmes and services aim to meet our objectives: connecting communities, tackling disadvantage, encouraging enterprise and inspiring ideas through innovation.

**Rupert Egerton-Smith** is an award-winning pianist and concert artist who continues to be praised for the "rich sensitivity and superb musicianship" that has become synonymous with his performances. Combining an innate musicality with solid grounding in technique, style and composition, his abilities continue to trademark him as one of the finest classical pianists on the musical scene.

**The Band of the Grenadier Guards** is one of the oldest and most iconic military bands in the world. It has a vast and illustrious history dating back over 335 years, having been formed under the reign King Charles II as part of the 'First Regiment of Foot Guards'. The band is present at all major UK royal occasions and has witnessed many of the nation's significant historic events. In recent times, they have played pivotal roles in the State Funeral of Her Late Majesty Queen Elizabeth II and the Coronation of His Majesty King Charles III. The Regimental Quick March, 'British Grenadiers' is one of the most recognisable and memorable tunes in the world.

**The Band and Bugles of The Rifles** are renowned for their fast 'light' pace when marching. They are part of the Royal Corps of Army Music and represent the largest infantry regiment in the UK Army, The Rifles. The Band and Bugles of The Rifles have been part of significant events in the UK including the funerals of the late Duke of Edinburgh, Her Majesty Queen Elizabeth II and the Coronation of His Majesty King Charles III. They can be found regularly performing around the UK and abroad throughout the year and are based in Winchester.

# THE WILTSHIRE BOBBY VAN TRUST

Registered Charity No: 1153790



## VOLUNTEER



If you're passionate about making a difference, become a Wiltshire Bobby Van Stay Safe Online Volunteer.

**We are committed to ensuring our volunteers feel valued and recognised for everything they do.**

\* This is a role suited to someone who is reliable, has time to commit to about one day a week and wants to make a real difference, not only to the safety and security of vulnerable people, but also the feeling of security when using the internet. Online exploitation and fraud are the fastest growing area of crime, and the elderly are particularly a target.

\* Volunteers will visit and work with individuals in their own homes assessing how they use their internet and smart technology then provide advice and guidance to make them less likely to become a victim of crime and to feel safer using the internet. Volunteers can also give group talks where the volunteer will provide an input with the same goals, but to community groups and organisations. We will give up-to-date information and advice on computer and internet security.

\* The successful applicant will receive an Induction which will include an overview of WBVT including administrative procedures, DBS Check, the loan of IT equipment if required and reimbursement for travel expenses plus accompanying an existing volunteer to a one to one home visit and a group talk. The successful applicant will need to have access to a car or the means to be able to travel to different locations to carry out referrals.

**For further information contact Toni Evans  
WBVT Stay Safe Online Manager Email: [Toni@wbvt.org](mailto:Toni@wbvt.org)**



## ACCOUNTANCY SERVICES

Salisbury and the Nadder Valley

Are you a small business or individual looking for help with your accounts, VAT or self assessment tax returns?

Do you need help with Making Tax Digital? If so, get in touch!

**Sara Sawyer, MAAT**

**EVE DAY ACCOUNTANCY Ltd**

[info@eve-day.co.uk](mailto:info@eve-day.co.uk)

**07919 664160**



## TANK SERVICES



### HEATING OIL TANKS

Replacement Oil Tanks

Emergency Holding Tanks

Tank Relocation

Heating Oil Tanks

Diesel Storage Tanks

Rainwater Harvesting System

- ✓ DOMESTIC
- ✓ AGRICULTURAL
- ✓ COMMERCIAL

**Call today**

**01722 714514**



[www.tankservices.co.uk](http://www.tankservices.co.uk)





# COMPTON SMITH INTERIORS



## COMPTON SMITH INTERIORS



[www.comptonsmith.co.uk](http://www.comptonsmith.co.uk)  
FULL INTERIOR DESIGN SERVICE

- Interior decorating consultancy.
- Bespoke curtains, blinds and upholstery.
- Suppliers of well-known specialist paints, wallpapers & fabrics:  
*Farrow & Ball, Little Greene, Pierre Frey, Colefax & Fowler, Sanderson Design Group, Lewis and Wood and many more designers.*

**Monday to Friday: 8.30am to 5.30pm**  
**Friday: 8.30 to 5.00pm**  
**Saturday: 9.30am to 1.00pm**



10d Wincombe Business Park, Shaftesbury, Dorset SP7 9QJ  
Tel: +44 (0)1747 850150 [info@comptonsmith.co.uk](mailto:info@comptonsmith.co.uk)



CLICK or TAP to go back to the CONTENTS PAGE

Teffont Magna

Teffont Evias



## Nadder Valley Gardening Club...

...is thriving and we are keen to encourage new members to join us in 2024. We have members from Barford, Chilmark, Dinton, Fovant, and Teffont; we welcome all from within the Nadder Valley area.

We have an interesting number of events taking place throughout the coming year. These include a Quiz, talks with guest speakers (which take place at 7pm in the Village Hall, Teffont), visits to local, and not so local, gardens and a social gathering.

**Membership is £10 per annum.**

Guests are welcome at £5 per person for the talks and quiz.

Entry for garden visits is additional to all. If you would like more information or an application form please contact Tina Fox:

[tinafox1811@gmail.com](mailto:tinafox1811@gmail.com)

or telephone 01722 716010



CLICK or TAP to go back to the CONTENTS PAGE



Sutton Mandeville



**MONTHLY**

**DRAW RESULTS**

**DECEMBER 2023**

All Saints Church  
Sutton Mandeville

**1st £40 — 61**

**2nd £20 — 118**

**3rd £10 — 16**



To join in please contact  
Kate Clutterbuck  
[kateclutterbuck5@gmail.com](mailto:kateclutterbuck5@gmail.com)



Fovant

Dr Kinlin's January and February  
Focus Sessions

**Thur 25 January Part 1**

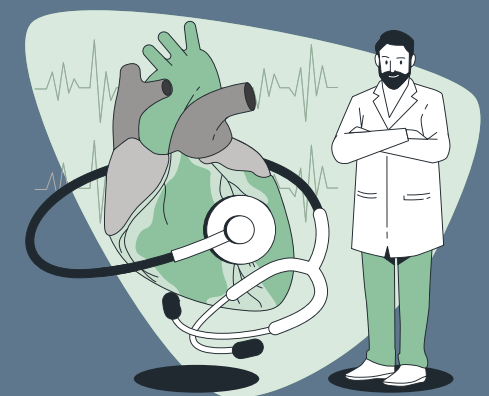
**Thur 22 February Part 2**

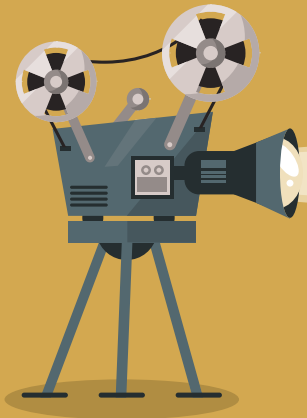
4 – 5pm Fovant Village Hall

## Heart Problems

Physical Issues Part 1

Emotional Issues Part 2





# Moviola Cinema

## Bishopstone

Moviola film nights are held in Bishopstone Village Hall SP5 4AA, usually on the last Friday of the month, at 7.30pm. Doors open at 7.00pm when a bar and snacks are available. Bookings should be made with Caroline either by phone 01722 781044 or email: [bvhticketoffice@btinternet.com](mailto:bvhticketoffice@btinternet.com) — Entry is £6, paid on the door by cash, card or cheque.

### Scrapper <sup>(12a)</sup> 23 February 2024



12-year-old Georgie (Lola Campbell), lives alone in a London flat. Her mother has just died. Grieving and left to her own devices, she doesn't attend school. In fact, she and her friend Ali (Alin Uzun) spend their days pilfering bikes to sell on the side, and ingeniously fending off social services. Then one day her ne'er-do-well father Jason (Harris Dickinson) suddenly appears, having heard of her mother's death. But there's a good reason why Jason has been MIA: he never grew up. And so the prospect of fatherhood scares him, but for Georgie's sake, he makes a bid to reconnect with his daughter.



MOVIOLA LTD EXISTS TO PROVIDE A RANGE OF HIGH QUALITY CINEMA-RELATED EVENTS FOR PEOPLE LIVING IN RURAL PARTS OF THE UK, WITH THE AIM OF REDRESSING THE IMBALANCE BETWEEN TOWN AND COUNTRYSIDE IN ARTS AVAILABILITY AND PARTICIPATION.

### The Great Escaper <sup>(12a)</sup> 15 March 2024



A film that is quite emotional as a D-Day veteran 'escapes' the confines (not in a jailbreak sense) of his care home to attend the 70th anniversary in France, causing a media frenzy in the process! Michael Caine and the late Glenda Jackson give wonderful performances as the elderly couple in the care home, Caine playing Bernie the veteran in question and Jackson, Rene his devoted wife who covers up for him as much as possible and encourages him to follow his destiny. I am used to seeing the two actors in their pomp in sixties and seventies films so this is quite a change.

### Napoleon <sup>(15)</sup> 26 April 2024



Napoleon is a spectacle-filled action epic that details the chequered rise and fall of the iconic French Emperor Napoleon Bonaparte, played by Oscar®-winner Joaquin Phoenix. Against a stunning backdrop of large-scale filmmaking orchestrated by legendary director Ridley Scott, the film captures Bonaparte's relentless journey to power through the prism of his addictive, volatile relationship with his one true love, Josephine, showcasing his visionary military and political tactics against some of the most dynamic practical battle sequences ever filmed

## Who were the Roman Emperors?



**Emperor Claudius Gothicus**, though his reign spanned a mere two years (268-270 AD), carved his name into Roman history with the grace of a born warrior and the foresight of

a seasoned leader. He rose to the imperial purple at a time of turmoil, when barbarian tribes clawed at the empire's borders like hungry wolves.

Claudius, however, was no lamb. He met the Gothic threat head-on, leading his legions to a thunderous victory at the Battle of Naissus. The impact of this triumph echoed for nearly a century, halting the Gothic advance and earning him the honorific title 'Gothicus' – a testament to his martial prowess.

Tragically, fate had other plans. Just as Claudius was steering the empire back towards calmer waters, the insidious grip of the 'Plague of Cyprian' tightened around him and he succumbed to the illness in 270 AD, leaving the unfinished task of restoration to his successor, Aurelian.



**Emperor Aurelian**, a soldier-emperor who ruled Rome from 270 to 275 AD, was a force to be reckoned with. He rose through the ranks of the military, eventually becoming

emperor during a time of crisis. The Roman Empire was fractured and plagued by barbarian invasions and internal strife.

Aurelian, however, was determined to restore Rome's glory. He launched successful campaigns against barbarian tribes, pushing back the Alamanni and Goths. He also reunited the empire, defeating the Palmyrene Empire in the East and re-integrating Gaul into Roman control.

Despite his achievements, Aurelian's reign was cut short. He was assassinated in 275 AD, possibly by his own advisors. Nonetheless, his legacy lived on and he is often considered one of Rome's greatest emperors, a man who saved the empire from the brink of collapse.

# Well, who was St Valentine?

**There are actually two main contenders for the title of 'Saint Valentine,' both of whom were martyred in Rome around the year 270 AD during the reign of Emperor Claudius II Gothicus:**



**Valentine of Rome:** A Presbyter in Rome, Valentine drew the ire of Emperor Claudius by ignoring the Imperial ban forbidding men who had not fulfilled their military obligations to the Empire to marry. Remaining loyal to his moral commitment and beliefs as a Christian priest,

Valentine refused to compromise the sanctity of marriage to the will of the state. In defiance of Imperial edict, Valentine continued to unite and bless Christian couples, who were legally barred from marrying. Around the year 270 AD Emperor Claudius II (Gothicus) sentenced him to death for this, and for not sacrificing to the pagan gods. According to legend, he was imprisoned and then executed on February 14th. Many miracles happened throughout his trials, and many more were attributed to the Saint in his life and after. The icon above is a reminder of the true love this heroic Saint had for Christ; he was willing to risk all for the love of God.



**Valentine of Terni:** This Valentine was the first bishop of Terni, a city in Umbria and the green heart of Italy, founded by Romans in the year 7 BC.

Here, of course, he is celebrated throughout the whole month of February! Because of his faith he was persecuted under the emperor Aurelian and beheaded in Rome on the 14th of February (around 273 AD). His body was taken to Terni and buried there. His relics are kept in the Basilica, in a silver statue in a crystal cabinet with a sign: 'Saint Valentine patron of love.'

Every year, in the church dedicated to Saint Valentine of Terni, hundreds of couples gather for the Celebration of the Promise (*Festa della Promessa*) to promise each other love before getting married. Excavations carried out in the 17th century under

the Basilica as well as historical sources revealed the existence of this saint.

In 1605, the municipality financed the research work and under the vision of a special commission, the archaeological excavations began. Under the main altar, at a depth of five feet (152 cm), a marble ark was found, rustic on the outside and inside carved in relief with a cross the size of an arm. This contained a lead box which when the lid was

removed, the five-foot-long body of San Valentino was revealed, with its marble inscription on it.

Almost all the main bones of his Sacred Body

were recognised; only the skull, which had been separated from the body, was not totally whole. In an atmosphere of joy and emotion 'the relics were enclosed in a red-lined cypress urn which was sealed and then covered with a gold-embroidered cloth'.

Even today, inside the Basilica of Saint Valentine in Terni, it is possible to visit the urn of the Saint, placed under the main altar of the Basilica at the end of the 1700s.

The life of Terni has become intertwined with the continued devotion for Saint Valentine. Professor Pietro Borzomati explains how citizens live the feast of the city's patron saint.

'It is the only day of the year in which the inhabitants of Terni live a profoundly different life. The activity, noise and haste of daily life all give way to a day of silence, serenity and reflection – a calm oasis in the frenzy of our 21st Century lives. ■

## Why is Saint Valentine the patron saint of lovers?

There are several legends about this. Apparently, saint Valentine loved roses and used to give them to young couples of fiancées to wish them a happy union. As the story goes, Valentine one day heard a couple fighting, he gave them a rose and spoke to them helping them to reconcile. After that, there was a procession and people wanted his blessing for new families. Since Valentine was busy also with other things, he established the 14th day of every month for this blessing. It has remained the 14th of February, the day of his death.

## Evidence

Because of the lack of clear historical evidence, the Catholic Church removed Saint Valentine from the official list of saints in 1969. However, he is still venerated by some Christians, and his feast day, February 14th, is still celebrated as Valentine's Day, a day of love and romance.

It's important to note that the romantic traditions associated with Valentine's Day most likely developed much later, in the Middle Ages and beyond, and are not directly connected to either of the historical Saint Valentines.



CLICK or TAP to go back to the CONTENTS PAGE

	6	3		8				
		9						
			9		4			
			4	2	3			5
	5		1					2
		6		5			8	
							2	
	1		3					8
2		8			7	9	1	

1		2		3		4		5		6		7		8
9						10								
11								12						
13								14			15			
										16				
17						18								19
					20									
21						22		23						
24										25				
26						27								



**TO COMPLETE THESE PUZZLES PLEASE PRINT THIS DOUBLE PAGE SPREAD ON YOUR PRINTER.**

**WHEN USING YOUR PRINTER:**  
 Ensure your page is set to **LANDSCAPE** mode.  
 This PDF file treats each double page spread as one single page.  
**SO TO PRINT THIS SPREAD SET YOUR PRINTER TO PRINT PAGE 16 ONLY.**

**DO NOT PRINT AT ACTUAL SIZE BUT ENSURE THE PRINT IS REDUCED TO FIT THE SHEET.**



CLICK or TAP to go back to the CONTENTS PAGE

**HOW TO PLAY SUDOKU**

The objective of the puzzle is to complete the grid so each of the rows, columns and 3 x 3 sub-grids contains the numbers 1 to 9. The challenging part of the puzzle is that each number can only appear once per row, column, or sub-grid.

**SOLUTION PAGE 39**



**February's Brain Gym**

**Across**

- An arm of the Mediterranean between northwest Italy and Corsica (8,3)
- A triangular sail stretched in front of the foremast in a ship (3)
- Pungent, biting, caustic (5)
- Novel first published in 1847, written under the pen name of Acton Bell (5,4)
- Suburb of Stoke-on-Trent, named after the Classical region, the site of Josiah Wedgwood's residential Hall (7)
- Great \_\_\_\_, iron steamship designed by Brunel, the largest ship ever built when launched in 1858 (7)
- Geological period between the Cambrian and Silurian eras (10)
- Island in the Inner Hebrides of Scotland, whose largest settlement is Portree (4)
- Alexander \_\_\_\_, English author who wrote Ode on Solitude when aged twelve (4)
- Garden plant of the buttercup family, with tall showy spikes of blue flowers (10)
- Amelia \_\_\_\_, the first woman to fly solo non-stop across the Atlantic Ocean (7)
- The coffee bean produced from the shrub Coffea canephora, grown especially in East Africa (7)
- Canadian musician who recorded the 1970 album After the Gold Rush (4,5)
- Mary \_\_\_\_, historian who wrote the book Laughter in Ancient Rome: On Joking, Tickling, and Cracking Up (5)
- Large horned antelope with a tufted tail, also called the wildebeest (3)
- A white Rhine wine produced near Mainz, Germany (11)

**Down**

- A cattle-herder or cowboy in the steppes of western Venezuela and eastern Colombia (7)
- Actor who played the title role in the 1990 film Cyrano de Bergerac (6,9)
- Steve \_\_\_\_, the Sports Personality of the Year in 2000 (8)
- A hurtling mass of snow, with ice and rock, descending a mountainside (9)
- John Millington \_\_\_\_, Irish writer who wrote the play The Playboy of the Western World, first performed in 1907 (5)
- Italian town where St Francis founded the Franciscan religious order in 1209 (6)
- Striker for Tottenham Hotspur in the 1990s who later managed Germany's national football team (6,9)
- \_\_\_\_ Knowles, former member of the girl group Destiny's Child, who married rapper Jay-Z in 2008 (7)
- Plant with thin green edible shoots, whose first pickings are known as sprue (9)
- African country whose largest natural reserve is Hwange National Park (8)
- Obsolete monetary unit of Germany, worth one-hundredth of a mark (7)
- An intricate decorative fret pattern, especially in ancient Greek architecture (7)
- A tropical Indian fig tree with vast rooting branches (6)
- A brownish-grey colour, the French word for 'mole' (5)

**SOLUTION PAGE 39**



CLICK or TAP to go to SOLUTIONS



# One of my favourite recipes

Compton Chamberlayne

## It's HOT SOUP time! — Sweet Potato Soup



**Cooking time: 30 minutes**  
**Serves 4**

**On a cold winter night, warm up with this creamy sweet potato soup! It's healthy, comforting, with a delicious sweet and smoky flavour. Vegan and gluten-free.**

### Ingredients

- 2 tablespoons extra-virgin olive oil
- 1 medium onion, chopped
- 1 heaped teaspoon sea salt
- Freshly ground black pepper
- 3 medium sweet potatoes (1½ pounds), peeled and cubed
- 1 apple, peeled and chopped
- 3 garlic cloves, grated
- 1 teaspoon grated fresh ginger
- 1 teaspoon coriander
- ½ teaspoon smoked paprika



- 1 teaspoon apple cider vinegar
- One litre of vegetable stock\* or stock cubes
- 400g can of coconut milk, reserve 50ml for garnish

### Serving options

- Pumpkin seeds, fresh coriander and cayenne pepper for garnishing
- Crusty bread for serving.

### Method

1. Heat the oil in a large saucepan over medium heat.
2. Add the onion, salt, and several grinds of fresh pepper and sauté until soft, 5 to 8 minutes.
3. Add the sweet potatoes and the apple and cook until they begin to soften, stirring occasionally, about 8 to 10 minutes.
4. Add the garlic, ginger, coriander and smoked paprika and stir. Stir in the apple cider vinegar and then 750ml of stock and the coconut milk. Bring to a boil, cover and reduce the heat to a simmer.
5. Cook until the potatoes are tender, 20 to 30 minutes.
6. Cool a little then pour the soup into a blender, working in batches if necessary, and blend until smooth. If your soup is too thick, add up to 250ml more stock and stir.
7. To serve, season to taste and top with a swirl of coconut milk, pumpkin seeds, coriander, and cayenne pepper, if desired. Serve with crusty bread.

*This soup thickens as it cools. So if reheating it, stir in a little water to create a smooth, creamy consistency.*

### \*Homemade vegetable stock

**Use onions, garlic, carrots, celery, and herbs like thyme and parsley.**

Whether you're using whole vegetables or vegetable scraps, making homemade vegetable stock is incredibly easy.

First, wash the vegetables. Next, chop them. The shape isn't important – you just need to break them down enough so that they fit neatly in your saucepan.

Then simmer. Add the vegetables to a large pot with the salt, bay leaves, and peppercorns. Add 2½ litres of water and simmer, covered, for 1 hour.

Finally, strain the stock through a fine mesh strainer to remove the vegetables and peppercorns.

**Storing and using homemade vegetable stock**  
Allow the stock to cool to room temperature. Then, store it in an airtight container in the fridge for up to 5 days, or freeze it for several months.



## Christmas Tree Collection for Salisbury Hospice Charity raises £30k

**Salisbury Hospice Charity is delighted to announce that all previous records have been broken** with this year's Christmas Tree Collection & Recycling initiative – raising £30,000! 1500 trees were collected over 3 days, with 33 vehicles collecting throughout the region.

The initiative is a huge community effort which involved the support of MANY volunteers including those from local businesses. They have kindly dedicated their time, staff and resources in support of the Hospice; many of whom have been touched by the Hospice themselves.

**The money raised from the collection supports Salisbury Hospice – allowing patients to have dignity and choice in their final days; providing support to families, carers and friends, and ensuring that comfort and advice is given at every stage of the dying process.**

Every year, Salisbury Hospice cares for up to 1,000 people living with life-limiting illnesses and its services are free of charge to everyone who uses them. Annually, Salisbury Hospice Charity needs to raise £1.5 million of the £2.9 million required – to maintain the vital palliative care services at the Hospice. This year, Salisbury Hospice Charity will



be donating 10% of profits raised to The Salisbury & South Wilts Scouts. In addition, the collection also helps the environment through giving the trees as food for alpacas and goats, or chipping them thanks to the efforts of several local tree services. Chippings are then used as mulch or reinforcement of footpaths across local farms.

The Charity is extremely grateful to everyone who registered their tree, and would like to extend their gratitude to the kind sponsor Step Associates.

Salisbury Hospice Charity would also like to offer special thanks to: Linden Van Hire, Britz Fish & Chips, Tesco Extra Salisbury, Pizza Hut, Ockenden Tree Services, Mark

Walsh Tree Services, Stump Grinders Tree Specialist, Salisbury & District Young Farmers Club, Serve On, Rose Farm Hurdcott, Newbourne Farm Composting, Barefoot Barns, Nationwide Building Society, Breeze Environmental, Neil & Nick Smith Builder, Donald & Sarah Capewell, Milestone Infrastructure, Clearite,

ASG Landscaping, Wessex Timber Windows, Guyatts of Salisbury, Doccombe Global Logistics, Salisbury Plain 4x4 Wiltshire Byways and Amazon and of course all their wonderful community volunteers.





DATE	4 February			11 February			14 February			18 February			25 February			3 March		
SUNDAY	2nd before Lent			Next before Lent			Ash Wednesday			Lent 1			Lent 2			Lent 3		
SOUTHERN AREA																		
Ansty	-	-	-	11.15	PC	JMH	-	-	-	-	-	-	11.15	AAC	MH	-	-	-
Compton Chamberlayne	09.30	PC <sub>T</sub>	MH	-	-	-	-	-	-	-	-	-	-	-	-	09.30	PC <sub>T</sub>	-
Fovant	08.00	HC <sub>02T</sub>	SE	-	-	-	-	-	-	-	-	-	09.30	PC	EB	08.00	HC <sub>02T</sub>	-
Sutton Mandeville	-	-	-	09.30	MCW	JA	-	-	-	16.00	AAS	EB	-	-	-	18.00	EBCP	-
Swallowcliffe	11.15	PC <sub>T</sub>	JMH	18.00	EBCP	JA	11.00	HC + Ashing	MH	08.00	HCBCP	SE	11.15	MBCP and Baptism	LAY/JMH	11.15	PC <sub>T</sub>	-
NORTHERN AREA																		
Barford St Martin	11.15	AAC	MH	09.30	MCW	LAY	09.30	HC + Ashing	EB	09.30	HCBCP	EB	09.30	AAC	MG	11.15	AAC	-
Baverstock	09.30	HC	MG	-	-	-	-	-	-	-	-	-	-	-	-	-	-	-
Chilmark	11.15	AAC	EB	09.30	AAS	EB	-	-	-	11.15	AAC	MG	11.15	MPr/M	LAY	11.15	AAC	-
Dinton	09.30	AAC and Baptism	EB	-	-	-	-	-	-	09.30	AAC	CF	09.30	MCW	JA	09.30	AAC	-
Teffont Evias	-	-	-	11.15	AAC	EB	-	-	-	-	-	-	-	-	-	-	-	-
Teffont Magna	-	-	-	-	-	-	-	-	-	-	-	-	11.15	AAC	EB	-	-	-
WESTERN AREA																		
Chicklade	-	-	-	-	-	-	-	-	-	-	-	-	-	-	-	-	-	-
Hindon	09.30	PC	JN	09.30	AAC	JN	11.00	HC + Ashing	JN	18.00	EBCP	JN	09.30	PC	MH	09.30	PC	-
Fonthill Bishop	17.00	EBCP	JMH	08.00	HCBCP	JMH	-	-	-	09.30	MBCP	JN	-	-	-	17.00	EBCP	-
Fonthill Gifford	08.00	HCBCP	JMH	11.15	MBCP	JA	-	-	-	-	-	-	11.15	MBCP	JA	08.00	HCBCP	-
Tisbury	09.30	AAS	JMH/JA	09.30	PC	JMH	10.00	HC + Ashing	JMH	09.30	PC	JMH/JD	08.00	HCBCP	JMH	09.30	AAS	-
										18.00	Choral EBCP	JMH	09.30	PC	JMH			

## SERVICES

- AAC** All Age Communion
- AAS** All Age Service
- BCP** Book of Common Prayer
- CbE** Communion by Extension
- CW** Common Worship
- E** Evensong or Evening Prayer
- FC** All Age Family Communion
- HC** Holy Communion (*said*)
- HC<sub>02T/C</sub>** Order 2 Communion, *traditional/contemporary*
- M** Mattins or Morning Prayer
- MPr** Morning Praise

- PC** Order 1 Communion (*with hymns*)
- PC<sub>T</sub>** Order 1 Communion, *traditional language (with hymns)*
- PC<sub>02T</sub>** Order 2 Communion, *traditional language (with hymns)*
- PC<sub>02T/C</sub>** Order 2 Communion, *traditional/contemporary*
- RS** Reflective Service
- SoP** Songs of Praise
- SoW** All Age Service of the Word

## CLERGY

- CF** Colin Fox
- EB** Elaine Brightwell
- JA** Judy Anderson
- JD** Julie Dunstan
- JMH** Juliette Hulme
- JN** Jo Naish
- MG** Michael Goater
- MH** Mark Hayter
- SE** Simon Evans

Come and join us for a time of quietness and space to find



## Wholeness and Healing

We invite everyone to join us for our monthly time of prayer and contemplation – for yourself and for those whom you care about. A time to remember all those in difficulties, or alone this winter.



### 3.00pm Wednesday February 7th

St Andrew's Chapel,  
St John the Baptist Church, Tisbury  
Please note the date – we meet on the first Wednesday this month



“Come unto me you who are heavy laden and I will refresh you” Matthew 11:28



**FOR A HARD COPY OF THE CHURCH TIMES PLEASE PRINT THIS DOUBLE PAGE SPREAD ON YOUR PRINTER.**

**WHEN USING YOUR PRINTER: Ensure your page is set to LANDSCAPE mode.**

**This PDF file treats each double page spread as one single page. SO TO PRINT THIS SPREAD SET YOUR PRINTER TO PRINT PAGE 18 ONLY.**

**DO NOT PRINT AT ACTUAL SIZE BUT ENSURE THE PRINT IS REDUCED TO FIT THE SHEET.**



# Diversity within Unity

THE OTHER WEEK, I met three friends, as I do regularly, to play chamber music – what better way to spend a cold winter afternoon? During our break for tea and cake, someone remarked that what we were doing was in a way an illustration of how a community works. When we play a piece of music, each of us has our own part to play, each part is different, no part is complete in itself and yet all the parts together make a beautiful and satisfying whole. We each need to play our own part to the best of our ability, but also listen to all the others and fit in with them.



In each of our villages, we have a wide range of different people. Often, we are each doing our own thing. Certainly, we have very different personalities, we cover the whole spectrum of ages, we have different interests and preferences, and we come from a variety of backgrounds. Yet, it's the coming together of all those different strands that makes each of our communities what it is, as we all play our own part while at the same time fitting in with others.

The Nadder Valley comprises a large number of villages. These have certain things in common, but undoubtedly we are a diverse collection of individual communities. Some are large, some are small. Some have several shops, some have one village shop, some have no such facility. Three of our villages have a doctors' surgery which between them serve us all. Some are on or near a main road, others are more remote. One even has a railway station! Each is a community in itself, and together these villages form the wider community of the Nadder Valley.

When it comes to our churches, people are sometimes confused. Why do we need a Church of England

church, a Roman Catholic church and a Methodist church, for example, in the same village? Are they not all doing the same thing? On the other hand, some might ask, is Christianity split, with several 'brands' in competition, in the same sort of way as rival supermarkets are in a town such as Shaftesbury or a city like Salisbury? All Christians worship the same God, but there is diversity in the ways we worship and in some of the minor details of our belief. The different denominations (or 'branches') of the Church come together on such occasions as the Week of Prayer for Christian Unity towards the end of January, or in a joint procession on Palm Sunday. And the Church of England churches in the various villages come together several times a year for Sunday worship, while maintaining their individual identity at the heart of their own communities.

In short, so many aspects of our lives may be summed up as diversity within unity. May our diversity, the different strands each of us brings, continue to contribute to the rich tapestry of the communities in which we live, work and worship.

**Canon Judy Anderson**  
**Licensed Lay Minister**



Dinton

SAVE THE DATE!

## The Nadder Valley Team are holding a Pancake Day Workshop

Tuesday February 13th 2024 14.30pm – 16.30pm

**DINTON CRICKET PAVILION**



Contact Revd Jo Naish  
on 01747 871820

or email

**revdjoannanaish@gmail.com**

to book your spot.



Barford St Martin



Burcombe



## TEA and CHATS

Our local councillor **Nabil Najjar** will join us and give us a short talk about his work in our villages. Do come and join us to meet him and ask any questions you may have.

**Thursday 15th February 2.00–4.00pm**  
**St Martins Church, Barford St Martin**

**ALL ARE WELCOME**

Tea, coffee, cake and plenty of time for chat and meet friends old and new. There is no charge, any donations will be for the church for the use of its warm place.

**Jenny Barrett : jennybarford@gmail.com**





Compton Chamberlayne

# Village Hall for hire

Our village hall is available to hire for celebrations, presentations, exercise or whatever else you have in mind. Bunting is always included!

Contact Sara Willan  
sarawillan@gmail.com

## Get your business noticed in Village Buzz

**ADVERTISE WITH US FOR 6 MONTHS** — Half page – £60 | Whole page – £120 | Double page spread – £180  
**ADVERTISE WITH US FOR A WHOLE YEAR** — Half page – £100 | Whole page – £200 | Double page spread – £300



## Dear dog walkers and dog owners.

A tiny selfish minority are giving dog owners a bad name. Please ensure that our village lanes and paths are kept clean for everybody to enjoy safely!



### SUDOKU solution

February 24  
from page 28

1	6	3	2	8	5	4	7	9
8	4	9	6	7	1	2	5	3
5	7	2	9	3	4	8	6	1
7	8	1	4	2	3	6	9	5
9	5	4	1	6	8	7	3	2
3	2	6	7	5	9	1	8	4
4	9	5	8	1	6	3	2	7
6	1	7	3	9	2	5	4	8
2	3	8	5	4	7	9	1	6

### CROSSWORD Solution

February 24  
from page 29

L	I	G	U	R	I	A	N	S	E	A	J	I	O
L	E	E	V	Y	S	U	E						
A	C	R	I	D	A	G	N	E	S	G	R	E	Y
N	A	G	L	G	I	G	O						
E	T	R	U	R	I	A	E	A	S	T	E	R	N
R	O	A	N	T	I	N	C						
O	R	O	V	I	C	T	I	A	N	S	B	R	V
E	E	H	S	Z	L								
P	O	P	E	D	E	L	P	H	I	N	I	U	M
F	A	D	A	M	A	N	E						
E	A	R	H	A	R	T	R	O	B	U	S	T	A
N	O	N	A	A	A	M	N						
N	E	E	L	Y	O	U	N	G	B	E	A	R	D
I	E	A	P	U	W	N	E						
G	N	U	N	T	E	R	S	T	E	I	N	E	R

### WOULD YOU LIKE TO ADVERTISE WITH US BUT HAVE NO ARTWORK?

We will design and produce your ad for FREE\*

\* Minimum order, half page for 6 months.

[jan@villagebuzz.online](mailto:jan@villagebuzz.online)

Contact details:

Editor: Gill Fisk | [gill@villagebuzz.online](mailto:gill@villagebuzz.online)

Design & Advertising:

Jan Kalinowski | [jan@villagebuzz.online](mailto:jan@villagebuzz.online)

mobile: 07881 288027

## Advertising & article submission deadline



### Monday 19 February

If you plan to submit ready-made advertising please ensure that the file is in the format of either a high resolution Acrobat PDF file or a high resolution JPEG (300ppi) file – thank you.

# VILLAGE BUZZ



A MONTHLY ONLINE MAGAZINE FOR VILLAGES NESTLING IN AND AROUND THE NADDER VALLEY

FEBRUARY 2024

## USEFUL INFORMATION

### **SALISBURY HOUSEHOLD RECYCLING CENTRE**

**SUMMER (1 April - 31 October)**  
9.00am - 4.00pm  
**CLOSED ON THURSDAYS**

**WINTER (1 November to 31 March)**  
10.00am - 4.00pm  
**CLOSED ON THURSDAYS & FRIDAYS**  
Stephenson Road,  
Churchfields Industrial Estate SP2 7NP  
Tel: 01722 322309

### **MEDICAL**

#### **SPRING ORCHARD SURGERY**

Telephone: 01722 714789  
Spring Orchard Surgery, High Street, Fovant,  
Salisbury, Wiltshire, SP3 5JL

#### **OLD ORCHARD SURGERY**

Telephone: 01722 744775  
Old Orchard Surgery, South Street, Wilton,  
Salisbury, SP2 0JU

#### **SALISBURY DISTRICT HOSPITAL**

Odstock Rd, Salisbury SP2 8BJ  
Tel: 01722 336262

#### **NICHOLSON AND BOUGH CHARITY FOR BARFORD ST MARTIN RESIDENTS**

**Telephone: 01722 744546**  
or write in strict confidence to:  
Clerk to the Trustees, 2 The Poplars,  
Barford St Martin, SP3 4AR

### **THEATRES/ART**

#### **Salisbury Playhouse**

Malthouse Lane, Salisbury SP2 7RA  
Tel: 01722 320333

#### **Salisbury City Hall**

Malthouse Lane, Salisbury SP2 7TU  
Tel: 01722 434434

#### **Salisbury Arts Centre**

Bedwin St, Salisbury SP1 3UT  
Tel: 01722 321744

#### **Odeon Cinema Salisbury**

New Canal, Salisbury SP1 2AA  
Tel: 0333 014 4501

### **WILTSHIRE COUNCIL**

#### **HEAD OFFICE**

Bythesea Road, Trowbridge, Wiltshire BA14  
8JN

#### **BOURNE HILL**

Salisbury, Wiltshire, SP1 3UZ  
Council offices are open Monday to Friday  
from 8.30am until 5.30pm

#### **WILTSHIRE COUNCIL SERVICES**

##### **Worried about a child?**

If you believe a child or young person is at risk of significant harm, neglect or injury, report your concerns to the Multi-Agency Safeguarding Hub (MASH) on 0300 4560108.

##### **Adult Care**

Tel: 0300 456 0111  
adviceandcontact@wiltshire.gov.uk

##### **Benefits**

Tel: 0300 456 0110  
benefits@wiltshire.gov.uk

##### **Blue Badges**

Tel: 01225 713002  
bluebadge@wiltshire.gov.uk

##### **Building Control**

Tel: 0300 456 0113  
buildingcontrol@wiltshire.gov.uk

##### **CHILDREN'S SERVICES**

###### **Early Help**

Tel: 01225 718230

###### **Children's Services**

Special Educational Needs and Disability (SEND)  
Tel: 01225 757985

###### **Children's Services Social Care**

Tel: 01722 438165

##### **COMMUNICATIONS**

(press and media related enquiries)  
Tel: 01225 713115 or 01225 713370  
communications@wiltshire.gov.uk

##### **Corporate Investigation Team**

01249 706456  
investigations@wiltshire.gov.uk

##### **Council Tax**

Tel: 0300 456 0109  
counciltax@wiltshire.gov.uk

##### **Elections**

Tel: 0300 456 0112  
elections@wiltshire.gov.uk

##### **Early Years and Childcare**

Tel: 0300 003 4561  
earlyyears@wiltshire.gov.uk

##### **Fraud Hotline (24 hours)**

Tel: 01249 706456

##### **Highways**

Tel: 0300 456 0105 or to report non-urgent highway defects.

##### **Homes4Wiltshire (housing register)**

Tel: 0300 456 0104  
homes4wiltshire@wiltshire.gov.uk  
Housing Options/Homelessness homeless@wiltshire.gov.uk  
Tel: 01722 434233

##### **Parking**

Tel: 01249 706131  
parking@wiltshire.gov.uk

##### **Pest Control, Noise and Pollution, Environmental Health**

Tel: 0300 456 0107  
customerservices@wiltshire.gov.uk

##### **Planning**

Tel: 0300 456 0114  
developmentmanagement@wiltshire.gov.uk

##### **Rubbish and Recycling**

Tel: 0300 456 0102  
customerservices@wiltshire.gov.uk

##### **Schools Admissions**

Tel: 01225 713010  
admissions@wiltshire.gov.uk

##### **School Transport**

Tel: 01225 712852  
educationtransport@wiltshire.gov.uk

##### **Can't find the service you require?**

##### **Contact Customer Services**

Tel: 0300 456 0100



CLICK or TAP to go back to the CONTENTS PAGE