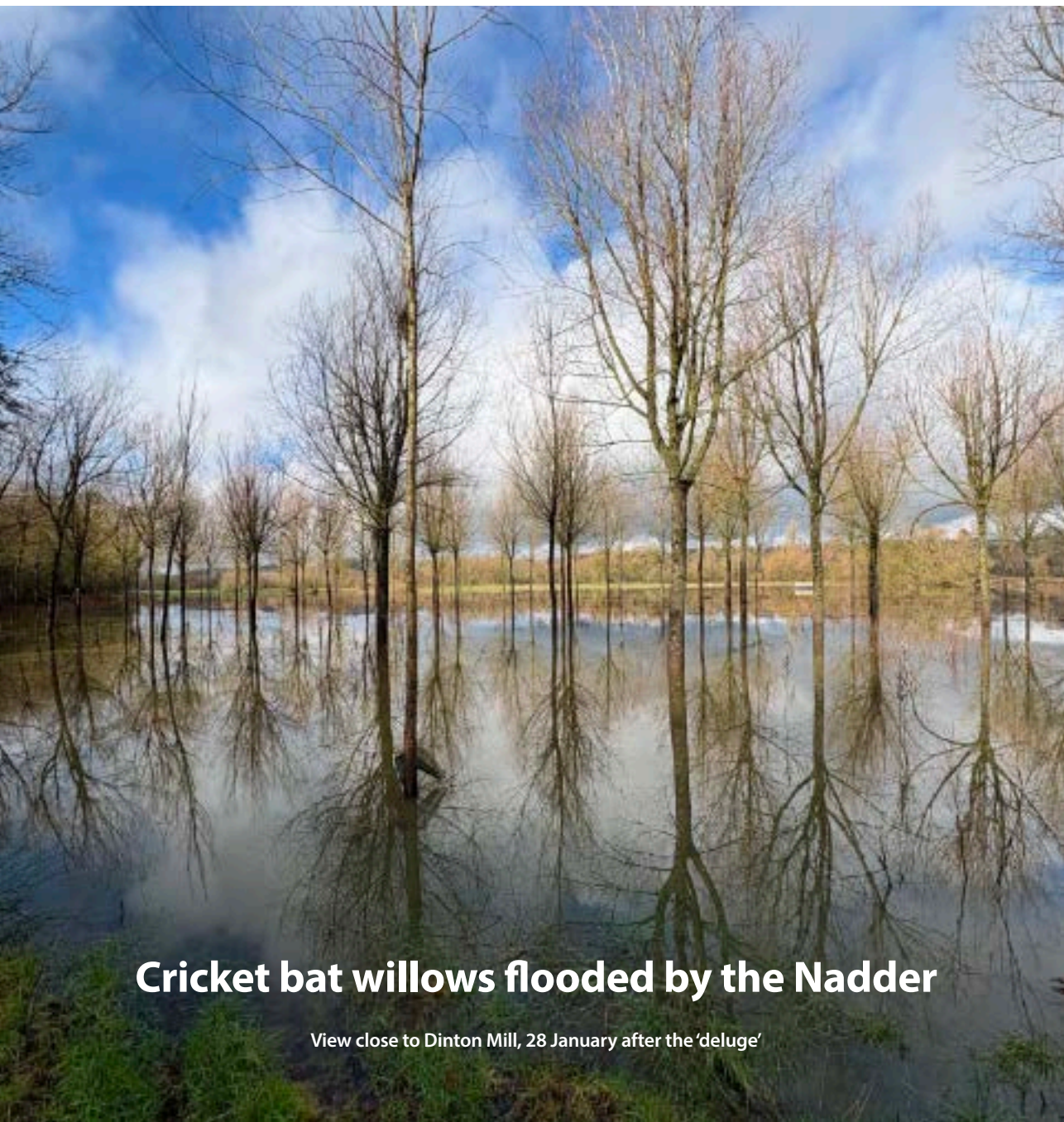


# VILLAGE BUZZ



A MONTHLY MAGAZINE FOR VILLAGES IN AND AROUND THE NADDER VALLEY, SALISBURY, WILTSHIRE

**FEBRUARY 2026**



**Cricket bat willows flooded by the Nadder**

View close to Dinton Mill, 28 January after the 'deluge'





We combine traditional building skills, passed down through generations, with modern day techniques and materials to fulfil your lifestyle aspirations.

That's why we make great buildings that stand the test of time. Buildings made for living. A place that people call home. Not just for now, but for generations to come.

**MOULDING**

THE COUNTRY HOUSE BUILDERS

01722 742228 | [thecountryhousebuilders.co.uk](http://thecountryhousebuilders.co.uk)



This is a PDF file with INTERACTIVITY.  
Simply **CLICK** or **TAP** any email, web address or page link.



## Contents page

Just **click** or **tap** on any of the panels below to take you to the relevant two page spread.



Species of the month  
**Sticklebacks**  
Peter Thompson  
spread 3



Dr Kinlin's Focus Session  
**PAIN**  
spread 17



**LOCAL CINEMA**  
Donhead St Mary  
Bishopstone  
spreads 7/8



**ALLOTMENTS FOR GRAB**  
spread 19



**POETRY**  
February  
Margaret Atwood  
spread 9



Brain Gym  
spread 20



Images of the Nadder  
spreads 12/13



Nadder Valley Benefice  
**Church Services**  
spread 21



**TO PRINT A SPREAD:** Village Buzz has a new page numbering format that ties in with the spread you see on your screen. Each spread now has only one 'page' number (eg these 2 pages are now spread 2), so to print out a particular spread simply specify the spread number at the bottom.

**Dear Reader:** Do you have an interesting story to tell or a hilarious tale or memorable experience to share? Is there a special poem that moves you? Or do you have a fascinating family history or a passionate interest that you would like to spread the good word about? **Email us** and we will create an attractive article in Village Buzz for you and our readership to enjoy reading together — Just send me your text and any images to: [jan@villagebuzz.online](mailto:jan@villagebuzz.online) and we'll do the rest.



Species of the month

## The Stickleback

Peter Thompson, Barford.

**When I was a nipper, I had a number of aquariums on the go, not with any frilly, brightly coloured warm water-loving 'foreign' species mind you – oh no, I kept home caught sticklebacks and stone loaches in my tanks!!**

Sticklebacks in particular fascinated me, and I would urge anyone with children who show even the slightest interest in wildlife, to set up a small tank with sticklebacks and encourage them to study these 'tiddlers'. They are really easy to look after and you never know – it might just be the trigger that starts a lifelong interest in natural history!



In the UK there are three recognised species: the three-spined stickleback *gasterosteus aculeatus* and the nine-spined stickleback *pungitius pungitius* can be found in freshwater, saltwater or brackish waters, whereas the fifteen-spined stickleback *spinachia spinachia* is purely marine.

I am going to concentrate here on the most commonly found species in the UK – the three-spined stickleback. They are found widely in ponds, lakes, ditches, streams and rivers, but don't always have three spines along their back, sometimes there are only two and occasionally there are four. These sharp spines, coupled with large bony side plates (which they have rather than scales) help to provide some protective armour against predators.

Should another fish try to swallow a Stickleback, the fish will immediately raise up the spines so that it cannot be swallowed, resulting in the larger fish having

to spit the potential meal back out, completely unharmed!

Sticklebacks are noted for their highly ritualized breeding behaviour, with the male in particular playing a key role. Breeding usually takes place during the spring, by which time the male develops a bright red throat and belly and performs a striking 'zig-zag' courtship dance to attract a mate. He also builds a roofed nest out of



CLICK or TAP to go back  
to the CONTENTS PAGE

CONTINUED





vegetation, all glued together by threadlike, mucous secretions from his kidneys, known as spiggin (what a great word!)

The male then coaxes a female into the arched nest to lay her eggs, following her there so as to fertilise the eggs. More than one female may be chosen, and each female may lay up to 200 eggs. Once the nest is full, the male become an aggressive guard, attacking any intruder that dares to come close, while also fanning the eggs with his pectoral fins to supply them with oxygen, until they are ready to hatch some four weeks later.

All of these antics can be watched close up, taking place quite happily in your very own tank. You can feed your captive sticklebacks on tiny bits of chopped up worm or even raw mince.

So how do you go about catching your stickleback? Well that's great fun too! I have put a link below for instructions on how to make your very own trap out of a couple of plastic bottles. What is more, I can vouch

that these do work – and will catch you other things besides sticklebacks!!

So come on parents – get your kids away from the various screens that they look at and into some serious natural history studies! Keeping burnstickles, jacksharps, pricklebacks, baggie minnows or red doctors, (some of the many vernacular names for the three-spined stickleback) should captivate them. But even if it doesn't, they will surely fascinate you!

Stickleback trap details:

<http://jbryant.eu/pages/stickleback.htm>

You can also buy cheap traps online – just type “Stickleback traps” into Google. You can also bait these traps – I used to use a tiny bit of raw mince. — PT

Peter Thompson lives in Barford St. Martin and has worked in conservation and farming all his life. He is Chair of the Salisbury & District Natural History Society and would be delighted if readers joined either the society's Facebook page or the society itself – or indeed both! If you are interested, please see details on the right.


**Fovant Youth Club, High St, Fovant SP3 5JL**

**HALL  
FOR HIRE**

**ROOM  
FOR UP TO  
60 PEOPLE**

**AVAILABLE  
FOR EVENTS  
MEETINGS  
CHILDRENS'  
PARTIES**

**WIFI  
PROJECTOR  
TABLES, CHAIRS  
KITCHEN &  
ACCESSIBLE  
TOILETS**



**INCLUDING SMALL GARDEN  
WITH SOME OFF-ROAD PARKING**

**Contact Jan on 01722 714342**

**SALISBURY & DISTRICT  
NATURAL HISTORY SOCIETY**



**REGULAR FIELD MEETINGS & INDOOR TALKS**

Founded in 1952, the society studies and records the natural history of Salisbury and the surrounding area.

No expertise is needed to join us! Everyone with an interest in nature and the countryside is welcome.

**Annual subscription is only £10**  
**Family membership – £15**  
**Junior membership – Free**

So, if you would like to find out more about the wildlife in your local area, and meet friendly, like-minded people, go to:

[www.salisburynaturalhistory.com](http://www.salisburynaturalhistory.com)

f

[www.facebook.com/groups/salisburynaturalhistorysociety](http://www.facebook.com/groups/salisburynaturalhistorysociety)



# Lawn care to the highest possible standards

Get an INSTANT, no obligation quote by using our online lawn measuring tool in 3 easy steps:

[GET INSTANT QUOTE](#)

- 1 Enter your postcode
- 2 Outline your lawn
- 3 Submit your details



What makes Lawntech stand out from the crowd?

- 🌿 A track record of over 30 years experience, delivering consistent professionalism
- 🌿 Highly qualified and accomplished technicians with over 130 years of combined experience
- 🌿 Offering a sustainable approach to lawn care, using semi organic fertilisers. Fully organic treatment programme available



**FREEPHONE 08000 665 465**

Free to call - landlines and mobiles

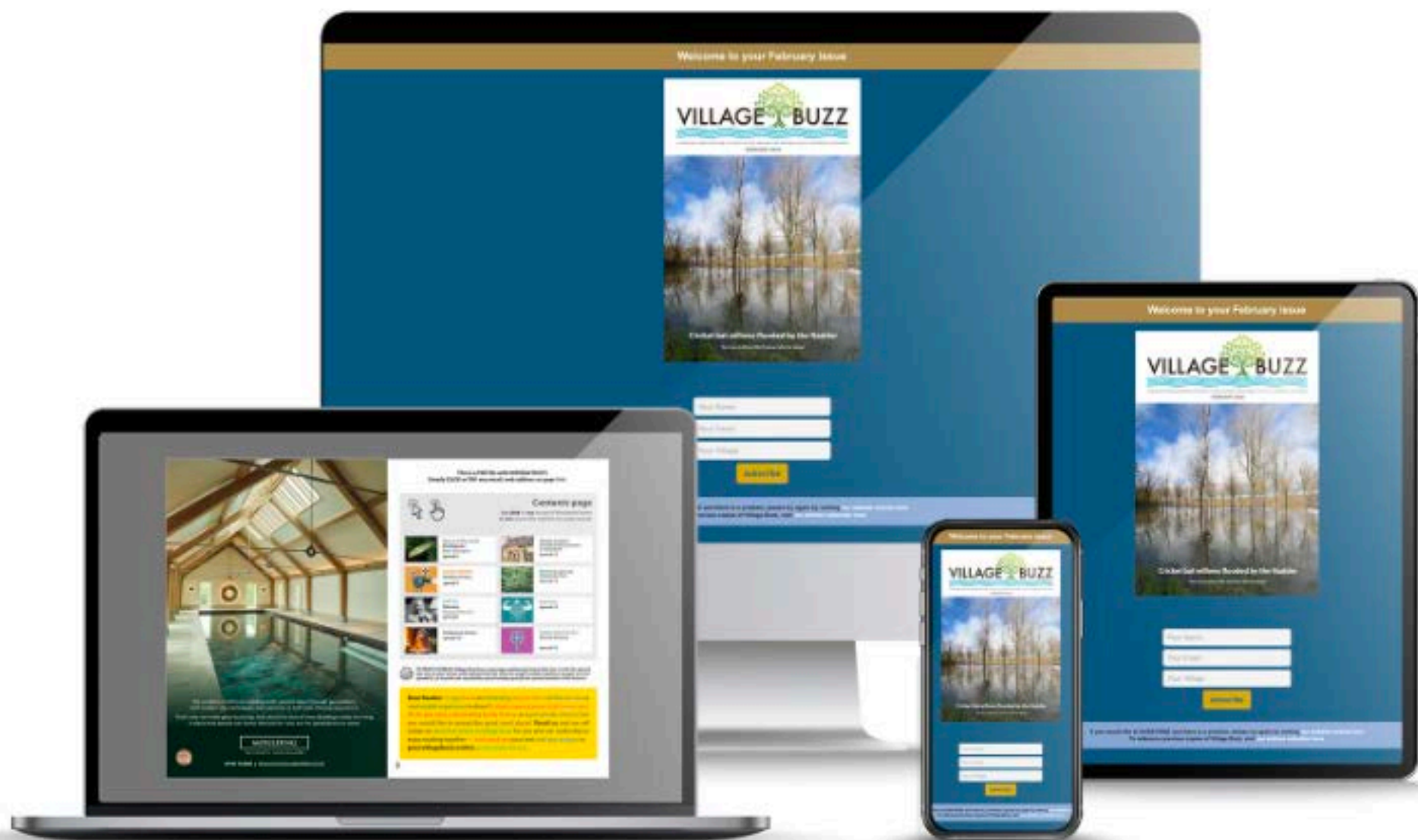
[info@lawn-tech.co.uk](mailto:info@lawn-tech.co.uk)

[www.lawn-tech.co.uk](http://www.lawn-tech.co.uk)





If you run a business you'd like our readership to know about, let us know.



[jan@villagebuzz.online](mailto:jan@villagebuzz.online) | [gill@villagebuzz.online](mailto:gill@villagebuzz.online)

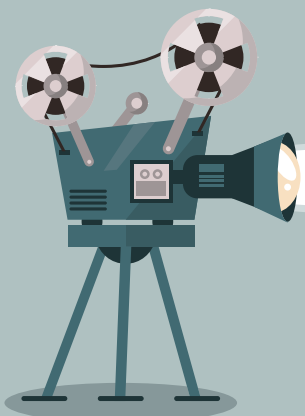
**villagebuzz.online**  
because that's where we are – online



Donhead St Mary



NOT TO BE MISSED



# Moviola Cinema

## Donhead St Mary

Donhead St Mary Village Hall, Church Hill,  
Donhead St Mary, SP7 9DQ.  
Doors open at 6.30pm and the film  
starts at 7.15pm.

**Tickets are available from Ludwell Village Shop  
from 11.00am.**

**If you would like to reserve your tickets online,  
[please click here.](#)**

Unfortunately, we have had to add a small booking fee to  
cover the cost of this service.

### Downton Abbey: The Grand Finale PG 12 February 2026



When Mary finds herself in a public scandal and the family faces financial trouble, the household grapples with the threat of social disgrace. The Crawleys must embrace change with the next generation leading Downton Abbey into the future.

### The Choral 12a 12 March 2026



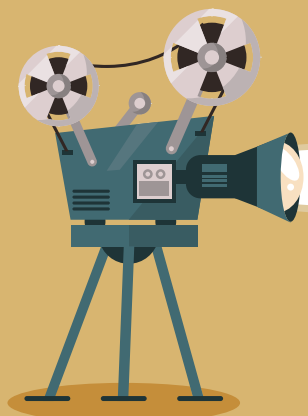
A choral society's male members enlist in World War I, leaving the demanding Dr. Guthrie to recruit teenagers. Together, they experience the joy of singing while the young boys grapple with their impending conscription into the army.



CLICK or TAP to go back  
to the CONTENTS PAGE



MOVIOLA LTD EXISTS TO PROVIDE A RANGE OF HIGH QUALITY  
CINEMA-RELATED EVENTS FOR PEOPLE LIVING IN RURAL  
PARTS OF THE UK, WITH THE AIM OF REDRESSING THE  
IMBALANCE BETWEEN TOWN AND COUNTRYSIDE IN ARTS  
AVAILABILITY AND PARTICIPATION.



# Moviola Cinema

## Bishopstone

Bishopstone Village Hall SP5 4AA, usually on the last Friday of the month, at 7.30pm. Doors open at 7.00pm when a bar and snacks are available.

Bookings should be made with Caroline either by phone 01722 781044 or email: [bvhticketoffice@btinternet.com](mailto:bvhticketoffice@btinternet.com) — Entry is £6, paid on the door by cash, card or cheque.

### Downton Abbey: The Grand Finale PG 30 January 2026



When Mary finds herself in a public scandal and the family faces financial trouble, the household grapples with the threat of social disgrace. The Crawleys must embrace change with the next generation leading Downton Abbey into the future.

### The Roses 15 27 February 2026



A tinderbox of competition and resentments underneath the façade of a picture-perfect couple is ignited when the husband's professional dreams come crashing down.





**Margaret Atwood** is a celebrated Canadian writer known for her sharp intelligence, dark wit, and fearless imagination. She has written across many genres—including novels, poetry, essays, and speculative fiction—but is best known for works like *The Handmaid's Tale* and *Oryx and Crake*, which explore power, gender, and the consequences of human choices. Her poetry, marked by precision, irony, and emotional restraint, plays a central role in her career and often examines identity, nature, and human relationships. Atwood's writing frequently feels uncannily prophetic, blending social critique with compelling storytelling, and she remains one of the most influential literary voices of the modern era.

Poetry may not be what Margaret Atwood is most famous for, but she has in fact published eighteen books of poetry. And, judging by this example, she is quite an accomplished poet. This one made me smile in recognition at her description of the interaction with the cat. Also, her description of our increased appetite in winter seems, unfortunately, spot on.

## February

BY MARGARET ATWOOD

Winter. Time to eat fat  
and watch hockey. In the pewter mornings, the cat,  
a black fur sausage with yellow  
Houdini eyes, jumps up on the bed and tries  
to get onto my head. It's his  
way of telling whether or not I'm dead.  
If I'm not, he wants to be scratched; if I am  
He'll think of something. He settles  
on my chest, breathing his breath  
of burped-up meat and musty sofas,  
purring like a washboard. Some other tomcat,  
not yet a capon, has been spraying our front door,  
declaring war. It's all about sex and territory,  
which are what will finish us off  
in the long run. Some cat owners around here  
should snip a few testicles. If we wise  
hominids were sensible, we'd do that too,  
or eat our young, like sharks.  
But it's love that does us in. Over and over  
again, He shoots, he scores! and famine  
crouches in the bedsheets, ambushing the pulsing  
eiderdown, and the windchill factor hits  
thirty below, and pollution pours  
out of our chimneys to keep us warm.  
February, month of despair,  
with a skewered heart in the centre.  
I think dire thoughts, and lust for French fries  
with a splash of vinegar.  
Cat, enough of your greedy whining  
and your small pink bumhole.  
Off my face! You're the life principle,  
more or less, so get going  
on a little optimism around here.  
Get rid of death. Celebrate increase. Make it be spring.



Bishopstone

## BISHOPSTONE VILLAGE HALL

*PRESENTS AN EVENING WITH*

**ROB BARRATT**



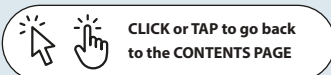
*Rob Barratt is a Dudley-born and Cornwall-based comic poet, humourist and singer. His brain-tickling, word-mangling performance combines clever word play, verse and song with satire, parody and audience participation.*

**Friday 13<sup>th</sup> February.**

**Doors and bar open at 7.00pm for a 7.30pm start.**

Tickets are **£10.00** each and an optional light supper will be available at **£7.50**.

Please book in advance with Caroline Ash on 01722 781044, or Sue Taylor on 01722 780316, stating any dietary requirements if taking the supper.







EST. 2004

COMPTON SMITH  
INTERIORS

- Interior decorating consultancy.
  - Bespoke curtains, blinds and upholstery.
  - Suppliers of well-known specialist paints.
  - Extensive fabric & wallpaper library.
- Farrow & Ball, Edward Bulmer, Little Greene, Pierre Frey, Colefax & Fowler, Fermoie, Lewis and Wood, Sanderson Design Group and many more designers.



CLICK or TAP to go back  
to the CONTENTS PAGE



Mondays to Thursdays: 08.30 - 17.30

Fridays: 08.30 - 17.00 Saturdays: 09.30 - 13.00

Tel: +44 (0)1747 850150 info@comptonsmith.co.uk

10d Wincombe Business Park, Shaftesbury, Dorset, SP7 9QJ

WWW.COMPTONSMITH.CO.UK





## Salisbury Hospice Charity is set to host **The Big Try on Saturday 14th March** **at Salisbury City Hall**

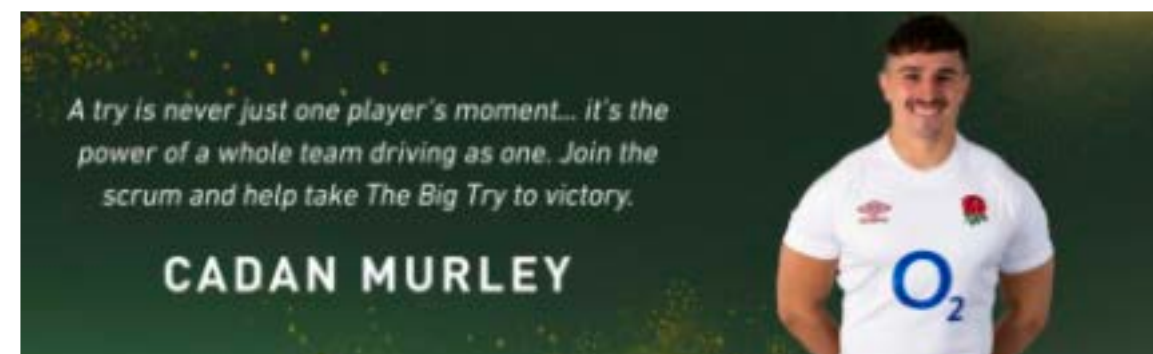
The event invites rugby enthusiasts to take part in an 8-mile sponsored walk across Salisbury's most loved landscapes.

The walk includes a halfway pit stop at Salisbury Rugby Club, where participants will enjoy a free pasty and pint before returning to City Hall to watch live screenings of three Six Nations games. The event is kindly endorsed by Richard Hill and Cadan Murley, who will provide insights, encouragement, and fitness tips in the lead-up to the event, helping participants feel like the pros are right there in the scrum.

A special promotional evening was held on Wednesday 21st January which gave rugby fans the opportunity to attend "An Evening with Cadan Murley: Behind the Try Line" in March, an exclusive session with the England Rugby player and vice-captain of Harlequins.

Tickets for The Big Try and An Evening with Cadan Murley are available online. Fans are encouraged to book early to secure

IRE	SCO
WAL	ITA
FRA	ENG



their place and take advantage of Early Bird Kick Off ticket prices for The Big Try.

For more information and to book tickets, click on the website below.

For more information about Salisbury Hospice Charity and upcoming fundraising events, please visit [www.salisburyhospicecharity.org.uk](http://www.salisburyhospicecharity.org.uk) or contact us on 01722 416353

[www.salisburyhospicecharity.org.uk/event/the-big-try](http://www.salisburyhospicecharity.org.uk/event/the-big-try)

Compton Chamberlayne

Local designer can make your business look good!

07881 288027  
jan@septemberdesign.co.uk

amazing!





**Cricket bat willows (*salix alba* var. *caerulea*) reflecting in the flooded Nadder in Compton Chamberlayne after the deluge from storm Chandra.**





Following the storm a new winterbourne flows merrily by...





Teasel  
Furniture Makers

Handmade  
Bespoke  
Cabinetry

Please contact us with any project enquiries.

07561 091 252

sam@teaselfurnituremakers.co.uk

www.teaselfurnituremakers.com

 teaselfurniture.makers

Manor Farm, Sutton Mandeville, SP35NL



SlimmingWorld

**TISBURY**

HINTON HALL, CHURCH STREET

MONDAY 7PM

EVELYN - 07825 556871



real food, real support, real results

feel  
real  
good



## Boiler Servicing & Maintenance

BREAKDOWNS | REPAIRS | OIL | GAS | LPG

Mark Benfield

07974 249287

mark@mabheatingservices.co.uk

## YOUR LOCAL FULLY QUALIFIED PLUMBER AND HEATING ENGINEER

Over 30 years experience

- Gas & Oil
- Plumbing
- Heating
- Boiler & Cooker Servicing

No call out charge

Same day and emergency service available

Please contact Harvey on 07767887788

or contactrcm@gmail.com

Gas Safe Registration no 133743







# Join the Stars Appeal's Walk for Wards in support of Salisbury Hospital

**The Stars Appeal, Salisbury Hospital's Charity, is inviting the community to lace up their walking boots and take part in this year's Walk for Wards.**

The free annual sponsored walk around the Wilton Estate, which attracts thousands of participants every year, takes place on Sunday July 5. Walkers can take part to say thank you to a ward or department at Salisbury District Hospital that has cared for them or their family, or in memory of a loved one.

Entry is free and includes lunch as well as admission to the Wilton House gardens and the adventure playground. Walkers must register in advance at [www.starsappeal.org](http://www.starsappeal.org)

Paediatric Emergency Medicine Consultant and Stars Appeal Ambassador Dr Gail Ng said: "Every day, I see the difference Stars Appeal funding makes to patients at Salisbury Hospital, from state-of-the-art equipment such as the MRI scanner, to the dedicated children's facilities, which help make a child's time in hospital far less frightening. Thoughtful touches like mobile phone charging stations and Stars Appeal Wi-Fi help families stay connected during incredibly difficult moments, while emergency clothing and toiletry packs provide much-needed comfort especially for those who arrive in hospital unexpectedly. By taking part in Walk for Wards you will be helping the Stars Appeal to continue making a real difference to the care we are able to provide at our hospital."

There are four routes to choose from including the family friendly 3k or 5k walk or the more challenging 10k or the 15k, which is back by popular demand.

Money raised at Walk for Wards helps the Stars Appeal towards its goal of raising £2million this year to fund projects helping



thousands of patients, their families and staff across Salisbury Hospital.

The President of the Stars Appeal, The Earl of Pembroke, added: "Walk for Wards is a fantastic day out for all ages and a wonderful way to show your support for our hospital while raising vital funds for the Stars Appeal. I encourage as many people as possible to join us for our flagship sponsored walk and experience the extraordinary atmosphere of the day, alongside the beautiful setting of Wilton House. Bring your family and friends along too. I look forward to seeing you all on Sunday 5th July for an event not to be missed."

Walk for Wards is held by kind permission of Lord Pembroke and Lady Pembroke, sponsored by Salisbury Reds, with support

from Wilton and Salisbury Rotary Clubs who marshal the event, and many other local people and organisations.

Andrew Sherrington, Salisbury Reds general manager, said: "Stars Appeal is our official charity partner - and we're keen to help raise as much awareness as possible for this very worthy cause. Many of our team members have close links to the charity and this is a great chance for us to support its work.

"The Walk for Wards event is a fantastic family occasion - giving local people the opportunity to enjoy the beautiful surroundings of the Wilton Estate and raise funds in the process.

I can't think of a better way to enjoy a Sunday this summer than to spend it in support of Stars Appeal - and I'm looking forward to joining everyone there this July."

Walkers are asked to sign up in advance and commit to raising at least £20/£50 sponsorship per person (route dependent) for their chosen ward or department. To register for free or for more information go to [www.starsappeal.org/event/walk-for-wards/](http://www.starsappeal.org/event/walk-for-wards/) or call 01722 429005.

**The President of the Stars Appeal, The Earl of Pembroke, with Stars Appeal Hospital Ambassadors, and staff from Salisbury Reds at a launch event for Walk for Wards at Wilton House. Picture by Mark Bastick.**

Link to YouTube video of Walk for Wards 2025

<https://youtu.be/icMBsCuq7qwsI=JBADNVX97V2WN2C9>





## Stars Appeal Christmas Raffle raises over £20,000

The Stars Appeal's Christmas Raffle raised over £20,000 to support projects helping patients, their families and staff at Salisbury Hospital.

For winner Terry Smith, from Dinton, who scooped the top prize of £2,500, it was a brilliant start to the new year. He said: "I'm very overwhelmed and speechless. I'm very pleased to have won."

The Stars Appeal, Salisbury Hospital's Charity, aims to raise £2million each year to fund projects which offer direct, practical support to patients, their families, and the hospital's staff. The money raised in raffle ticket sales and donations will help to fund the charity's work across the hospital providing the latest diagnostic and treatment equipment, enhancements to buildings, and ongoing projects including free wi-fi, support for people with cancer, a dedicated play assistant and specialist therapy equipment for children, hospital chaplains, and emergency patient clothing.

Helena Sinclair, of the Stars Appeal, said: "A massive thank you to everyone who supported our Christmas Raffle, and congratulations to our lucky winners. The amazing funds raised will help support projects across Salisbury Hospital, benefiting patients, their families, and the dedicated staff who care for them. We are also incredibly grateful to our prize sponsors Wilsons Solicitors and FJ Chalke for their continued support."

The £2,500 first prize was kindly sponsored by Wilsons Solicitors and the second prize of £500 was sponsored by FJ Chalke. A third prize of £250 was also up for grabs along with other cash prizes.

To find out more about the Stars Appeal visit [www.starsappeal.org](http://www.starsappeal.org)

Stars Appeal Ambassadors and hospital staff with Peter Bourke, of Wilsons Solicitors, and George Chalke, of FJ Chalke.



Award winning Hindon-based building company serving Wiltshire, Dorset and Somerset. Specialising in the residential sector, including historical and listed properties, bespoke new-builds, extensions and renovations.



**P F Parsons Ltd** Unit 1 Wylle Road Hindon Salisbury SP3 6ER [www.pfparsons.co.uk](http://www.pfparsons.co.uk) 01747 820422  
[enquiries@pfparsons.co.uk](mailto:enquiries@pfparsons.co.uk) Find us on Instagram @pfparsonsltd







Fovant



Dinton

## A Doctor Explains.....

**Dr Lindsay Kinlin** has expanded her successful and very well received talks on various medical issues. Dinton has also now agreed to host these informative and often amusing discursive talks which take place at Fovant Village Hall on the 4th Thursday of the month at 4pm, and on the 2nd Thursday of the month at Dinton Village Hall. It's an open invitation to ALL who may be interested (patients and others alike, wherever you live).  
[www.fovantvillage.com/health-well-being](http://www.fovantvillage.com/health-well-being)



## Dr Kinlin's Focus Sessions

Thur 12 February

**Dinton Village Hall 4 – 5pm**

Thur 26 February

**Fovant Village Hall 4 – 5pm**

**'Pain Management'**



CLICK or TAP  
to go back to  
CONTENTS  
PAGE



Tisbury

## EXCITING PODCAST

**FOUND GROWING  
in the Nadder Valley!**

**Stories, People and Events from  
Tisbury and the Cranborne Chase**

**tistalk.co.uk**  
With Mary Myers and Guests!



**SAVE up to 10%  
on your heating oil!**



**Join our BUYING CLUB!**

- IT'S FREE TO JOIN
- Independent of suppliers • Order for more than one location
- Pay the supplier direct • Local supplier and depots
- Fortnightly reminders with opportunities to place orders
- Over 1200 members buying 1.5 million litres annually!

FOR FREE REGISTRATION AND TO COMPARE RECENT PRICES VISIT

[www.nadder.oilbuyingclub.com](http://www.nadder.oilbuyingclub.com)



# Fovant Village Hall



## COFFEE MORNING

We'll be here for you



**Thursdays 10-11am**  
**Tea, Coffee, and Biscuits 50p**  
 Chat to friends and neighbours  
 Warm hall with wifi



Fovant Village Hall

# LIVE LOUNGE MUSIC

Fovant Village Hall - Sat 21 Feb - 6:30pm



The Kings of Lounge are a mostly acoustic band. On the evening they'll set a relaxed mood with their unique take on music from across the decades, creating the ideal atmosphere for mingling and conversation.

## £12

(Ticket price includes nibbles)

Bar available with a wide range of alcoholic & soft drinks (no BYO).  
 Card payments accepted

Tickets from Marilyn Willoughby  
[marilynann2011@gmail.com](mailto:marilynann2011@gmail.com)





Fovant

## TALK AND TROWEL MON 16 FEB 6pm

Do you love your garden?  
Oh good, we didn't *think* we were the only ones!  
If there are enough of us to make it work, we would like  
to set up a gardening group so that  
we can:

- Share skills and cuttings**
- Swap seeds**
- Find discount opportunities**
- Compare successes & learn from failures!**
- Organise visits to famous gardens (NGS/RHS  
etc) at discounted prices**
- Listen to visiting specialists**
- Enjoy chatting to like-minded people in our  
community**

We are going to start by finding out just how many  
people would be interested, how often they would  
like to meet and to hear suggestions of format.  
If you are keen, please join us at the Village Hall on  
**Monday 16<sup>th</sup> February at 6pm** and let's see if we  
can get Talk and Trowel up and running!



CLICK or TAP to go back  
to the CONTENTS PAGE



Sutton Mandeville

## GROW YOUR OWN

Rent a plot on Sutton Mandeville Allotments

Gardening  
is good for physical  
and mental  
wellbeing.  
You know  
where your  
vegetables  
come from and  
you save money  
at the till.

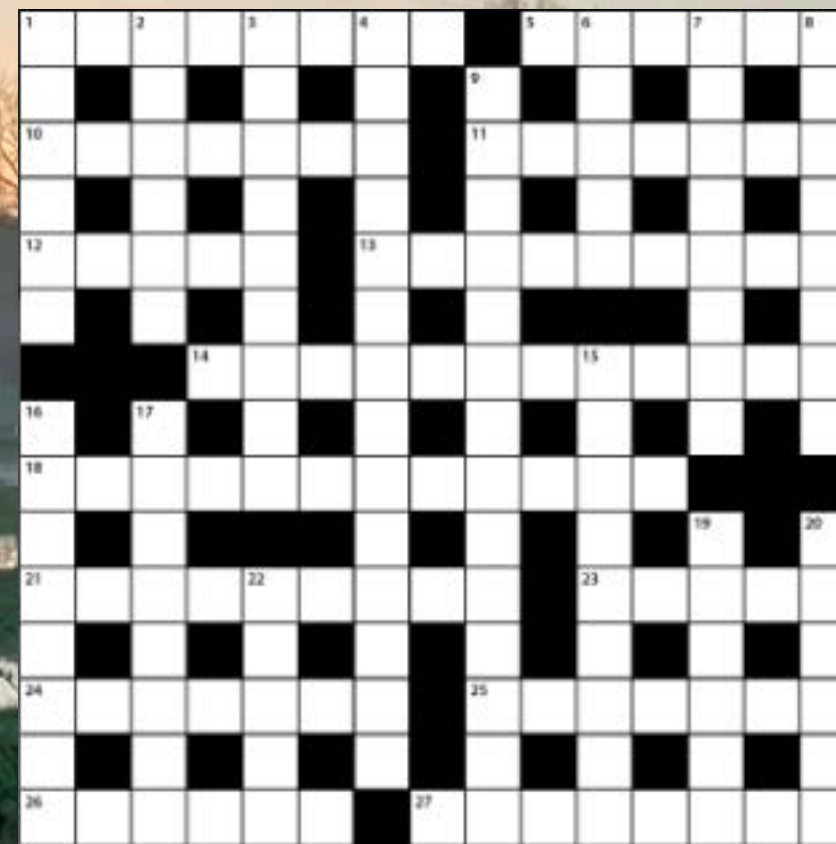
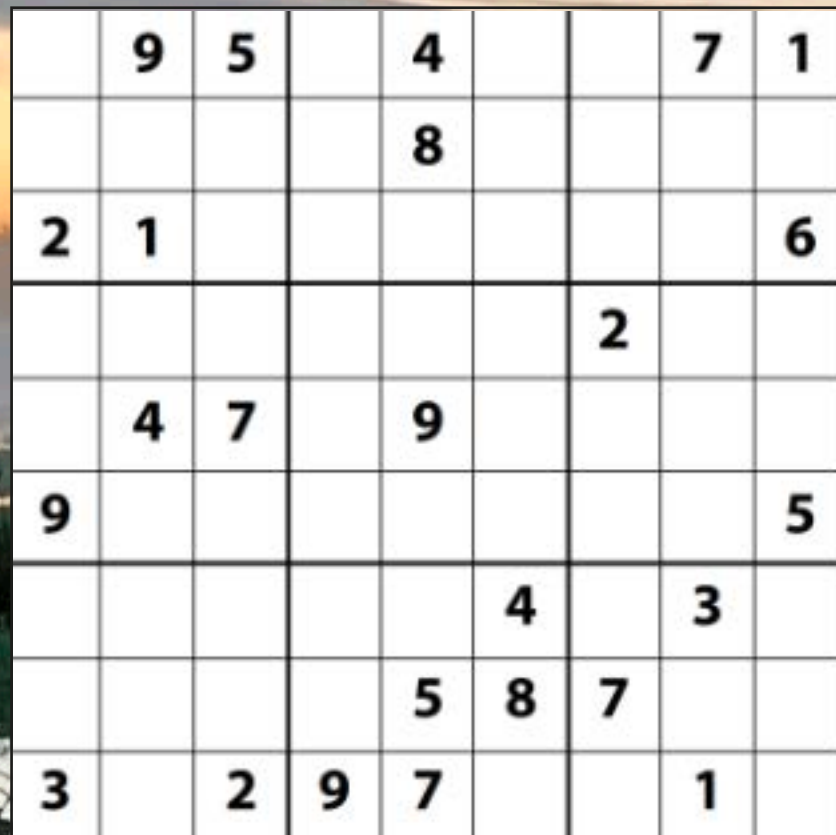
Apply today!  
Cost: £40pa  
for 7x15m plot  
(half plot £20pa)



**ENQUIRIES:  
JACK DEVERELL**

**MOBILE/TEXT:  
07899 793069**





**TO COMPLETE THESE PUZZLES PLEASE PRINT THIS PAGE ON YOUR PRINTER.**

- 1) Set your printer to print this page
- 2) Ensure your page is set to **LANDSCAPE** orientation.
- 3) Ensure your printing is reduced to fit your A4 sheet (**80%**). Do not print at 100%.

#### HOW TO PLAY SUDOKU

The objective of the puzzle is to complete the grid so each of the rows, columns and 3 x 3 sub-grids contains the numbers 1 to 9. The challenging part of the puzzle is that each number can only appear once per row, column, or sub-grid.



## February's Brain Gym

SOLUTIONS ON SPREAD 24

#### Across

- 1 William \_\_\_\_, editor of The Times newspaper from 1967 to 1981 (4-4)
- 5 \_\_\_\_ Central, a vast mountainous area in southern France containing several extinct volcanic cones (6)
- 10 Small family car first manufactured by Austin in 1973 and succeeded by the Metro and Maestro (7)
- 11 A Jewish title or form of address meaning "my great master" (7)
- 12 Of clothing, especially skirts, narrow at the top and widening evenly to a full hemline (1-4)
- 13 Inflammation of the lining of the stomach (9)
- 14 A language chosen as a medium of communication among speakers of different languages (6,6)
- 18 A "new town" on the river Tawd in west Lancashire (12)
- 21 Occurring in two forms within the same biological species (9)
- 23 Danish discount supermarket chain which opened in the UK in 1990 (5)
- 24 Roberto \_\_\_\_, manager of Manchester City FC following the dismissal of Mark Hughes (7)
- 25 Grunge rock band whose first album was Bleach in 1989 (7)
- 26 A member of a people of mixed Frankish and Scandinavian origin who settled in northern France from about AD 912 (6)
- 27 An ancient city state founded by the Phoenicians on the north African coast near modern Tunis (8)

#### Down

- 1 Nancy \_\_\_\_, American actress born Anne Frances Robbins in 1921 (6)
- 2 French term meaning "being discussed or expected" (2,4)
- 3 A bright silver-white metallic element, atomic number 12 (9)
- 4 Composer who had his first hit with Swanee, recorded by Al Jolson in 1920 (6,8)
- 6 \_\_\_\_ nectar, a humorous nickname for beer or lager, especially in Australia (5)
- 7 \_\_\_\_ for Boys, a book originally published in 1908, when it was written and illustrated by Robert Baden-Powell (8)
- 8 A heavy black-and-white breed of dairy cattle, having a high milk yield (8)
- 9 The most remote inhabited archipelago in the world, whose capital is Edinburgh of the Seven Seas (7,2,5)
- 15 British TV puppet character, occupation Superstar, who first appeared on the show TV-am in 1983 (6,3)
- 16 Masonry of uniform blocks in courses of equal height, the vertical joints placed over the middle of the blocks below (8)
- 17 A spring constellation of the northern sky, thought to resemble a small lion (3,5)
- 19 A tributary of the Saint Lawrence river that forms part of the boundary between the provinces of Quebec and Ontario (6)
- 20 A perennial south European herb, Levisticum officinale, with an odour and flavour similar to celery (6)
- 22 An Indian side dish of chopped vegetables, especially cucumber, in yoghurt (5)



CLICK or TAP to go back to the CONTENTS PAGE





DATE	1 February	8 February	15 February	18 February	22 February	1 March
	Presentation of Christ Candlemas	2nd Sunday before Lent	Sunday before Lent	Ash Wednesday	Lent 1	Lent 2

Lower Nadder Benefice Services

Barford St Martin	11.15 AAC EB	09.30 Mcw LAY	- - -	09.30 HC with Ashing EB	09.30 BCP PC MG	11.15 AAS -
Baverstock	- - -	- - -	10.00 AAC EB/ MG	- - -	- - -	- - -
Compton Chamberlayne	09.30 PC BH	- - -	- - -	- - -	- - -	09.30 PC <sub>T</sub> -
Dinton	09.30 AAC MG	- - -	- - -	- - -	09.30 Mcw EB	09.30 AAC -
Fovant	08.00 HC <sub>O2T</sub> EB	09.30 To Sutton -	- - -	- - -	09.30 PC MH	08.00 HC <sub>O2T</sub> -
Sutton Mandeville	16.00 AAS EB	09.30 Mcw EB	- - -	- - -	09.30 To Fovant -	- - -
Teffont Evias	- - -	11.15 AAC EB	- - -	- - -	- - -	- - -
Teffont Magna	- - -	- - -	- - -	- - -	11.15 AAC EB	- - -

Upper Nadder Benefice Services

Ansty	- - -	11.15 PC MH	- - -	- - -	11.15 AAC JN	- - -
Chicklade	- - -	- - -	- - -	- - -	- - -	- - -
Hindon	09.30 PC +RC	09.30 AAC BB	18.00 EBCP JN	18.00 HC with Ashing JN	09.30 PC JN	09.30 PC -
Chilmark	11.15 AAC TF	09.30 AAS JA	11.15 AAC JN	- - -	11.15 MP LAY	11.15 AAC -
Fonthill Bishop	17.00 EBCP JA	08.00 HCBCP TH	09.30 MBCP JA	- - -	- - -	17.00 EBCP -
Fonthill Gifford	08.00 HCBCP MH	11.15 MBCP JA	- - -	- - -	11.15 MBCP LAY	08.00 HCBCP -
Swallowcliffe	11.15 PC <sub>T</sub> MH	18.00 EBCP JA	08.00 HCBCP JN	- - -	11.15 MBCP LAY	11.15 PC <sub>T</sub> -
Tisbury	09.30 AAS JA	09.30 PC MH	09.30 18.00 PC Choral Evensong TM JA	10.00 HC with Ashing MH	08.00 09.30 HCBCP PC JN JP	09.30 AAS -

SERVICES

AAC	All Age Communion
AAS	All Age Service
BCP	Book of Common Prayer
CbE	Communion by Extension
CE	Choral Evensong (BCP)
CW	Common Worship
E	Evensong or Evening Prayer
FC	All Age Family Communion
HC	Holy Communion (said)
HC <sub>O2T</sub> /C	Order 2 Communion, traditional/contemporary

- M
- MP<sub>r</sub>
- PC
- PC<sub>T</sub>
- PC<sub>O2T</sub>
- PC<sub>O2T</sub>/C
- RS
- SoP
- SoW

Mattins or Morning Prayer  
Morning Praise  
Order 1 Communion (with hymns)  
Order 1 Communion,  
traditional language (with hymns)  
Order 2 Communion,  
traditional language  
(with hymns)  
Order 2 Communion,  
traditional/contemporary  
Reflective Servic  
Songs of Praise  
All Age Service of the Word

CLERGY

Lower Nadder Benefice	
BH	Ven Barney Hopkinson
EB	Rev. Elaine Brightwell
MG	Canon Michael Goater
MH	Rev. Mark Hayter
Upper Nadder Benefice	
JA	Canon Judy Anderson
JN	Rev. Jo Naish
TM	Tony Monds
JP	Joanna Percival
MH	Rev. Mark Hayter
BB	Barry Blackford
TH	Tim Hiller
TF	Tina Fox



Healing & Wholeness



Come to join us in the stillness, bringing with you any person or situation you wish to pray for that is near to your heart.

Wednesday February 11th, 4.00pm  
In the Upper Nadder Benefice

St Andrew's Chapel St John the Baptist Church, Tisbury



Jesus is the Light of the world. He says "Come unto me all you who are heavy laden and I will refresh you"

As we approach Lent let us pray for healing for our troubled world.



## Chocolate Hearts and Ashes



Happy Valentine's Day when it comes. It's good to celebrate love, whether with a gift of heart-shaped chocolates or with a quiet appreciation of those who bring love into our lives. Let's not be tyrannised by some ideal of romance. Love comes in all shapes and sizes: in romance, yes, but also in faithful companionship, affectionate friendship, an attentive neighbour, a caring cousin, a devoted mother. Maybe this year you could send a card to someone who might not expect it. Go on! Make someone's day.



This year the Church marks Ash Wednesday a few days later: with the placing of ashes on the forehead. Could there be any relationship between the brighter music of love and friendship and the sombre tones of Ash Wednesday, the beginning of Lent?

On Ash Wednesday, we are invited to remember our mortality, to acknowledge our vulnerability and to consider our dependence on something beyond ourselves. It is a day of humility.

The quality of humility is not especially popular these days; we often associate it with a rather unattractive sort of self-effacement. But humility is about so much more than that. The word itself comes from the Latin *humus*, meaning ground or soil. The church's ashing ritual is accompanied by the words: 'Remember that you are dust and to dust you shall return'. Humility doesn't mean grovelling in the dust but recognising our connection to it.

Remembering the ground from which we come and to which we return, brings a certain gravity. It puts both feet on the ground and encourages not apologies for who we are, but a realistic understanding of our limits. Knowing our limits makes room for a truer kind of attention. Remembering our mortality reminds us to tend to what matters most and

to cultivate, as Jesus encourages us to do, the fruit that will last. The awareness that our lives come to an end encourages us to love today and not put it off until tomorrow.

Love seems to grow best from the soil of humility. C.S Lewis

wrote: 'True humility is not thinking less of yourself; it's thinking of yourself less'. And Mother Theresa has written: 'Humility always radiates the greatness and glory of God'. Through humility we grow in love.

Lent may look from the outside like a killjoy season but consider this: whatever discipline we might adopt – traditionally prayer, fasting and charitable service – the invitation is always the same. We are invited to turn more fully to the Love that is always present, beneath the mindless, often self-centred, rush of everyday life.

And so, I wish you love – whether it comes wrapped in chocolate or marked with ashes. Ideally both!

**Julie Dunstan**



Barford St Martin



Burcombe

## TEA and CHATS

**Plenty of tea, coffee, cake and chat with many friends from our villages.**

**A talk by:  
THE WILTSHIRE BOBBY VAN TRUST**

**ALL WELCOME**

**Tuesday 17th February**  
2-4pm in St Martin's church.

**No charge – donations for the Bobby Van Trust and the Church.** Jenny Barrett  
[jennybarford@gmail.com](mailto:jennybarford@gmail.com)



Sutton Mandeville



**All Saints Church  
Sutton Mandeville**

## MONTHLY DRAW RESULTS



**NOVEMBER 2025**

**1st £40 — 12**

**2nd £20 — 111**

**3rd £10 — 92**

To join in please contact Kate Clutterbuck  
[kateclutterbuck5@gmail.com](mailto:kateclutterbuck5@gmail.com)



## February: From Snowdrops to Ashes

February often feels like a bridge between seasons — not quite winter but not yet spring. The days are still short, the mornings cold, and yet in churchyards, gardens and along hedgerows, the first brave snowdrops begin to appear. These small white flowers, pushing through frozen ground, are a gentle sign that change is already at work beneath the surface. In the Christian year, February is also a month of quiet turning. We move from the warmth of Christmas and Epiphany towards the more searching season of Lent. Along the way come several moments that invite us to pause, to celebrate and to reflect.

Midway through the month we mark Valentine's Day, often associated with cards, flowers, and romantic gestures. Behind the commercial gloss lies a deeper story of faithful love and self-giving. St Valentine is remembered as a priest who cared for the persecuted Church and bore witness to Christ through compassion and courage.

A few days later on February 17th comes one of the Church's most cheerful days: Shrove Tuesday. Traditionally the last day before Lent begins, it was a time to use up rich ingredients — eggs, milk, butter — before the fasting season. Hence our pancake suppers and races. There is joy in this day but also purpose. To be 'shriven' is to be forgiven. Shrove Tuesday invites us to prepare our hearts as well as our kitchens, to think about what we might lay

down and what we might take up in the weeks ahead.

The following day, the mood shifts. Ash Wednesday marks the beginning of Lent and with it a more solemn note enters our worship. Ashes are placed on our foreheads with the words, "Remember that you are dust, and to dust you shall return, turn away from sin and be faithful to Christ."

These words are not meant to depress us, but to remind us of what truly matters. Life is fragile. Time is precious. God's mercy is always offered.

Lent is often spoken of as a season of giving things up, but it is just as much a season of taking things on: taking on prayer, generosity, attentiveness and acts of kindness. It is a time to clear away what distracts us, so that we can listen more closely to God.

And so February in its own quiet way, teaches us that new life often begins in hidden places, and that the journey towards Easter begins with small, faithful steps.

As we move through this month, may we notice the signs of hope around us, cherish the people we love, and walk gently into Lent with open hearts and willing spirits.

**Rev. Elaine Brightwell**  
**Rector**  
**Lower Nadder Benefice**



St John the Baptist Church, Hindon

**St John Singers**

Regd. Charity No. 1169985

**God so loved the world**

Choral music for Lent

Works by Morley, Chilcott, Stainer,  
Purcell, Gibbons, Abbott & L'Estrange

**Andrew Post - Organ/Piano**  
**Stephen Abbott - Conductor**

Supporting church funds

Interval drinks, by donation

**Saturday 14th March 2026 at 7.30pm**

Tickets £15 from Kit & Caboodle, 62 High St, Salisbury,  
from Choir members, Hindon Village Shop,  
revdjoannanaish@gmail.com and on the door





## The Children's Society house collection boxes

The Children's Society

The annual house box collection is transferring to a new co-ordinator from this year going forward. Due to various reasons Sue Haddock has stepped down as the co-ordinator after nearly 10 years. However, the good news is that **Diane Wood** has kindly stepped into the role and she will be contacting all box holders in advance of the annual collection in November this year.

I would like to thank everyone who has supported both me and the society over the past years and I would like to wish Diane the best of luck for the future.

Sue Haddock



Fovant

## St George's 50/50 Lottery Club

### THE WINNING NUMBERS IN THE JANUARY 2026 DRAW:

**1st £35 — 95**  
**2nd £25 — 147**  
**3rd £15 — 97**

### THIS IS THE THIRD DRAW OF THIS 'LOTTERY YEAR'.

Very many thanks for your support in providing funds to the church to help with all these things that continually need attention.

**Liz Daw 01722 714362**  
**or liz.daw1@btinternet.com**



## Do you run a small business?

We have over 650 subscribers who just might want to know about you!

**ADVERTISE WITH US FOR 6 MONTHS** — Half page – £60 | Whole page – £120 | Double page spread – £180  
**ADVERTISE WITH US FOR A WHOLE YEAR** — Half page – £100 | Whole page – £200 | Double page spread – £300



### SUDOKU solution

8	9	5	6	4	2	3	7	1
7	3	6	5	8	1	9	4	2
2	1	4	7	3	9	8	5	6
1	5	8	4	6	3	2	9	7
6	4	7	2	9	5	1	8	3
9	2	3	8	1	7	4	6	5
5	7	9	1	2	4	6	3	8
4	6	1	3	5	8	7	2	9
3	8	2	9	7	6	5	1	4

### CROSSWORD solution

R	E	C	E	R	O	O	G	U	A	S	T	I	C	H
E	N	K	E	R	E	N	T	E	R	E	N	T	E	R
A	L	S	E	C	H	O	D	E	N	T	E	R	E	R
E	A	S	T	E	R	E	N	T	E	R	E	N	T	E
A	L	I	N	E	R	E	N	T	E	R	E	N	T	E
E	L	E	V	E	R	E	N	T	E	R	E	N	T	E
E	L	I	N	G	A	M	A	N	G	A	N	G	A	N
S	A	C	L	E	R	E	D	A	S	E	D	A	S	E
U	G	O	C	K	E	R	E	N	T	E	R	E	N	T
D	I	M	O	R	P	H	E	C	N	E	S	T	E	R
D	E	A	W	E	L	O	C	K	E	R	E	N	T	E
M	A	N	C	H	I	N	G	A	N	G	A	N	G	A
U	C	E	N	T	E	R	E	N	T	E	R	E	N	T
N	O	R	T	H	E	N	C	E	N	T	E	R	E	N

### Would you like to advertise your business but have no artwork?

We will design and produce your ad for FREE\*

\* Minimum order, half page for 6 months.

Design & Advertising:

Jan Kalinowski | [jan@villagebuzz.online](mailto:jan@villagebuzz.online)

mobile: 07881 288027

## Advertising and article submission deadline



### Friday 20 February

If you plan to submit ready-made advertising please ensure that the file is in the format of either a high resolution Acrobat PDF file or a high resolution JPEG (300ppi) file – thank you.

# VILLAGE BUZZ

A MONTHLY MAGAZINE FOR VILLAGES IN AND AROUND THE NADDER VALLEY

JANUARY 2026

## USEFUL INFORMATION

### **SALISBURY**

#### **HOUSEHOLD RECYCLING CENTRE**

**SUMMER (1 April - 31 October)**

**9.00am - 4.00pm**

**CLOSED ON THURSDAYS**

**WINTER (1 November to 31 March)**

**10.00am - 4.00pm**

**CLOSED ON THURSDAYS & FRIDAYS**

Stephenson Road,  
Churchfields Industrial Estate SP2 7NP  
Tel: 01722 322309

#### **MEDICAL**

##### **SPRING ORCHARD SURGERY**

Telephone: 01722 714789  
Spring Orchard Surgery, High Street, Fovant,  
Salisbury, Wiltshire, SP3 5JL

##### **OLD ORCHARD SURGERY**

Telephone: 01722 744775  
Old Orchard Surgery, South Street, Wilton,  
Salisbury, SP2 0JU

##### **SALISBURY DISTRICT HOSPITAL**

Odstock Rd, Salisbury SP2 8BJ  
Tel: 01722 336262

##### **NICHOLSON AND BOUGH CHARITY FOR BARFORD ST MARTIN RESIDENTS**

**Telephone: 0797 337 8282**

or write in strict confidence to:  
Clerk to the Trustees, 2 The Poplars,  
Barford St Martin, SP3 4AR

#### **THEATRES/ART**

##### **Salisbury Playhouse**

Malthouse Lane, Salisbury SP2 7RA  
Tel: 01722 320333

##### **Salisbury City Hall**

Malthouse Lane, Salisbury SP2 7TU  
Tel: 01722 434434

##### **Salisbury Arts Centre**

Bedwin St, Salisbury SP1 3UT  
Tel: 01722 321744

##### **Odeon Cinema Salisbury**

New Canal, Salisbury SP1 2AA  
Tel: 0333 014 4501

### **WILTSHIRE COUNCIL**

#### **HEAD OFFICE**

Bythesea Road, Trowbridge, Wiltshire BA14 8JN

#### **BOURNE HILL**

Salisbury, Wiltshire, SP1 3UZ  
Council offices are open Monday to Friday from  
8.30am until 5.30pm

#### **WILTSHIRE COUNCIL SERVICES**

##### **Worried about a child?**

If you believe a child or young person is at risk  
of significant harm, neglect or injury, report  
your concerns to the Multi-Agency  
Safeguarding Hub (MASH) on 0300 4560108.

##### **Adult Care**

Tel: 0300 456 0111  
adviceandcontact@wiltshire.gov.uk

##### **Benefits**

Tel: 0300 456 0110  
benefits@wiltshire.gov.uk

##### **Blue Badges**

Tel: 01225 713002  
bluebadge@wiltshire.gov.uk

##### **Building Control**

Tel: 0300 456 0113  
buildingcontrol@wiltshire.gov.uk

#### **CHILDREN'S SERVICES**

##### **Early Help**

Tel: 01225 718230

##### **Children's Services**

Special Educational Needs and Disability  
(SEND)

Tel: 01225 757985

##### **Children's Services Social Care**

Tel: 01722 438165

#### **COMMUNICATIONS**

(press and media related enquiries)  
Tel: 01225 713115 or 01225 713370  
communications@wiltshire.gov.uk

##### **Corporate Investigation Team**

01249 706456  
investigations@wiltshire.gov.uk

#### **Council Tax**

Tel: 0300 456 0109  
counciltax@wiltshire.gov.uk

#### **Elections**

Tel: 0300 456 0112  
elections@wiltshire.gov.uk

#### **Early Years and Childcare**

Tel: 0300 003 4561  
earlyyears@wiltshire.gov.uk

#### **Fraud Hotline (24 hours)**

Tel: 01249 706456

#### **Highways**

Tel: 0300 456 0105 or to report  
non-urgent highway defects.

#### **Homes4Wiltshire (housing register)**

Tel: 0300 456 0104  
homes4wiltshire@wiltshire.gov.uk  
Housing Options/Homelessness  
homeless@wiltshire.gov.uk  
Tel: 01722 434233

#### **Parking**

Tel: 01249 706131  
parking@wiltshire.gov.uk

#### **Pest Control, Noise and Pollution, Environmental Health**

Tel: 0300 456 0107  
customerservices@wiltshire.gov.uk

#### **Planning**

Tel: 0300 456 0114  
developmentmanagement@wiltshire.gov.uk

#### **Rubbish and Recycling**

Tel: 0300 456 0102  
customerservices@wiltshire.gov.uk

#### **Schools Admissions**

Tel: 01225 713010  
admissions@wiltshire.gov.uk

#### **School Transport**

Tel: 01225 712852  
educationtransport@wiltshire.gov.uk

#### **Can't find the service you require?**

**Contact Customer Services**  
Tel: 0300 456 0100



CLICK or TAP to go back  
to the CONTENTS PAGE