



VILLAGE BUZZ



A MONTHLY MAGAZINE FOR VILLAGES IN AND AROUND THE NADDER VALLEY, SALISBURY, WILTSHIRE

JANUARY 2026



**Wishing all our readers a very happy
and peaceful New Year**

2026



We combine traditional building skills, passed down through generations, with modern day techniques and materials to fulfil your lifestyle aspirations.

That's why we make great buildings that stand the test of time. Buildings made for living. A place that people call home. Not just for now, but for generations to come.

MOULDING

THE COUNTRY HOUSE BUILDERS

01722 742228 | thecountryhousebuilders.co.uk



This is a PDF file with INTERACTIVITY.
Simply **CLICK** or **TAP** any email, web address or page link.



Contents page

Just **click** or **tap** on any of the panels below to take you to the relevant two page spread.



Species of the month
Fairy Shrimps
Peter Thompson
spread 3



Hindon builder's
transformation powers
a rosy future
spread 12



LOCAL CINEMA
Donhead St Mary
spread 7



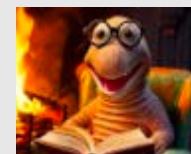
RECYCLE your real
Christmas Tree
spread 14



POETRY:
Ring Out, Wild Bells
Lord Alfred Tennyson
spread 8



Brain Gym
spread 15



Bookworm Corner
spread 10



Nadder Valley Benefice
Church Services
spread 16



TO PRINT A SPREAD: Village Buzz has a new page numbering format that ties in with the spread you see on your screen. Each spread now has only one 'page' number (eg these 2 pages are now spread 2), so to print out a particular spread simply specify the spread number at the bottom.

Dear Reader: Do you have an interesting story to tell or a hilarious tale or memorable experience to share? Is there a special poem that moves you? Or do you have a fascinating family history or a passionate interest that you would like to spread the good word about? **Email us** and we will create an attractive article in Village Buzz for you and our readership to enjoy reading together — Just send me your text and any images to: jan@villagebuzz.online and we'll do the rest.

Species of the month

Fairy shrimps (*Chirocephalus diaphanus*) Peter Thompson, Barford.

This is time of year when the familiar old Christmas decoration boxes are packed up once again and the fairy from the top of the tree is placed carefully away, not to reappear for another year.

But there are other 'real' fairies to take its place at this time of year, not high up on a tree, but swimming around in shallow rain-filled pools.

The remarkable little fairy shrimp, which at its full adult size only registers a length of 3cm long, can hatch within 48 hours of a pond filling and under ideal conditions will begin to breed within 3 weeks.

Fairy shrimps have an extremely quick life-cycle and they need to, as they choose very specific places to breed. The important fact about the water areas where fairy shrimps choose to breed, is that they will at some point dry out during the year. These temporary pools never become colonised by fish or other predators that would of course soon munch up such small, vulnerable prey.



Once the adults hatch out, males will latch on to females with their 'claspers', fertilising the eggs. Females then carry the fertilised eggs, which can vary in number from 10 to 150, in an egg sac just beneath her thorax for several days, before releasing them to sink to the bottom of the pool.

Now, here is the clever bit! The eggs are able to survive quite happily when the pond dries out, as they simply lie dormant until the next substantial re-wetting event fills up the area with water once again. However, not all the eggs will hatch out when the rain arrives, as some eggs will remain in a dormant state so that if conditions deteriorate and the pond dries out too quickly to allow for a successful breeding

attempt, some eggs will survive to try their luck at a later date.

Although the normal period of egg dormancy is usually between six to ten



CONTINUED



months, eggs have been hatched in a laboratory after a period of fifteen years!

Fairy shrimps are translucent, meaning that light passes through their bodies and they have red tips to their abdomen. They lack a carapace, a body covering shell, that other shrimps have. They swim on their back, with their head curving downward, using eleven pairs of leaf-like legs fringed with bristles that are constantly moving. They have two black stalked eyes and two pairs of antennae, the second pair in the males are modified 'claspers' to latch onto females during mating.

The two 'stronghold areas' for fairy shrimps are Hampshire's New Forest and Wiltshire's Salisbury Plain, but they can also be found on the edge of Dartmoor in Devon, in parts of the Sussex Weald, as well as in Oxfordshire, East Anglia and South Wales. Their northern limit is around the Humber estuary across to northern Wales.

The Salisbury Plain fairy shrimps have an interesting relationship with the army. Shells blasts create craters and huge rumbling

tanks leave behind massive ruts, both of which fill up with water and form the ideal habitat for these delicate little creatures. In fact, it has been shown that the eggs can be transported around by tanks, contained in the mud on the tank tracks – a distributing job that would normally have been done by deer or cattle in the past!

The best time to search for shrimps is about 4 weeks or so after the area has refilled with water. So, it might well mean that during this New Years Day walk, you suggest that every-one goes on a 'fairy' hunt – that should tear the children away from their new toys!!

****Fairy shrimps are classified as vulnerable in the British Red Data Book, meaning that they are fully protected in the UK as a Species of Conservation Concern. So just look at them and don't catch them!! — PT**

Peter Thompson lives in Barford St. Martin and has worked in conservation and farming all his life. He is Chair of the Salisbury & District Natural History Society and would be delighted if readers joined either the society's Facebook page or the society itself – or indeed both! If you are interested, please see details on the right.

Fovant Youth Club, High St, Fovant SP3 5JL

**HALL
FOR HIRE**

**AVAILABLE
FOR EVENTS
MEETINGS
CHILDRENS'
PARTIES**

**ROOM
FOR UP TO
60 PEOPLE**

**WIFI
PROJECTOR
TABLES, CHAIRS
KITCHEN &
ACCESSIBLE
TOILETS**



**INCLUDING SMALL GARDEN
WITH SOME OFF-ROAD PARKING**

Contact Jan on 01722 714342

SALISBURY & DISTRICT NATURAL HISTORY SOCIETY



REGULAR FIELD MEETINGS & INDOOR TALKS

Founded in 1952, the society studies and records the natural history of Salisbury and the surrounding area.

No expertise is needed to join us!
Everyone with an interest in nature and the countryside is welcome.

Annual subscription is only £10
Family membership – £15
Junior membership – Free

So, if you would like to find out more about the wildlife in your local area, and meet friendly, like-minded people, go to:

www.salisburynaturalhistory.com



www.facebook.com/groups/salisburynaturalhistorysociety



**CLICK or TAP to go back
to the CONTENTS PAGE**

Lawn care to the highest possible standards

Get an INSTANT, no obligation quote by using our online lawn measuring tool in 3 easy steps:

[GET INSTANT QUOTE](#)

- 1 Enter your postcode
- 2 Outline your lawn
- 3 Submit your details



What makes Lawntech stand out from the crowd?

- 🌿 **A track record of over 30 years experience, delivering consistent professionalism**
- 🌿 **Highly qualified and accomplished technicians with over 130 years of combined experience**
- 🌿 **Offering a sustainable approach to lawn care, using semi organic fertilisers. Fully organic treatment programme available**



FREEPHONE 08000 665 465

Free to call - landlines and mobiles

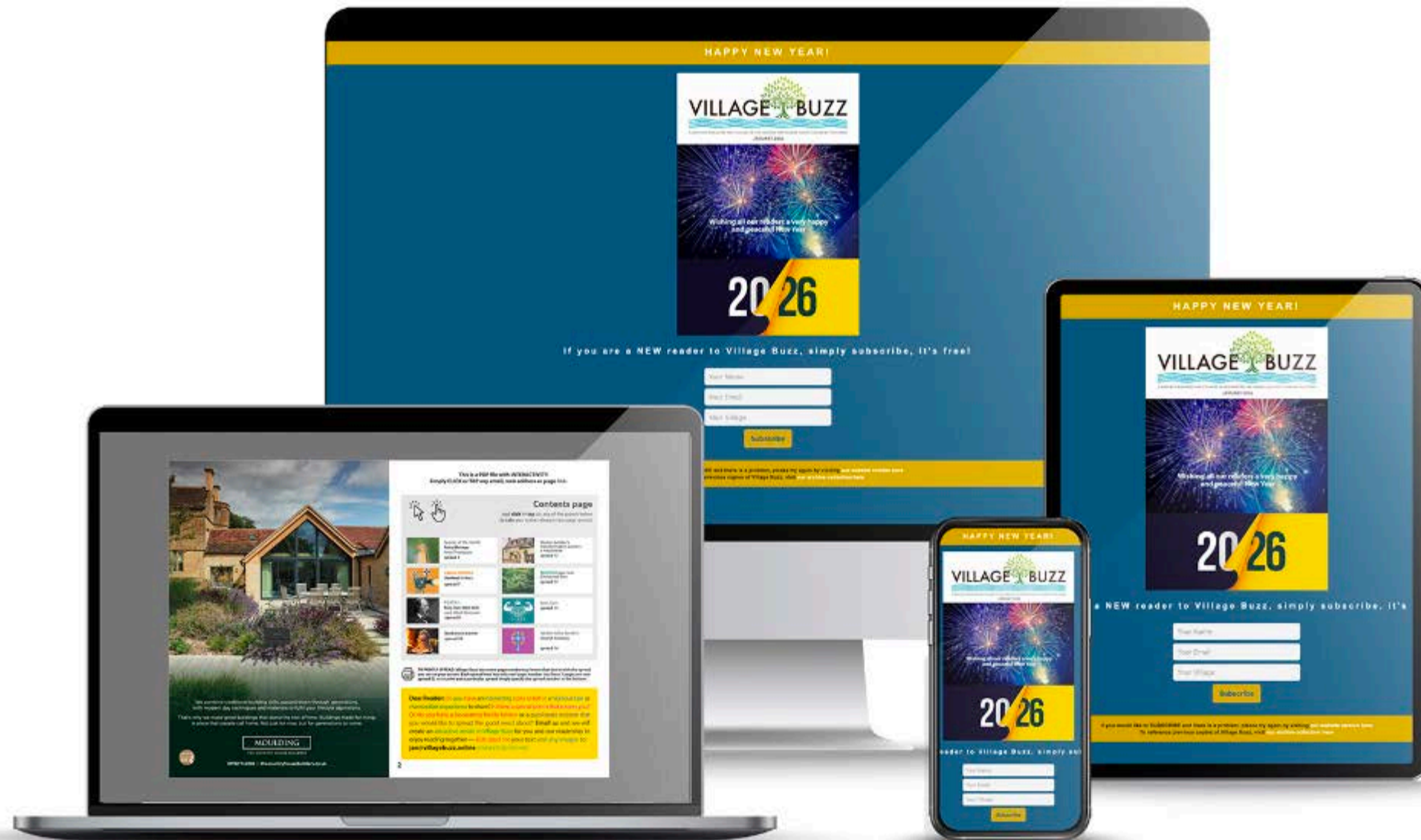
info@lawn-tech.co.uk

www.lawn-tech.co.uk



Lawntech

If you run a business you'd like our readership to know about, let us know.



jan@villagebuzz.online | gill@villagebuzz.online

villagebuzz.online
because that's where we are – online



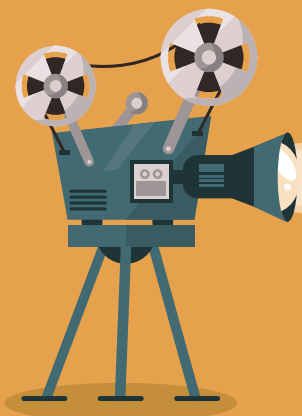
Donhead St Mary



NOT TO BE MISSED



Bishopstone



Moviola Cinema

Donhead St Mary

Donhead St Mary Village Hall, Church Hill,
Donhead St Mary, SP7 9DQ.
Doors open at 6.30pm and the film
starts at 7.15pm.

Tickets are available from Ludwell Village Shop
from 11.00am.

If you would like to reserve your tickets online,
please [click here](#).

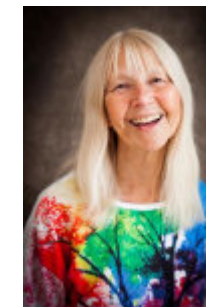
Unfortunately, we have had to add a small booking fee to
cover the cost of this service.

The Ballad of Wallis Island 12a 8 January 2026



The Ballad of Wallis Island follows Charles (Tim Key), an eccentric lottery winner who lives alone on a remote island and dreams of getting his favorite musicians, Mortimer-McGwyer (Carey Mulligan and Tom Basden) back together. His fantasy quickly turns into reality when the bandmates and former lovers accept his invitation to play a private show at his home on Wallis Island. Old tensions resurface as Charles tries desperately to salvage his dream gig.

Brenda Read-Brown



BUT I HAVEN'T FINISHED YET!

Join performance poet Brenda Read-Brown
in a playful celebration of growing older

A show to amuse and delight anyone
who is older than they were yesterday

An Evening of Entertainment at
Bishopstone Village Hall, SP5 4AA
Saturday 24th January 2026 at 7pm for 7.30pm

Tickets £12.50 to include first drink and canapés

Booking essential

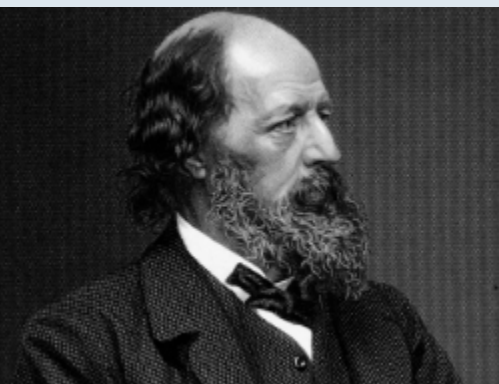
Anne Stutchbury annewheelwright@gmail.com

Sarah Seal theseal1@outlook.com

In aid of St Johnthe Baptist Church Bishopstone Roof Appeal

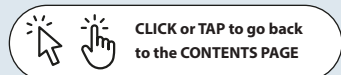


CLICK or TAP to go back
to the CONTENTS PAGE



Alfred, Lord Tennyson (1809–1892) was one of the most celebrated English poets of the Victorian era and served as Poet Laureate for more than 40 years. Born in Lincolnshire to a large and troubled family, he showed literary talent early and published his first poems as a teenager. His close friendship with Arthur Hallam, whose sudden death deeply affected him, became the emotional heart of much of his work—most famously *In Memoriam A.H.H.*

Tennyson's poetry, marked by musical language and themes of loss, heroism, nature and faith, brought him great popularity. Works such as *The Lady of Shalott*, *Ulysses*, *Idylls of the King*, and "The Charge of the Light Brigade" cemented his status as the poetic voice of the Victorian age. Ennobled as Baron Tennyson in 1884, he became the first English poet to be raised to the peerage. He died in 1892 and was buried in Poets' Corner at Westminster Abbey.



"Ring Out, Wild Bells" is a poem by Alfred, Lord Tennyson. Published in 1850, the year he was appointed Poet Laureate, it forms part of *In Memoriam*, Tennyson's elegy to Arthur Henry Hallam, his sister's fiancé who died at the age of 22.

Ring Out, Wild Bells

LORD ALFRED TENNYSON

Ring out, wild bells, to the wild sky,
The flying cloud, the frosty light:
The year is dying in the night;
Ring out, wild bells, and let him die.
Ring out the old, ring in the new,
Ring, happy bells, across the snow:
The year is going, let him go;
Ring out the false, ring in the true.
Ring out the grief that saps the mind
For those that here we see no more;
Ring out the feud of rich and poor,
Ring in redress to all mankind.
Ring out a slowly dying cause,
And ancient forms of party strife;
Ring in the nobler modes of life,
With sweeter manners, purer laws.
Ring out the want, the care, the sin,
The faithless coldness of the times;
Ring out, ring out my mournful rhymes
But ring the fuller minstrel in.
Ring out false pride in place and blood,
The civic slander and the spite;
Ring in the love of truth and right,
Ring in the common love of good.
Ring out old shapes of foul disease;
Ring out the narrowing lust of gold;
Ring out the thousand wars of old,
Ring in the thousand years of peace.
Ring in the valiant man and free,
The larger heart, the kindlier hand;
Ring out the darkness of the land,
Ring in the Christ that is to be.



Enter the Stars Appeal Christmas Raffle to win £2,500

Help make a difference to the lives of patients, their families and the NHS staff who care for them at Salisbury Hospital by entering the Stars Appeal's Christmas Raffle to win £2,500.

Lucky entrants could win the top prize, kindly sponsored by Wilsons Solicitors, a second prize of £500, sponsored by FJ Chalke, a third prize of £250, or other cash prizes.

Money raised will go towards the £2million that the Stars Appeal, Salisbury Hospital's Charity, aims to raise this year to fund the charity's work supporting wards and departments across the hospital.

To enter online or to find out more visit www.starsappeal.org/event/christmas-raffle-2025/

Tickets are also available in the hospital at the Stars Appeal Bookshop and from bucket collectors, or by contacting the Stars Appeal on 01722 429005 or emailing info@starsappeal.org

Raffle tickets must be returned to the Stars Appeal by **MONDAY 5TH JANUARY, 2026**. Online entries close at 11.59pm on Sunday 4th January. The draw takes place on January 9th and the winners will be contacted and announced on the charity's website.

www.starsappeal.org/event/christmas-raffle-2025





EST. 2004

COMPTON SMITH

INTERIORS

- Interior decorating consultancy.
 - Bespoke curtains, blinds and upholstery.
 - Suppliers of well-known specialist paints.
 - Extensive fabric & wallpaper library.
- Farrow & Ball, Edward Bulmer, Little Greene, Pierre Frey, Colefax & Fowler, Fermoie, Lewis and Wood, Sanderson Design Group and many more designers.



Mondays to Thursdays: 08.30 - 17.30
 Fridays: 08.30 - 17.00 Saturdays: 09.30 - 13.00
 Tel: +44 (0)1747 850150 info@comptonsmith.co.uk
 10d Wincombe Business Park, Shaftesbury, Dorset, SP7 9QJ

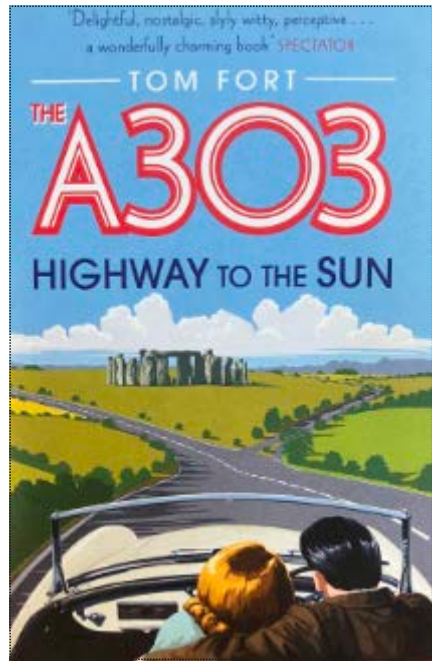
WWW.COMPTONSMITH.CO.UK



CLICK or TAP to go back
to the CONTENTS PAGE

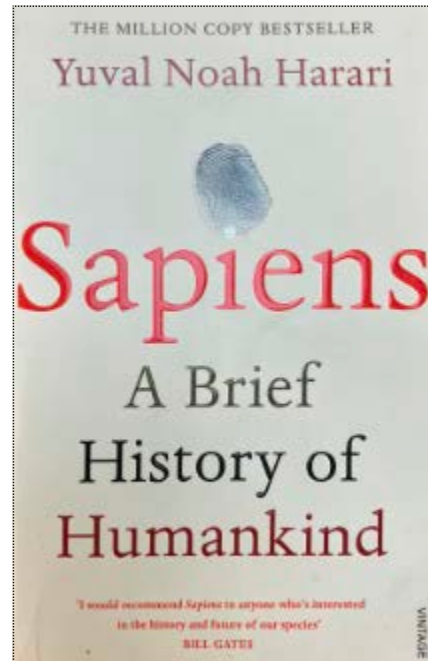
Welcome to Bookworm Corner!

Happy New Year to everyone as a sparkling 2026 starts on its twelve-month journey. The frenzy and madness of Christmas has disappeared but it's not quite time to take down all the decorations yet, so let's settle down with the first of a new selection of books to take us through the year. This month, two of them are entertaining, one is slightly more serious but readers will learn something from all three. Bookworm hopes you will enjoy them all!



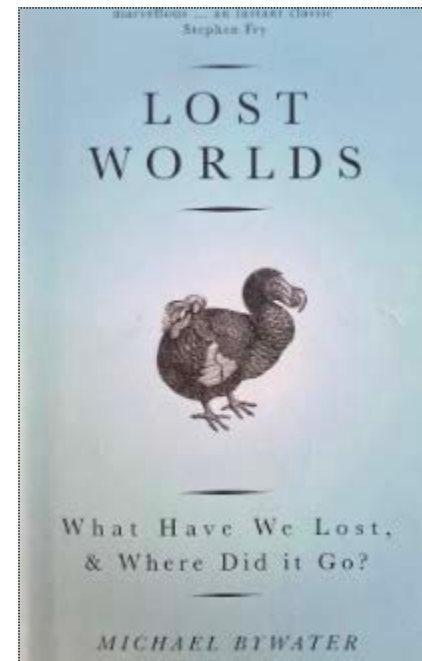
The A303 Highway to the Sun
by Tom Fort
ISBN 978-0-85720-326-7

For those of us who have spent many hours driving along this main route to the West Country, this book will be a revelation. Filled with stories, history, geography and culture, the book tells a fascinating tale of this old road, recalling the times when the journey was an adventure and not just about 'getting there'. It is an affectionate, informative and humorous look at the A303 with which drivers have long had a love-hate relationship and although it was first published in 2012, it is still a relevant and entertaining read.



Sapiens
by Yuval Noah Harari
ISBN 978-0-099-59008-8

As the book's subtitle suggests, this is a brief history of humankind. This bold and provocative book explores who we are, how we got here and where we are going. It is a thrilling account of our extraordinary story – from insignificant apes to rulers of the world – and gives the reader a sense of perspective on just how briefly we've been on our planet. It will make you think about and look at the world we've created in a startlingly different way. This volume is the first of a trilogy the author has written about humanity and where it is going.



Lost Worlds
by Michael Bywater
ISBN 1-86207-701-0

This wonderful book is an alphabetical tale of things we Brits have lost over the years. From Brylcreem to Mister Golly to Walrus moustaches to Joan the Wad and Pop Goes the Weasel, you will chuckle your way through this enjoyable miscellany of things we have lost and where they went. Embracing cosmology, chocolate bars, dogs and galoshes along the way, it finds humour and wit in everything it describes, balanced by a gentle yearning for all things gone before and now vanished and forgotten. Brilliant.



Dear Reader: If you have read a book that captured your imagination and you think our readers might enjoy too, then Just send us your name, the title of the book, and author's name and we'll do the rest.
jan@villagebuzz.online



Compton Chamberlayne

Local designer can make your business look good!

07881 288027
jan@septemberdesign.co.uk

amazing!





Teasel
Furniture Makers

Handmade
Bespoke
Cabinetry

Please contact us with any project enquiries.

07561 091 252
sam@teaselfurnituremakers.co.uk
www.teaselfurnituremakers.com
teaselfurnituremakers
Manor Farm, Sutton Mandeville, SP35NL






Boiler Servicing & Maintenance

BREAKDOWNS | REPAIRS | OIL | GAS | LPG

Mark Benfield

07974 249287

mark@mabheatingservices.co.uk

**YOUR LOCAL FULLY QUALIFIED
PLUMBER AND HEATING ENGINEER**

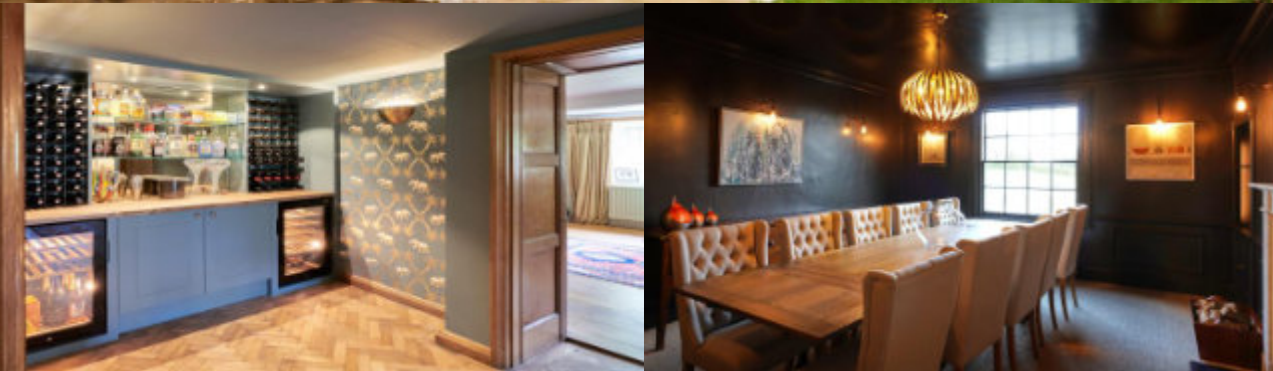
Over 30 years experience

- Gas & Oil
- Plumbing
- Heating
- Boiler & Cooker Servicing

No call out charge
Same day and emergency service available
Please contact Harvey on 07767887788
or contactrcm@gmail.com

Gas Safe Registration no 133743





Exciting new era begins for local builder with new owner and branding

After 40 years of dedication, challenges, and triumphs, Phillip Parsons has handed over the reins of Hindon-based building contractors, PF Parsons Ltd.

We ask his reasons for such a momentous decision.

You've been involved in the construction industry for most of your life, how do you feel about passing the baton of a business that you built from scratch?

Phillip: What began in 1985 with a vision and a lot of hard work, is now a business I am incredibly proud of, largely down to a terrific workforce, longstanding and loyal customers and all our supply partners.

As I step into a new chapter, I am confident that a new generation of leadership will carry this legacy forward with the same integrity, customer focus and quality our customers have come to expect.

Who has taken over the company?

Phillip: I'm delighted to introduce **Simon Burt** as the new owner of the business. I've known Simon for the past 12 years and his background and past experience of working domestically and internationally, equips him with the critical tools to guide the company into its next phase of growth. Simon has been a member of the Chartered Institute of Building since 2012 and has worked for both small to large contractors in the UK, Dubai and the Kingdom of Bahrain.

This culmination of experience will help underpin his commitment to continue the legacy of the past 40 years and to guide the business safely into the future.

Are you retiring completely?

Phillip: I'm not stepping away completely from the business and will be retained as a consultant, providing assistance to make this a successful transition.

We ask the new owner:

Simon, you follow in distinguished footsteps!

Simon: I do indeed! After 40 successful years under the leadership of Phillip, it's a privilege to take the helm of such a respected and established building and construction company with such a strong legacy of craftsmanship, quality and customer service.

As a Chartered Builder I'm fully committed to upholding both the standards of the Chartered Institute of Building, along with the high standards our customers have come to expect, while also exploring fresh opportunities for innovation and growth.

Last word?

Simon: Our mission remains the same: to deliver exceptional results, build lasting relationships and make every project something we can all be proud of.



Fovant



Dinton

A Doctor Explains.....

Dr Lindsay Kinlin has expanded her successful and very well received talks on various medical issues. Dinton has also now agreed to host these informative and often amusing discursive talks which take place at Fovant Village Hall on the 4th Thursday of the month at 4pm, and on the 2nd Thursday of the month at Dinton Village Hall. It's an open invitation to ALL who may be interested (patients and others alike, wherever you live).
www.fovantvillage.com/health-well-being



Dr Kinlin's Focus Sessions

Thur 8 January

Dinton Village Hall 4 – 5pm

Thur 22 January

Fovant Village Hall 4 – 5pm

'Fits, Faints & Funny Turns'

We will be talking about collapse and its possible causes



CLICK or TAP
to go back to
CONTENTS
PAGE



Tisbury

EXCITING PODCAST

FOUND GROWING
in the Nadder Valley!



**Stories, People and Events from
Tisbury and the Cranborne Chase**

tistalk.co.uk
With Mary Myers and Guests!



**SAVE up to 10%
on your heating oil!**



Join our BUYING CLUB!

- IT'S FREE TO JOIN
- Independent of suppliers • Order for more than one location
- Pay the supplier direct • Local supplier and depots
- Fortnightly reminders with opportunities to place orders
- Over 1200 members buying 1.5 million litres annually!

FOR FREE REGISTRATION AND TO COMPARE RECENT PRICES VISIT

www.nadder.oilbuyingclub.com



Recycle your Christmas tree for

Salisbury Hospice Charity

and other local charities

Collecting between 9th - 11th January

We welcome donations in return for the collection and recycling of your real Christmas tree

Register your tree by 5th January



Kindly sponsored by
Sampson Coward
SOLICITORS

SCAN ME



www.charityxmastreecollection.com

Salisbury Hospice Charity. Registered Charity No. 1123314. Registered Office: Salisbury Hospice Charity, Odstock Road, Salisbury, SP2 8BJ.



Evelyn loses it in Tisbury!

I started my Slimming World group in Tisbury because I know first-hand how powerful the right support can be.

Before I joined Slimming World, I felt

stuck — like I was watching life from the sidelines. My confidence was low, and food and wellbeing felt heavy and complicated. I carried emotional weight as well as physical, and didn't realise how much it was holding me back until I found a place where change felt possible. That place was Slimming World, and since joining I've lost over three stone!!

...since joining I've lost over 3 stone...

My Slimming World group in Tisbury is a warm, welcoming place where everyone is treated with kindness, respect and understanding. It's a truly supportive

environment where you'll never feel judged — just encouraged and listened to. Everything shared in group stays confidential, so you can feel safe being open about your journey, your challenges and your successes. You're never doing

this alone — we're very much a team, all working towards healthier, happier lives at our own pace. What have you got to lose, apart from weight?!

SlimmingWorld

TISBURY

HINTON HALL, CHURCH STREET

MONDAY 7PM

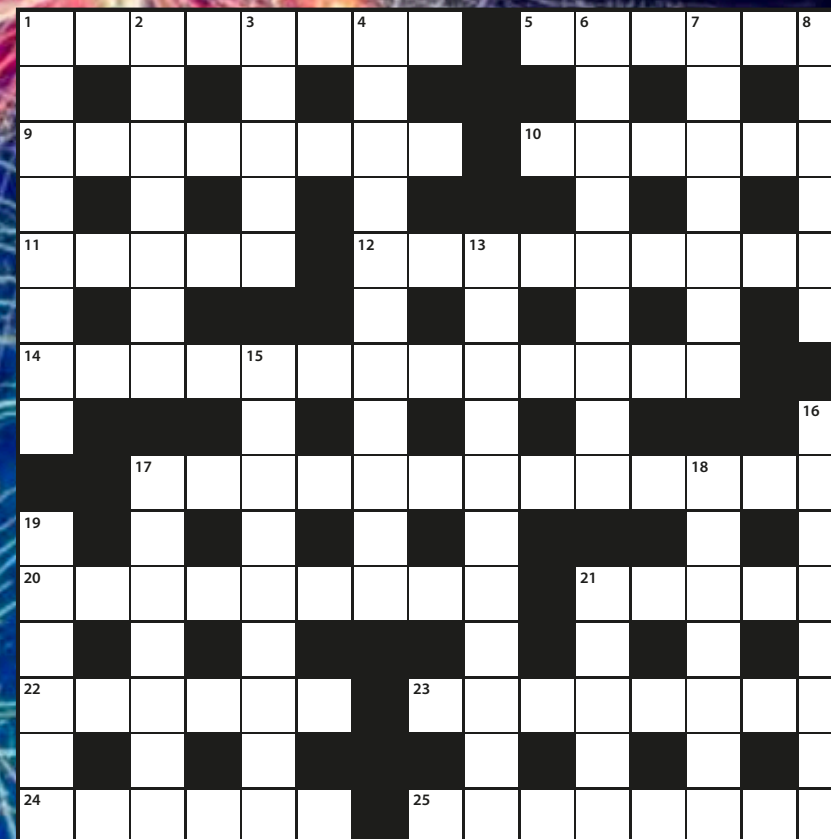
EVELYN - 07825 556871



real food, real support, real results

feel
real
good





TO COMPLETE THESE PUZZLES PLEASE PRINT THIS PAGE ON YOUR PRINTER.

- 1) Set your printer to print this page
- 2) Ensure your page is set to **LANDSCAPE** orientation.
- 3) Ensure your printing is reduced to fit your A4 sheet (**80%**). Do not print at 100%.

HOW TO PLAY SUDOKU

The objective of the puzzle is to complete the grid so each of the rows, columns and 3 x 3 sub-grids contains the numbers 1 to 9. The challenging part of the puzzle is that each number can only appear once per row, column, or sub-grid.



January's Brain Gym

SOLUTIONS ON SPREAD 19

Across

- 1 Carthaginian general in the Second Punic War who crossed the Alps with 40,000 men and defeated the Romans (8)
- 5 A multiple race competition in track cycling, with points being awarded for performance in each (6)
- 9 A large 17th- or 18th-century bowl, usually of silver, fluted and scalloped, for cooling drinking glasses (8)
- 10 Military slang for anti-aircraft artillery or fire (3-3)
- 11 Bingo, especially when played for money (5)
- 12 Durable aromatic timber from various large evergreen conifers, used in shipbuilding, fencing, furniture etc (9)
- 14 Violinist who became President of the Elgar Society in 1983 (6,7)
- 17 The birthplace of Coronation Street actress Thelma Barlow (13)
- 20 ___ Williams, writer of the 1947 play A Streetcar Named Desire (9)
- 21 In Greek mythology, a deity or nymph of the woods (5)
- 22 A first-magnitude star in the constellation Aquila, and the twelfth brightest in the sky (6)
- 23 In art, on fresh or moist plaster (8)
- 24 A method of creating a pattern in textiles during colouring, by binding or knotting parts of the fabric (3-3)
- 25 A sleeplike state in which the mind responds to external suggestion and can recover forgotten memories (8)

Down

- 1 John ___, presenter of the BBC TV quiz show Mastermind in 2003 (8)
- 2 Name of the former four-storey House on London Bridge, the earliest documented prefabricated building (7)
- 3 A tributary of the river Rhone in France, which joins the river Drac in Grenoble (5)
- 4 A globular cloud forming at a height of about 2400 to 6000 metres (11)
- 6 Ellen ___, yachtswoman who broke the world record for the fastest solo circumnavigation of the globe in 2005 (9)
- 7 Native or resident of the Gem State in USA (7)
- 8 Literally 'exalted gate' in Japanese, a title given by foreigners to the Emperor of Japan (6)
- 13 The Deputy Leader of the Labour Party from 1980 to 1983 (5,6)
- 15 American frontier town on the Santa Fe Trail, known as 'The Sodom of the West' (5,4)
- 16 Rock band who released the single Riders on the Storm in 1971 (3,5)
- 17 A large aquatic mammal of tropical coastal waters and rivers, with paddle-like flippers and tail (7)
- 18 Poem by Alfred Lord Tennyson which includes the line 'To strive, to seek, to find, and not to yield' (7)
- 19 Royal family which ruled Scotland from 1371 to 1714 (6)
- 21 Roberto ___, Panamanian four- weight world champion boxer nicknamed 'Hands of Stone' (5)



CLICK or TAP to go back to the CONTENTS PAGE



DATE

4 January
Epiphany

11 January
Baptism of Christ

18 January
Epiphany 2

25 January
Epiphany 3 Conversion of Paul

1 February
Presentation of Christ Candlemas

Lower Nadder Benefice Services

Barford St Martin
Baverstock
Compton Chamberlayne
Dinton
Fovant
Sutton Mandeville
Teffont Evias
Teffont Magna

11.15	AAC	EB
-	-	-
09.30	PC	EB
09.30	AAC	MH
08.00	HC02T	EB
16.00	AAS	EB
-	-	-
-	-	-

09.30	McW	LAY
-	-	-
-	-	-
-	-	-
-	-	-
09.30	To Sutton	-
09.30	McW	MG
11.15	AAC	MG
-	-	-

-	-	-
-	-	-
-	-	-
10.00	AAC	EB/BH
-	-	-
-	-	-
-	-	-
-	-	-

09.30	BCP PC	JT
-	-	-
-	-	-
09.30	McW	EB
09.30	PC	PC
09.30	To Fovant	-
-	-	-
11.15	AAC	EB

11.15	AAS	-
-	-	-
09.30	PC _T	-
09.30	AAC	-
08.00	HC02T	-
-	-	-
-	-	-
-	-	-

Upper Nadder Benefice Services

Ansty
Chicklade
Hindon
Chilmark
Fonthill Bishop
Fonthill Gifford
Swallowcliffe
Tisbury

-	-	-
-	-	-
09.30	PC	JN
11.15	AAC	JN
17.00	EBCP	JA
08.00	HCBCP	JN
11.15	PC _T	MC
09.30	AAS	JA

11.15	PC	JN
-	-	-
09.30	AAC	JN
09.30	AAS	JA
08.00	HCBCP	JN
11.15	MBCP	JA
18.00	EBCP	JA
09.30	PC	BB

-	-	-
-	-	-
18.00	EBCP	JN
11.15	AAC	JN
09.30	MBCP	JA
-	-	-
08.00	HCBCP	JN
09.30 18.00	PC Choral Evensong	JN JA

11.15	AAC	MH
-	-	-
09.30	PC	JN
11.15	MP	LAY
-	-	-
11.15	MBCP	JA
11.15	MBCP	LAY
08.00 09.30	HCBCP PC	TH SWR

-	-	-
-	-	-
09.30	PC	-
11.15	AAC	-
17.00	EBCP	-
08.00	HCBCP	-
11.15	PC _T	-
09.30	AAS	-


SERVICES

AAC	All Age Communion
AAS	All Age Service
BCP	Book of Common Prayer
CbE	Communion by Extension
CE	Choral Evensong (BCP)
CW	Common Worship
E	Evensong or Evening Prayer
FC	All Age Family Communion
HC	Holy Communion (said)
HC02T/C	Order 2 Communion, traditional/contemporary

M	Mattins or Morning Prayer
MP _r	Morning Praise
PC	Order 1 Communion (with hymns)
PC _T	Order 1 Communion, traditional language (with hymns)
PC02T	Order 2 Communion, traditional language (with hymns)
PC02T/C	Order 2 Communion, traditional/contemporary
RS	Reflective Servic
SoP	Songs of Praise
SoW	All Age Service of the Word

CLERGY

JA	Canon Judy Anderson
BB	Barry Blackford
EB	Rev. Elaine Brightwell
MC	Rev. Michael Camp
PC	Rev. Pat Clegg
JD	Julie Dunstan (LLM)
LE	Ven. Louise Ellis
MG	Canon Michael Goater
BH	Ven Barney Hopkinson
MH	Rev. Mark Hayter
JN	Rev. Jo Naish
JT	Rev. Jenny Taylor
TH	Tim Hiller
AW	Rev. Alison Waterhouse





Healing & Wholeness

Come to join us in the stillness, bringing with you any person or situation you wish to pray for that is near to your heart.

Wednesday January 14th, 4.00pm
In the Upper Nadder Benefice

St Andrew's Chapel St John the Baptist Church, Tisbury





Now after Jesus was born, wise men from the east came. May we too come and worship the one "who will shepherd my people"

As we step into the new year...



As we step into the new year, the world around us can feel heavy. Wars rage in multiple regions, displacing millions and leaving communities struggling to survive.

Natural disasters, economic instability, and political unrest add layers of complexity to human suffering. Yet, even amidst these challenges, there are signs of hope — not as an abstract concept, but as something tangible, expressed through human kindness and solidarity.

The story of the Good Samaritan (Gospel of St. Luke 10:25-37) has long been a reminder of the

power of compassion. A traveller is beaten, left for dead, and ignored by passersby — until someone from outside their immediate community stops to help, offering care without expectation of reward.

In our contemporary world, this timeless story resonates as a call to action: the person in need might be someone we do not know, someone far away, or someone whose struggles are invisible to our daily lives. Yet our response, no matter how small, can make a life-altering difference.

Today, countless individuals and organisations embody this principle. Humanitarian aid workers deliver food, clean water and medical care to war-torn areas. Volunteers gather supplies for displaced families. Ordinary people donate their time, money or skills to support refugees, victims of natural disasters, and communities recovering from crises. These acts, though often unseen, create ripples of hope that remind us of our shared humanity.

Hope is not passive. It is active. It requires awareness, courage and empathy. In the face of despair, hope motivates us to act, to extend

care where it is most needed. It is not blind optimism, but a commitment to be present, to respond, and to refuse indifference. Like the Good Samaritan, it calls us to prioritise human dignity over convenience, compassion over prejudice, and action over apathy.

While global events may feel overwhelming, it is important to remember that even small

gestures matter.

A donation to a relief organization, a letter of encouragement to someone affected by conflict, or supporting policies that protect human rights can be expressions of hope. Communities that come together to aid the vulnerable remind

us that hope is collective. It grows not in isolation but through shared responsibility and mutual care.

As we move into 2026, we can carry the spirit of the Good Samaritan into everyday life. Listening to the needs of others, offering practical help, advocating for justice and amplifying voices that are often silenced are all ways to embody hope. By acknowledging the hardships that exist while also acting to alleviate them, we create a world where hope is visible, tangible, and resilient.

In a world marked by conflict and crisis, hope is not a luxury — it is essential. It is what allows communities to rebuild, families to heal and societies to progress despite adversity.

This January, let us reflect on the ways we can be helpers in our own circles, communities and the wider world. Let us be the neighbours who stop, who care and who act — small steps that collectively light the path toward a more compassionate, hopeful future.

Rev. Elaine Brightwell
Rector Lower Nadder Benefice



Barford St Martin



Burcombe



TEA and CHATS

Plenty of tea, coffee, cake and chat with many friends from our villages.

There will be a talk by Roy Wilde and Tracy Dolittle

'PRIMROSE'

A BARFORD ST MARTIN HORSE

ALL WELCOME

TUESDAY 20th JANUARY

2-4pm in the church.

There is no charge. Donations for the church please? Thank you. Jenny Barrett

jennybarford@gmail.com



Sutton Mandeville



All Saints Church
Sutton Mandeville

MONTHLY DRAW RESULTS



NOVEMBER 2025

1st £40 — 22

2nd £20 — 09

3rd £10 — 18

To join in please contact Kate Clutterbuck
kateclutterbuck5@gmail.com

So what's your New Year's Resolution? And how long will it last?



Last summer, fearing that, come the cold weather, I wouldn't be able to fit a jumper under my cassock (essential in some of the cooler churches in the area), I decided I simply must lose some weight.

Having done this before, I knew it wouldn't be easy – but it would certainly be worthwhile, not just in terms of my wardrobe, but also for the health benefits it would bring. Four months in, I'm still working at it, and seeing results.

The things we resolve to do (or stop doing) every New Year are usually things that will test us. Hopefully they are also things that will benefit us or those around us. Usually, when we make these resolutions we have every intention of keeping them. But we're all human! St Paul wrote in his letter to the Romans, 'For even though the desire to do good is in me, I am not able to do it.' Jesus himself said to his disciples, as he urged them not to fall into temptation, 'The spirit is willing, but the flesh is weak.' Only too often, despite starting with the very best of intentions, before long our resolve weakens, and things slip.

A New Year's Resolution is a new start. It may be something quite small, or something much

more significant. It could be health and fitness related: starting a daily workout routine or drinking more water. It could be some form of personal development, such as reading more books or learning a new skill or hobby. Perhaps it's financial: creating and sticking to a monthly budget, or saving for something special or just for a rainy day. You might be looking for a better work-life balance by setting boundaries. You might be looking to improve your mental or spiritual wellbeing, perhaps by setting aside time for self-care activities and relaxation, or perhaps by deciding to go to church once a month, once a fortnight or even every week – you can be sure of a warm welcome. Ideally, a New Year's Resolution reflects your values and points you towards the person you want to become.

Here are a few tips for achieving your resolutions. Firstly, set realistic goals. Then create a plan. Stay flexible, adjusting your plans as necessary. And finally, celebrate those small wins!

Here's to a productive and fulfilled 2026.
Happy New Year!

Canon Judy Anderson
Licensed Lay Minister,
Upper Nadder Benefice



Panto stars bring festive joy to patients at Salisbury Hospital

The Stars Appeal, Salisbury District Hospital's Charity and cultural charity Wiltshire Creative, teamed up to bring some festive joy to patients with a special visit from the colourful characters of this year's Salisbury Playhouse pantomime.

Fairy Fabulous (Nic James) and Dolly the Cow (Eloise Runnette) along with fellow cast member Brandon Thompson, who are currently appearing in *Jack and the Beanstalk* at Salisbury Playhouse, delighted patients on

the Children's Ward and Imber Elderly Care Ward at Salisbury District Hospital.

The visit on Wednesday, December 17, was organised in collaboration with Wiltshire Creative as part of the Hospital Charity's Stars Appeal Live programme. Stars Appeal Live is one of a range of wellbeing projects that the charity offers at the hospital, which are funded entirely by donations and fundraising. The programme brings live music and other



The panto cast members visiting Imber Ward

continued

creative activities to patients and visitors across the hospital.



programmes like Stars Appeal Live possible.”

Charlotte, aged 16, from Salisbury, who was being cared for on the Children’s Ward, said: “It was fun meeting the panto stars. It made me feel good and brightened up my day. Being in hospital isn’t the most enjoyable of experiences so when you have fun people coming in it makes it more interesting. It was really nice to see them.”

Stars Appeal Live Co-ordinator Rebecca Seymour added: “It was wonderful to see the excitement and joy this magical visit brought to patients and staff. We are so grateful to the cast members and Wiltshire Creative for being part of our Stars Appeal Live programme this Christmas. Thank you to all the donors who support the Stars Appeal and make

Wiltshire Creative Executive Director Rosa Corbishley said: “As a charity, we are delighted that our Jack and the Beanstalk cast members could bring some pantomime magic to the patients at Salisbury District Hospital this Christmas. Pantomime brings joy, laughter and happiness to the city every year. We love collaborating with the Stars Appeal to lift patients’ spirits and ensure that those that can’t visit the Playhouse this year don’t feel left out.”

Jack and the Beanstalk is at Salisbury Playhouse until January 11, 2026.
For tickets and more information visit wiltshirecreative.co.uk



Fovant

St George’s 50/50 Lottery Club

THE WINNING NUMBERS IN THE NEW DECEMBER 2025-26 DRAW ARE:

1st £35 — 127
2nd £25 — 34
3rd £15 — 59

THIS IS THE SECOND DRAW OF THIS ‘LOTTERY YEAR’.

Very many thanks for your support in providing funds to the church to help with all these things that continually need attention.

HAPPY CHRISTMAS

Liz Daw 01722 714362 or liz.daw1@btinternet.com



Do you run a small business?

We have over 650 subscribers who just might want to know about you!

ADVERTISE WITH US FOR 6 MONTHS — Half page – £60 | Whole page – £120 | Double page spread – £180
ADVERTISE WITH US FOR A WHOLE YEAR — Half page – £100 | Whole page – £200 | Double page spread – £300



SUDOKU solution

3	2	9	7	4	6	5	1	8
1	8	7	9	2	5	4	3	6
4	5	6	8	3	1	9	2	7
7	6	8	1	9	3	2	5	4
9	3	5	2	6	4	7	8	1
2	1	4	5	8	7	3	6	9
5	9	2	6	7	8	1	4	3
8	7	3	4	1	2	6	9	5
6	4	1	3	5	9	8	7	2

CROSSWORD solution

H	A	N	I	B	A	L	O	N	I	O	M
U	O	S	E	L	A	D	I				
M	O	N	T	E	I	T	H	A	C	K	A
P	E	R	O					A	H	A	
H	O	U	S	E				C	E	D	A
Y	E	H	O	D	I	M	E	N	H	I	N
E								O	U	I	O
E								M	I	D	D
E								A	G	U	H
T	E	N	N	E	S	S	E	E			
U	A	C						A	U	S	O
A	L	T	A	I	R			A	L	F	R
N	E	T						E	A	E	R
T	E	D	O	V	E			H	Y	P	N

Would you like to advertise your business but have no artwork?

We will design and produce your ad for FREE*

* Minimum order, half page for 6 months.

Design & Advertising:

Jan Kalinowski | jan@villagebuzz.online

mobile: 07881 288027

Advertising and article submission deadline



Friday 23 January

If you plan to submit ready-made advertising please ensure that the file is in the format of either a high resolution Acrobat PDF file or a high resolution JPEG (300ppi) file – thank you.

VILLAGE BUZZ

A MONTHLY MAGAZINE FOR VILLAGES IN AND AROUND THE NADDER VALLEY

JANUARY 2026

USEFUL INFORMATION

SALISBURY

HOUSEHOLD RECYCLING CENTRE

SUMMER (1 April - 31 October)

9.00am - 4.00pm

CLOSED ON THURSDAYS

WINTER (1 November to 31 March)

10.00am - 4.00pm

CLOSED ON THURSDAYS & FRIDAYS

Stephenson Road,
Churchfields Industrial Estate SP2 7NP
Tel: 01722 322309

MEDICAL

SPRING ORCHARD SURGERY

Telephone: 01722 714789
Spring Orchard Surgery, High Street, Fovant,
Salisbury, Wiltshire, SP3 5JL

OLD ORCHARD SURGERY

Telephone: 01722 744775
Old Orchard Surgery, South Street, Wilton,
Salisbury, SP2 0JU

SALISBURY DISTRICT HOSPITAL

Odstock Rd, Salisbury SP2 8BJ
Tel: 01722 336262

NICHOLSON AND BOUGH CHARITY FOR BARFORD ST MARTIN RESIDENTS

Telephone: 0797 337 8282

or write in strict confidence to:
Clerk to the Trustees, 2 The Poplars,
Barford St Martin, SP3 4AR

THEATRES/ART

Salisbury Playhouse

Malthouse Lane, Salisbury SP2 7RA
Tel: 01722 320333

Salisbury City Hall

Malthouse Lane, Salisbury SP2 7TU
Tel: 01722 434434

Salisbury Arts Centre

Bedwin St, Salisbury SP1 3UT
Tel: 01722 321744

Odeon Cinema Salisbury

New Canal, Salisbury SP1 2AA
Tel: 0333 014 4501

WILTSHIRE COUNCIL

HEAD OFFICE

Bythesea Road, Trowbridge, Wiltshire BA14 8JN

BOURNE HILL

Salisbury, Wiltshire, SP1 3UZ
Council offices are open Monday to Friday from
8.30am until 5.30pm

WILTSHIRE COUNCIL SERVICES

Worried about a child?

If you believe a child or young person is at risk
of significant harm, neglect or injury, report
your concerns to the Multi-Agency
Safeguarding Hub (MASH) on 0300 4560108.

Adult Care

Tel: 0300 456 0111
adviceandcontact@wiltshire.gov.uk

Benefits

Tel: 0300 456 0110
benefits@wiltshire.gov.uk

Blue Badges

Tel: 01225 713002
bluebadge@wiltshire.gov.uk

Building Control

Tel: 0300 456 0113
buildingcontrol@wiltshire.gov.uk

CHILDREN'S SERVICES

Early Help

Tel: 01225 718230

Children's Services

Special Educational Needs and Disability
(SEND)

Tel: 01225 757985

Children's Services Social Care

Tel: 01722 438165

COMMUNICATIONS

(press and media related enquiries)
Tel: 01225 713115 or 01225 713370
communications@wiltshire.gov.uk

Corporate Investigation Team

01249 706456
investigations@wiltshire.gov.uk

Council Tax

Tel: 0300 456 0109
counciltax@wiltshire.gov.uk

Elections

Tel: 0300 456 0112
elections@wiltshire.gov.uk

Early Years and Childcare

Tel: 0300 003 4561
earlyyears@wiltshire.gov.uk

Fraud Hotline (24 hours)

Tel: 01249 706456

Highways

Tel: 0300 456 0105 or to report
non-urgent highway defects.

Homes4Wiltshire (housing register)

Tel: 0300 456 0104
homes4wiltshire@wiltshire.gov.uk
Housing Options/Homelessness
homeless@wiltshire.gov.uk
Tel: 01722 434233

Parking

Tel: 01249 706131
parking@wiltshire.gov.uk

Pest Control, Noise and Pollution, Environmental Health

Tel: 0300 456 0107
customerservices@wiltshire.gov.uk

Planning

Tel: 0300 456 0114
developmentmanagement@wiltshire.gov.uk

Rubbish and Recycling

Tel: 0300 456 0102
customerservices@wiltshire.gov.uk

Schools Admissions

Tel: 01225 713010
admissions@wiltshire.gov.uk

School Transport

Tel: 01225 712852
educationtransport@wiltshire.gov.uk

Can't find the service you require?

Contact Customer Services
Tel: 0300 456 0100



CLICK or TAP to go back
to the CONTENTS PAGE