



VILLAGE BUZZ



A MONTHLY MAGAZINE FOR VILLAGES IN AND AROUND THE NADDER VALLEY, SALISBURY, WILTSHIRE

JULY 2026



When the sun stands still











This is a PDF file with INTERACTIVITY.
Simply CLICK or TAP any email, web address or page link.



Contents page

Just **click** or **tap** on any of the panels below to take you to the relevant two page spread.

	Species of the month Painted Lady Butterfly Peter Thompson spread 3		Brain Gym spread 19
	POETRY Summer Solstice Stacey Cassarino spread 7		Nadder Valley Benefice Church Services spread 20
	Summertime is here! MOPHEAD MILDRED spreads 10		ALL THINGS BRIGHT AND BEAUTIFUL Flower Festival spread 21
	SUMMER SOLSTICE spread 18	INFORMATION: 1) Deadlines for SUBMISSIONS 2) COST of Advertising in Village Buzz spread 32	

 **TO PRINT A SPREAD:** Village Buzz has a new page numbering format that ties in with the spread you see on your screen. Each spread now has only one 'page' number (eg these 2 pages are now spread 2), so to print out a particular spread simply specify the spread number at the bottom.

Dear Reader: Do you have an interesting story to tell or a hilarious tale or memorable experience to share? Is there a special poem that moves you? Or do you have a fascinating family history or a passionate interest that you would like to spread the good word about? **Email us** and we will create an attractive article in Village Buzz for you and our readership to enjoy reading together — Just send me your text and any images to: jan@villagebuzz.online and we'll do the rest.

MOULDING

THE COUNTRY HOUSE BUILDERS

01722 742228 | thecountryhousebuilders.co.uk





Species of the month

Painted Lady Butterfly

Peter Thompson, Barford.

Each year, the Painted Lady butterfly spreads northwards from the desert fringes of North Africa, the Middle East, and central Asia, recolonising mainland Europe and reaching Britain and Ireland. In some years it can become an abundant butterfly, and I reckon that this is going to be one of those years!

The Painted Ladies that arrive here, fly north from sub-Saharan Africa at the start of every year. Successive generations breed in north Africa and then Spain and France, before reaching us, usually in mid to late summer. However, this year we have already had large numbers arriving in off the sea, and rapidly flying northwards, encouraged by the unseasonably warm, southerly winds we experienced in the second half of May.

Many are faded grey “grandparent” butterflies who may have travelled directly from north Africa or southern Spain, while others are brighter orange short-haul travellers, the French-born offspring of the March and April arrivals in southern Europe.

This butterfly has a strong flight and can be found anywhere in the British Isles, including Orkney and Shetland. An interesting fact is that this butterfly is the

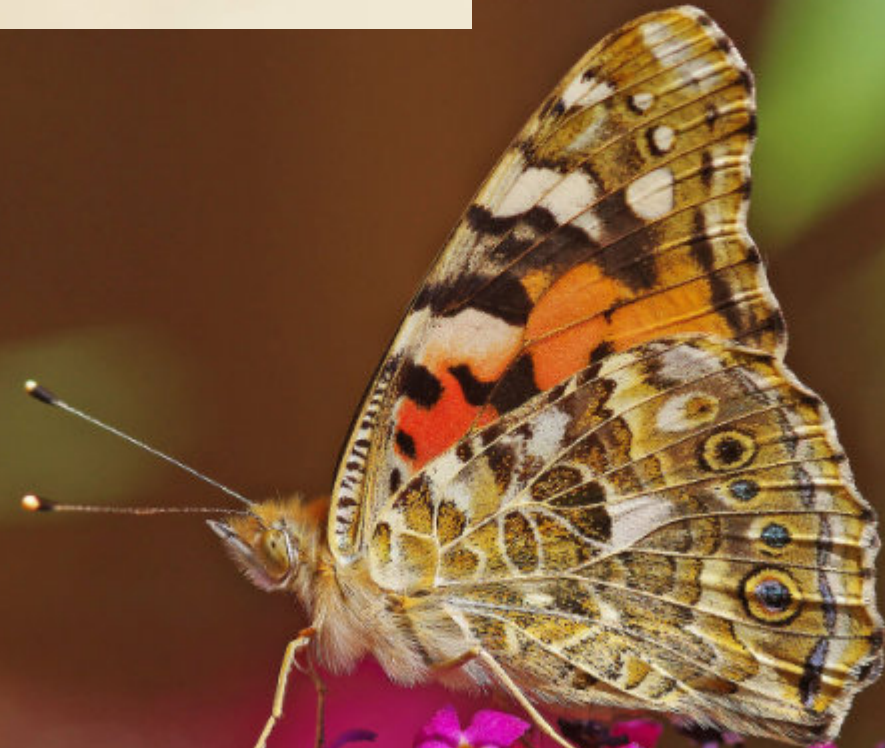
only butterfly species ever to have been recorded in Iceland!

Painted Ladies carry out the phenomenal 9,000 mile annual migratory route from Africa to the Arctic Circle – almost double the length of the famous migrations undertaken by Monarch butterflies in North America. However, no individual Painted Lady makes the whole trip. Instead, a succession of up to 10 generations each completes a leg of the journey.

That does not mean that an individual cannot fly a huge distance. Scientists have documented that Painted Ladies from West Africa can make an astonishing non-stop 2,600 mile flight across the Atlantic Ocean to South America!

But why make these huge trips? Well, it has been suggested that the urge to migrate is triggered when an individual encounters a certain density of its own kind within a given area. This theory makes perfect sense, since this species can, on occasion, occur in high densities that result in foodplants being stripped bare with many larvae perishing as a result.

As soon as these butterflies reach our shores, they start to breed, usually choosing thistles as the foodplant. Eggs are



CONTINUED





laid singly, usually on top of the leaf and are light green when first laid but turn grey before hatching. This stage lasts just over a week.

When the caterpillars hatch, they build a silk tent around one or more leaves from which they feed. This makes them very easy to find in the wild but difficult, no doubt, for a predator to penetrate. As the larva continues to grow, it builds successively larger tents, providing tell-tale clues of its presence to the trained eye.

After around 25 days, the caterpillar will pupate. In just 14 days, the bright, brand-new butterfly emerges and immediately flies north. So, you can see that a new generation can be produced in just 6 weeks.

The extent of the annual journey undertaken by the Painted Lady butterfly is astonishing. This tiny creature weighing less than a gram with a brain the size of a pinhead and no opportunity to learn from older, experienced individuals, undertakes an epic intercontinental migration to find plants for its caterpillars to eat.

For a long time, it was assumed that Painted Ladies simply died as the year began to draw to a close, as these butterflies cannot survive our cold winters. But this made the whole exercise of a rather frenzied migration seem relatively pointless.

However, scientists have now discovered that the Painted Lady does indeed migrate south each autumn, but makes this return journey at high altitude, out of view of butterfly observers on the ground. Radar records revealed that Painted Ladies fly at an average altitude of over 500 metres on their southbound trip and can clock up speeds of 30 mph by selecting favourable conditions.

What an amazing species! — **PT**

Peter Thompson lives in Barford St. Martin and has worked in conservation and farming all his life. He is Chair of the Salisbury & District Natural History Society and would be delighted if readers joined either the society's Facebook page or the society itself – or indeed both! If you are interested, please see details on the right.

SALISBURY & DISTRICT NATURAL HISTORY SOCIETY



REGULAR FIELD MEETINGS & INDOOR TALKS

Founded in 1952, the society studies and records the natural history of Salisbury and the surrounding area.

No expertise is needed to join us! Everyone with an interest in nature and the countryside is welcome.

Annual subscription is only £10

Family membership – £15

Junior membership – Free

So, if you would like to find out more about the wildlife in your local area, and meet friendly, like-minded people, go to:

www.salisburynaturalhistory.com



www.facebook.com/groups/salisburynaturalhistorysociety



Lawn care to the highest possible standards

Get an INSTANT, no obligation quote by using our online lawn measuring tool in 3 easy steps:

[GET INSTANT QUOTE](#)

- 1 Enter your postcode
- 2 Outline your lawn
- 3 Submit your details



What makes Lawntech stand out from the crowd?

- 🌿 A track record of over 30 years experience, delivering consistent professionalism
- 🌿 Highly qualified and accomplished technicians with over 130 years of combined experience
- 🌿 Offering a sustainable approach to lawn care, using semi organic fertilisers. Fully organic treatment programme available

 **Lawntech**[™]

FREEPHONE 08000 665 465

Free to call - landlines and mobiles

info@lawn-tech.co.uk

www.lawn-tech.co.uk



Lawntech[™]

 **CLICK or TAP to go back to the CONTENTS PAGE**

If you run a business you'd like our readership to know about, let us know.



jan@villagebuzz.online | gill@villagebuzz.online

villagebuzz.online
because that's where we are – online



Stacie Cassarino is an acclaimed American poet, scholar, and educator whose work explores the intersections of memory, identity, landscape, desire, and the natural world. She is the author of *Each Luminous Thing* (Persea Books, 2023), winner of the prestigious Lexi Rudnitsky Editor's Choice Award, and *Zero at the Bone* (New Issues Press, 2009), which received both a Lambda Literary Award and the Publishing Triangle's Audre Lorde Award.

Throughout her career, Cassarino has earned widespread recognition for the lyrical precision and emotional depth of her poetry. She was awarded the renowned 92Y Discovery/The Nation Prize, one of America's most respected honours for emerging poets, and was a finalist for the Rona Jaffe Foundation Writers' Award.

Born into a family that valued literature and learning, Cassarino pursued an academic path alongside her creative practice. She earned a BA from Middlebury College, an MA from the University of Washington in Seattle, and a PhD in English from the University of California, Los Angeles (UCLA).

Today, Cassarino serves as Professor of English and Director of Creative Writing at Smith College in Northampton, Massachusetts, where she teaches literature and creative writing. She lives in Vermont with her three daughters, drawing inspiration from the landscapes and communities of New England that often resonate throughout her work.

Summer Solstice

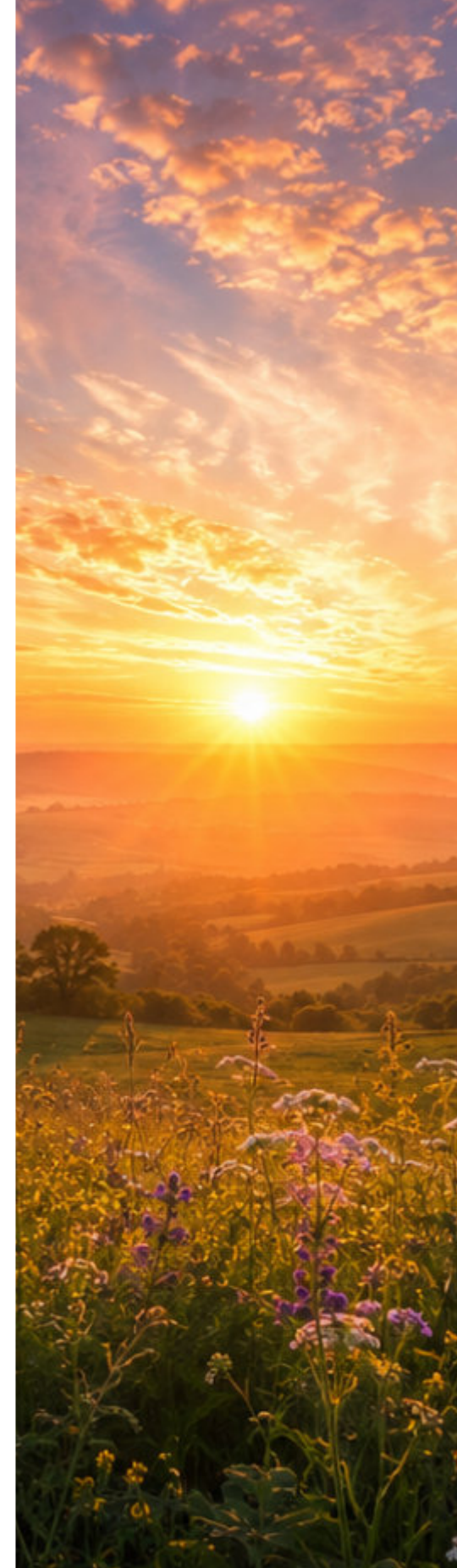
BY STACIE CASSARINO

I wanted to see where beauty comes from
without you in the world, hauling my heart
across sixty acres of northeast meadow,
my pockets filling with flowers.
Then I remembered,
it's you I miss in the brightness
and body of every living name:
rattlebox, yarrow, wild vetch.
You are the green wonder of June,
root and quasar, the thirst for salt.
When I finally understand that people fail
at love, what is left but cinquefoil, thistle,
the paper wings of the dragonfly
aeroplaning the soul with a sudden blue hilarity?
If I get the story right, desire is continuous,
equatorial. There is still so much
I want to know: what you believe
can never be removed from us,
what you dreamed on Walnut Street
in the unanswerable dark of your childhood,
learning pleasure on your own.
Tell me our story: are we impetuous,
are we kind to each other, do we surrender
to what the mind cannot think past?
Where is the evidence I will learn
to be good at loving?

The black dog orbits the horseshoe pond
for treefrogs in their plangent emergencies.
There are violet hills,
there is the covenant of duskbirds.
The moon comes over the mountain
like a big peach, and I want to tell you
what I couldn't say the night we rushed
North, how I love the seriousness of your fingers
and the way you go into yourself,
calling my half-name like a secret.
I stand between taproot and treespire.
Here is the compass rose
to help me live through this.
Here are twelve ways of knowing
what blooms even in the blindness
of such longing. Yellow oxeye,
viper's bugloss with its set of pink arms
pleading do not forget me.
We hunger for eloquence.
We measure the isopleths.
I am visiting my life with reckless plenitude.
The air is fragrant with tiny strawberries.
Fireflies turn on their electric wills:
an effulgence. Let me come back
whole, let me remember how to touch you
before it is too late.



CLICK or TAP to go back
to the CONTENTS PAGE



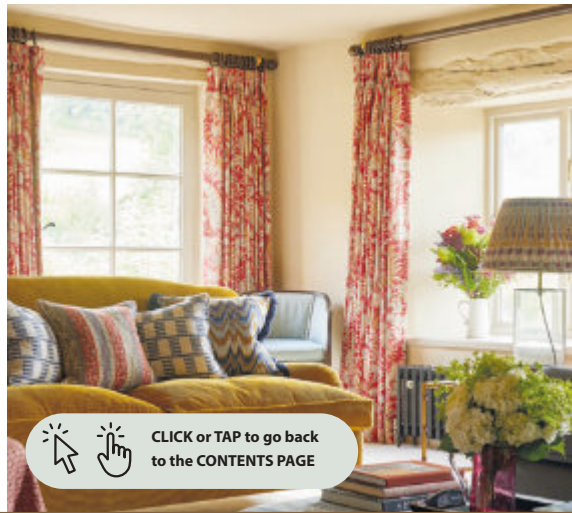


EST. 2004

COMPTON SMITH

INTERIORS

- Interior decorating consultancy.
- Bespoke curtains, blinds and upholstery.
- Suppliers of well-known specialist paints. Farrow & Ball, Edward Bulmer, Little Greene, Pierre Frey, Colefax & Fowler, Fermoie, Lewis and Wood, Sanderson Design Group and many more designers.

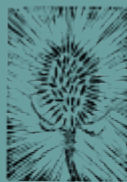


CLICK or TAP to go back to the CONTENTS PAGE



Mondays to Thursdays: 08.30 - 17.30
 Fridays: 08.30 - 17.00 Saturdays: 09.30 - 13.00
 Tel: +44 (0)1747 850150 info@comptonsmith.co.uk
 10d Wincombe Business Park, Shaftesbury, Dorset, SP7 9QJ

WWW.COMPTONSMITH.CO.UK



Teasel
Furniture Makers

Handmade
Bespoke
Cabinetry

Please contact us with any project enquiries.

07561 091 252

sam@teaselfurnituremakers.co.uk

www.teaselfurnituremakers.com

teaselfurniture.makers

Manor Farm, Sutton Mandeville, SP35NL



SlimmingWorld

TISBURY

HINTON HALL, CHURCH STREET

MONDAY 7PM

EVELYN - 07825 556871



real food, real support, real results

feel
real
good



Boiler Servicing & Maintenance

BREAKDOWNS | REPAIRS | OIL | GAS | LPG

Mark Benfield

07974 249287

mark@mabheatingservices.co.uk

**YOUR LOCAL FULLY QUALIFIED
PLUMBER AND HEATING ENGINEER**

Over 30 years experience

- Gas & Oil
- Plumbing
- Heating
- Boiler & Cooker Servicing

No call out charge

Same day and emergency service available

Please contact Harvey on 07767887788

or contactrcm@gmail.com

Gas Safe Registration no 133743





Mophead Mildred

So far... too much rain, too much sun, too much heat, too much wind
– all at the wrong time and in the wrong order!

This rather unpredictable gardening year is (hopefully) returning to more normal conditions after the crazy heatwave toward the end of June – thank goodness! Our garden plants will all be heaving a huge sigh of relief after the extreme stresses of recent days (and nights) and all we need now is a good British downpour to help our gardens recover quickly. Having to thoroughly water pots, troughs and planters at the end of long, very hot and humid days was the last thing Mophead Mildred wanted to do, but necessary if survival of the lovingly chosen (and planted) bedding was to be assured. As always, feed them all once a week with tomato feed which will also give them a boost to cope with the aftermath of the recent heat and stress.

Thanks to the unseasonable heat, quite a few perennials have come into flower some weeks before they should, and this has left spaces in flower beds sooner than usual. Hopefully, now temperatures are lower, things should readjust and those spaces quickly disappear as the next wave of blooms catches up and takes centre stage, restoring the garden's natural course. Some appear not to have been disrupted by the heat, for example hollyhocks, for which 'the hotter and dryer the better' seems to be perfect. Continue to deadhead regularly to keep everything looking good; it's a great way to tidy up and at the same time it gives the weary gardener precious time to free-wheel while doing something undemanding but satisfying. Clematis are looking good although some seem to be suffering from mildew thanks to the dry weather. Ensure they have 'cool feet and hot heads' as these are their ideal growing conditions, so shade the base with low shrubs such as pulmonarias, geraniums or even sun-tolerant hostas. Two particularly lovely varieties in Mildred's garden are *c. kiriloviic* (right) and *c. jackmanii* (next page).

CONTINUED



CLICK or TAP to go back
to the CONTENTS PAGE



Mophead Mildred

Roses have almost finished their first glorious flush so deadhead in order to have a second flush later in the season. Unless, of course, the variety has only one flowering, in which case look forward to the hips which will appear later in the summer and into autumn. Some *rosa rugosa* varieties have delightful, large, plump hips while continuing to produce highly scented blooms through the summer. Delicate yet sturdy thalictrums (right) continue to look delightfully airy as they wave their fluffy flower heads 2m above the ground.

At last, when the watering, deadheading, pruning and feeding are all completed, you can pat yourself on the back (if you can still reach!) for jobs well done, before collapsing into a chair clutching a well-deserved glass/cup/mug* of wine/tea/fizz/gin/water* and happily chilling out.

* delete as appropriate



CLICK or TAP to go back to the CONTENTS PAGE



Tisbury



A Simple 'De-Stressing' Solution after a Hot Day's Work!

What could be nicer or more fun than finishing work or college on a warm summer's day, to meet up with friends (new and old) for a game of croquet, in Tisbury?!!

Croquet is a relatively simple game to be enjoyed with others where age and gender are irrelevant. It may be simple to learn but you will soon discover its twists and turns that make it such a unique and enjoyable sport – for all!

The courts in the club are already well used but there is lots of capacity in the evenings and at weekends which could be ideal if you are busy working at all other times during the week. Courts can be booked by members for games with specific players (members or guests). In addition, the Club runs 'Mix-ins' with free instruction and the opportunity to link up and join in with other members to learn more about the two main types of croquet. All the equipment is provided



free of charge to members, and there is a cheery Club House with all necessary facilities if members want to enjoy available refreshments, supplemented perhaps by something more elaborate, brought in to round off the game.

The Club is 'not for profit' so all the subscriptions go towards the essential running of the Club House and grounds – and the amazing thing is that membership costs less than the price of three cups of coffee per month!

This brilliant opportunity could quite change the shape of your summer (and the winter too, as play is subject only to the weather).

Regardless of how much or how little croquet

experience you may have, why not look us up on our excellent website (below) and then arrange to come down for a free "taster session" to see if it could be right for you?

YOU HAVE NOTHING TO LOSE!

www.tisburycroquet.club



CLICK or TAP to go back to CONTENTS PAGE

SAVE THE DATE!



TEFFONT VILLAGE SHOW SATURDAY 29 AUGUST 2026



TEFFONT'S FAMOUS TEA TENT
DELICIOUS BURGERS & HOT DOGS
PIMMS WINE & ALE BAR



TEFFONT'S FINEST FRESH CAKES & LOCAL PRODUCE

TRADITIONAL GAMES & TUG OF WAR

BOTTLE STALL & RAFFLE WITH GREAT PRIZES

WILTON ROYAL BRITISH LEGION BAND

DOG CLASSES & RACES

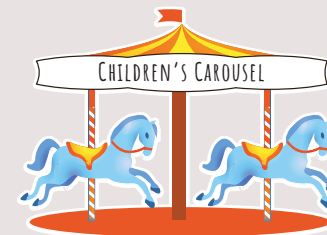
2-5PM

THE MANOR, TEFFONT EVIAS, SP3 5RJ

KINDLY SPONSORED BY:



www.ruralview.co.uk



PROUDLY SUPPORTING
WILTSHIRE & BATH AIR AMBULANCE
SALISBURY HOSPICE



Children's Matinée Ballet

to open the celebrations
for Ballet Under the Stars 2026 at Hatch House,

Families are invited to experience the wonder of live dance at the Children's Matinée Ballet, followed by the Director's Dress Rehearsal, ahead of the annual Ballet Under the Stars 2026 at Hatch House on Thursday 23 July 2026.

The special afternoon has been created to introduce young audiences to the magic of ballet while building excitement for the acclaimed Ballet Under the Stars 2026.

The Children's Matinée Ballet plays an important role in raising awareness and support for The Dicky Buckle Fund, a charity dedicated to nurturing the next generation of dance talent. Through grants, mentoring, performance opportunities and creative development support, the Fund helps young dancers, choreographers and designers take the next steps in their artistic careers.

The event also serves as the family introduction to Ballet Under the Stars, the internationally renowned production presented by Covent Garden Dance Company, which returns to Hatch House from 24–26 July 2026. The Covent Garden Dance Company celebrates its 20th anniversary year in 2026 and continues to bring world-class ballet to Wiltshire audiences.

Hosted by James Bamford of Project Dance, the event will offer children and their families a unique opportunity to enjoy professional ballet in a welcoming and interactive setting. James is an award-winning dancer, choreographer and educator who has built a reputation for creating inspiring dance experiences for young people. Through Project Dance, he has worked extensively to widen access to dance and encourage the next generation of performers. Alongside professional dancers, talented young performers from local ballet schools will also take to the stage, creating an unforgettable celebration of dance and creativity.

Set against the beautiful backdrop of Hatch House in Wiltshire, the programme will include a behind-the-scenes introduction to the magic of theatre, including lighting, music and stagecraft, two professional ballet performances, and a lively finale where children are invited on stage to join in the dancing themselves.

For children already attending dance classes or experiencing ballet for the first time, the Matinée offers a fun, engaging and accessible introduction to the performing arts while raising awareness for the important work of The Dicky Buckle Fund.

All proceeds from the event will support The Dicky Buckle Fund, helping to provide grants, commissions, mentoring and performance opportunities for emerging artists in dance and the performing arts.

The Children's Matinée Ballet will run from 3.00pm to 4.30pm, with guests invited to arrive from 2.30pm. Following the performance, families are welcome to stay on for the full director's dress rehearsal for Ballet Under the Stars and enjoy a picnic in the grounds. Refreshments, including drinks, hot dogs and ice cream, will also be available to purchase on the day.

Event Details:

Children's Matinée Ballet – Ahead of Ballet Under the Stars 2026 at Hatch House Thursday 23 July 2026
3.00pm – 4.30pm (arrival from 2.30pm)
Hatch House, Tisbury, Wiltshire, SP3 6PA

Ticket prices:

• Adults: £25 • Children aged 10–15: £15 • Children under 10: £10 Attendance to the full director's dress rehearsal of Ballet Under the Stars (5.30pm–8.00pm)

Families wishing to stay on for the full dress rehearsal can purchase an add-on ticket:

- Family ticket (up to two adults and three children): £50
- Adult: £50 • Children aged 10–15: £15
- Children under 10: £10 For larger group bookings, contact admin@dickybucklefund.com. Book tickets: <https://www.dickybucklefund.com>

The Dicky Buckle Fund is a registered charity (Charity No. 1163430) supporting emerging artists in dance and the performing arts. Through funding, commissions and performance opportunities, the Fund helps develop new creative talent and bring original works to audiences across the UK and beyond. Ballet Under the Stars, presented by Covent Garden Dance Company in partnership with The Dicky Buckle Fund, returns to Hatch House from 24–26 July 2026. Celebrating its 20th anniversary season, the production is recognised as one of the UK's most distinctive ballet events, bringing internationally acclaimed dancers to a unique outdoor theatre setting in Wiltshire. For more information or high res images contact: Deborah Spencer on 07887 502 457 or deborah@planted-community.co.uk

★★★★★
"MAGICAL PERFORMANCE"
Country Life

DICKY BUCKLE FUND
SUPPORTING YOUNG ARTISTS

"TOP DRAWER!"
Mark Monahan,
The Daily Telegraph

CHILDREN'S
MATINÉE BALLET
AT HATCH HOUSE

Hosted by James Bamford of Project Dance

THURSDAY 23 JULY 2026

ALL PROCEEDS
SUPPORT
The Dicky Buckle Fund

TIME
3:00pm - 4:30pm
(Arrival from 2:30pm)

LOCATION
West Hatch • Tisbury
Wiltshire • SP3 6PA

DRINKS, HOT DOGS & ICE CREAM FOR SALE

BOOK NOW AT DICKYBUCKLEFUND.COM

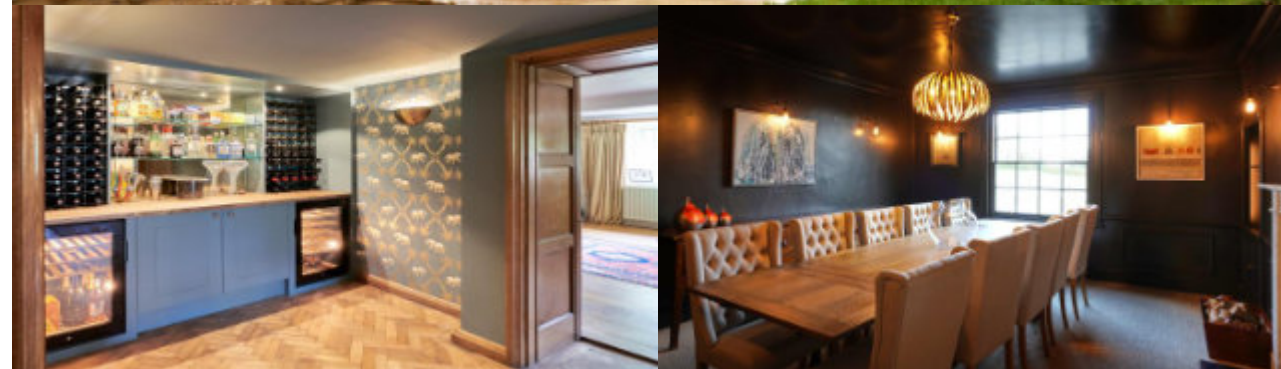


Fonthill House Garden, Tisbury, SP3 5RZ

Saturday 4th July
11am-4pm

Entrance £10.00, includes the
Fair & Gardens

www.rareplantfair.co.uk



DO YOU NEED A LOCAL ELECTRICIAN?

D West Electrical (Dinton)

Fully insured and no VAT charged
QUALIFIED TO CITY & GUILDS 2391 & 18TH EDITION.

From Changing a light fitting
to Consumer Unit Upgrades and
Electrical Installation Condition Reports

Office 07925 210477 | Mobile 07759 251704

Email: davewestelectrical@live.co.uk

SAVE up to 10% on your heating oil!



Join our BUYING CLUB!

- IT'S FREE TO JOIN
- Independent of suppliers
- Order for more than one location
- Pay the supplier direct
- Local supplier and depots
- Fortnightly reminders with opportunities to place orders
- Over 1200 members buying 1.5 million litres annually!

FOR FREE REGISTRATION AND TO COMPARE RECENT PRICES VISIT

www.nadder.oilbuyingclub.com

CLICK or TAP to go back
to the CONTENTS PAGE



SCAN ME

MIDNIGHT WALK

*Wings
& Sparkles*

SATURDAY 19TH SEPTEMBER

WALK REMEMBER FUNDRAISE

Interactive Memory Walk



Silent Disco



Glitter Stations



Memory Wall



Moments of Reflection



DJ Kev - Radio Odstock



Refreshments



LED Lights



Memory Cinema



Selfie Stations



Salisbury
Hospice Charity

Registered charity no 1123314

Five Rivers Leisure Centre

www.salisburyhospicecharity.org.uk

Salisbury Hospice Charity. Registered Charity No. 1123314. Registered Office: Salisbury Hospice Charity, Odstock Road, Salisbury, SP2 8BJ.

Kindly sponsored by
**bluebird
care**

THE BADGES FÊTE
 Saturday 18th July 2026
 12-4pm
 East Farm, Fovant SP3 5JD
 By kind permission of the Williams family
FREE ENTRY

ATTRACTIONS
 Climbing Wall
 Carousel
 Archery (all ages)
 Unicorn
 Face Painting, Glitter Bar, Hair Braiding
 Fete Games & Stalls

ARENA EVENTS
 Dog Show
 Dog Races
 Children's Races
 Tug of War
RAFFLE Fantastic Raffle
 COMMUNITY EXHIBITS TENT

FOOD & DRINK
 Tea Tent
 Bar & BBQ run by The Greater Good
 Pizza
 Ice Cream
 LIVE MUSIC
HICKORY MOON

With thanks to our generous sponsors

SILVER SPONSOR
 T. K. Jeans & Sons

BRONZE SPONSORS
 Bright Seeds, West Barn Lodge, Scalls, CH Church House Investment Management, Sutton Mandeville Parish Council, Compton Chamberlayne Village

In support of:
 Fovant Playground • Compton Chamberlayne Village Hall
 • Sutton Mandeville Rights of Way



Fovant

FOVANT BADGES SOCIETY

Annual Drumhead Service

SUNDAY 5 JULY 2026

3.00pm

(Please be seated by 2.45pm)

AT EAST FARM, FOVANT SP3 5JD

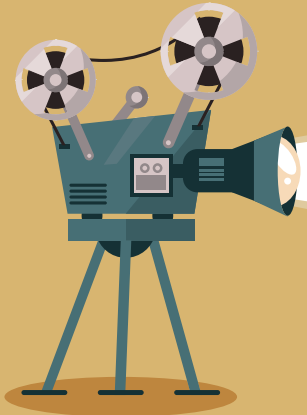
Follow signs on the A30

Please come
ALL WELCOME

To this poignant
Service of Remembrance



TALK



Moviola Cinema

Bishopstone

Bishopstone Village Hall SP5 4AA, usually on the last Friday of the month, at 7.30pm. Doors open at 7.00pm when a bar and snacks are available.

Bookings should be made with Caroline either by phone 01722 781044 or email: bvhticketoffice@btinternet.com — Entry is £6, paid on the door by cash, card or cheque.

Hamnet
24 July 2026

13



In late 16th-century England, Agnes, a healer sensitive to the world around her, builds a home with William, a local tutor and aspiring playwright. As their lives fracture, they are tested by distance, silence, and grief.

A Doctor Explains....

Dr Lindsay Kinlin has expanded her successful and very well received talks on various medical issues. Dinton has also now agreed to host these informative and often amusing discursive talks which take place at Fovant Village Hall on the 4th Thursday of the month at 4pm, and on the 2nd Thursday of the month at Dinton Village Hall. It's an open invitation to ALL who may be interested (patients and others alike, wherever you live).
www.fovantvillage.com/health-well-being



Dr Kinlin's Focus Sessions

Thursday 9 July

Dinton Village Hall 4 – 5pm

Thursday 23 July

Fovant Village Hall 4 – 5pm

'Summertime Health Problems'



CLICK or TAP to go back to the CONTENTS PAGE



MOVIOLA LTD EXISTS TO PROVIDE A RANGE OF HIGH QUALITY CINEMA-RELATED EVENTS FOR PEOPLE LIVING IN RURAL PARTS OF THE UK, WITH THE AIM OF REDRESSING THE IMBALANCE BETWEEN TOWN AND COUNTRYSIDE IN ARTS AVAILABILITY AND PARTICIPATION.



CLICK or TAP to go back to CONTENTS PAGE

The Summer Solstice:

The Bard of Compton Chamberlayne

Each year, around 21st June, the Northern Hemisphere experiences the Summer Solstice—the longest day and shortest night of the year. For many people it passes almost unnoticed, marked only by an exceptionally late sunset and lingering twilight. Yet for thousands of years, the Summer Solstice was one of the most significant events in the human calendar, celebrated by cultures across the world as a moment of wonder, spirituality, and communal gathering.

Long before clocks, calendars and weather forecasts, people lived in close relationship with the rhythms of the natural world. The movement of the sun determined when crops were planted, when livestock were moved, and when communities prepared for the changing seasons. The Summer Solstice represented the peak of the sun's power, a turning point in the year when daylight reached its greatest extent before gradually beginning its slow decline towards winter.

Archaeological evidence reveals that many ancient monuments were aligned with the rising or setting sun on the solstice. Perhaps the most famous is Stonehenge in Wiltshire, where thousands still gather each year to witness the dawn sunlight shining directly through the monument's ancient stones. Similar alignments can be found throughout Europe, Asia, and



the Americas, demonstrating that people across continents regularly observed and celebrated this celestial event.

For ancient farmers, the Solstice was both a celebration and a reassurance. The crops were growing, livestock were thriving, and the warmth of summer promised abundance. Communities marked the occasion with feasts, music, dancing and rituals designed to honour the forces of nature upon which their survival depended. Fire often played a central role in these celebrations and bonfires were lit on hilltops across Europe, symbolising the sun's strength and serving as a communal focal point for festivities.

In Scandinavian countries, Midsummer remains one of the most important annual celebrations. Families and friends gather outdoors to dance around

decorated poles, wear flower crowns, and enjoy traditional food. The festival reflects traditions that stretch back centuries and highlights humanity's enduring desire to celebrate the height of summer.

Many ancient religions viewed the Solstice as a sacred moment when the boundary between the earthly and spiritual worlds seemed especially thin. The sun was often revered as a life-giving force, and ceremonies sought blessings for health, prosperity, and successful harvests. Although the

Humanity's Ancient Celebration of Light



When the sun stands still

specific beliefs varied widely, the underlying themes of renewal, thanks and connection to nature were remarkably universal.

The Summer Solstice also inspired mythology and folklore. In Britain, stories spoke of magical plants gathered on Midsummer's Eve, while Shakespeare immortalised the mysterious atmosphere of the season in *A Midsummer Night's Dream*, where enchantment and mischief flourish beneath the shortest night of the year.

Today, while most of us no longer rely on the sun's annual cycle for our survival, the Summer Solstice continues to hold a special fascination. It reminds us that despite our modern technologies, we remain connected to the same celestial rhythms that guided our ancestors. The sight of a late evening sky glowing long after sunset evokes something timeless—a shared human experience stretching back through millennia.

In an age dominated by screens and schedules, the Summer Solstice offers a gentle invitation to pause, step outside,

and appreciate the natural world. It is a moment to celebrate light, life and the enduring relationship between humanity and the heavens.

As the sun reaches its highest point in the sky and daylight lingers deep into the evening, we participate—whether consciously or not—in a tradition older than recorded history. The Summer Solstice remains a powerful reminder that some of humanity's most meaningful celebrations are rooted not in what we create, but in what we observe and share together beneath the same sky.

A DODDLE

	1		5	8		6		9
9					3		4	
	5	3	4			7		
	8		3	5		4	9	
5		6		7	4		1	
2								7
3	2					8		
7	6		8		2	1	5	
				6	1			3

MUCH TOUGHER

	7				3			
5		4					9	
	2		6	7			1	
		5				6		
		7			9			1
8				5		2		7
			2		6		7	
	9	2				8		
				3	8			



TO COMPLETE THESE PUZZLES PLEASE PRINT THIS PAGE ON YOUR PRINTER.

- 1) Set your printer to print this page
- 2) Ensure your page is set to **LANDSCAPE** orientation.
- 3) Ensure your printing is reduced to fit your A4 sheet (80%). Do not print at 100%.



July's Brain Gym

HOW TO PLAY SUDOKU

The objective of the puzzle is to complete the grid so each of the rows, columns and 3 x 3 sub-grids contains the numbers 1 to 9. The challenging part of the puzzle is that each number can only appear once per row, column, or sub-grid.

HOW TO PLAY SUM SQUARE

Each side of the shape must add up to the number shown. The numbers you can place are 1-9 and each number can only appear once. Some of the numbers are already used.



SUM SQUARE

3	+		+		=15
+		×		×	
	-		+		=8
-		+		-	
5	+		÷		=2
<u>7</u>		<u>15</u>		<u>2</u>	



DATE

5 July
Trinity 5

12 July
Trinity 6

19 July
Trinity 7

26 July
Trinity 8

UPPER NADDER BENEFICE SERVICES

Ansty
Swallowcliffe
Chilmark
Hindon
Chicklade
Fonthill Bishop
Fonthill Gifford
Tisbury*

-	-	-
11.15	M	JA
11.15	AAC	MH
-	-	-
-	-	-
08.00	HCBCP	RHS
09.30	AAS	JA

11.15	PC Patronal	BB
-	-	-
-	-	-
09.30	PC	GB
-	-	-
08.00	HCBCP	GB
-	-	-
09.30	PC	+RC

-	-	-
08.00	HCBCP	TH
11.15	AAC	TF
-	-	-
09.30	MBCP	JA
-	-	-
18.00	CE Ecumenical	JA

-	-	-
11.15	M	LAY
-	-	-
09.30	PC	JN
-	-	-
-	-	-
11.15	MBCP	JD
09.30	PC	MC

LOWER NADDER BENEFICE SERVICES

Barford St Martin
Baverstock
Compton Chamberlayne
Dinton
Fovant
Sutton Mandeville
Teffont Evias
Teffont Magna

11.15	AAC	MG
11.15	Baptism	EB
09.30	PC	BH
09.30	AAC	MG
08.00	HC02T	EB
15.00	Drumhead Service	EB/JD
16.00	AAS	EB
-	-	-
-	-	-

09.30	MCW	LAY
-	-	-
-	-	-
-	-	-
-	-	-
-	To Sutton	-
09.30	Mcw	EB
11.15	AAC	EB
-	-	-

BENEFICE SERVICE

-	-	-
10.00	AAC	EB
-	-	-
-	-	-
-	-	-
-	-	-
-	-	-
-	-	-

09.30	PCBCP	MG
-	-	-
-	-	-
09.30	Mcw	EB
09.30	PC	MH
-	To Fovant	-
-	-	-
11.15	AAC and Baptism	EB

SERVICES

- AAC** All Age Communion
- AAS** All Age Service
- BCP** Book of Common Prayer
- CbE** Communion by Extension
- CE** Choral Evensong (BCP)
- CW** Common Worship
- DS** Devotional Service
- E** Evensong or Evening Prayer
- FC** All Age Family Communion
- HC** Holy Communion (*said*)
- HC02T/C** Order 2 Communion, *traditional/contemporary*
- M** Mattins or Morning Prayer
- MPr** Morning Praise
- PC** Order 1 Communion (*with hymns*)
- PCt** Order 1 Communion, *traditional language (with hymns)*
- PC02T** Order 2 Communion, *traditional language (with hymns)*

- PC02T/C** Order 2 Communion, *traditional/contemporary*
- RS** Reflective Service
- SoP** Songs of Praise
- SoW** All Age Service of the Word

CLERGY

Upper Nadder Benefice

- AT** Anthony Thomas
- BB** Barry Blackford
- GB** Guy Bridgewater
- JA** Judy Anderson
- JD** Julie Dunstan
- JP** Joanna Percival
- LE** Louise Ellis
- MC** Michael Camp
- MH** Mark Hayter
- MG** Michael Goater

- ND** Nigel Done
- NW** Nigel Worn
- RHS** Ruth Howlett-Shiple
- TM** Tony Monds
- TH** Tim Hiller
- TF** Tina Fox
- +AR** Bishop Andrew

Lower Nadder Benefice

- +SL** Bishop Stephen Lake
- AB** Andrew Bryant
- BH** Barney Hopkinson
- EB** Elaine Brightwell
- JT** Jenny Taylor
- MG** Michael Goater
- MH** Mark Hayter
- PC** Pat Clegg
- SD** Stephen Dunwoody



Healing & Wholeness



Come to join us in the stillness, bringing with you anything you wish to pray for that is near to your heart and for healing for a world troubled by war.



Jesus is the Light of the world
Wednesday July 8th, 4.00pm

St John the Baptist Church, Tisbury

St Andrew's Chapel

Holy God, faithful and unchanging, draw us more deeply into the mystery of your love

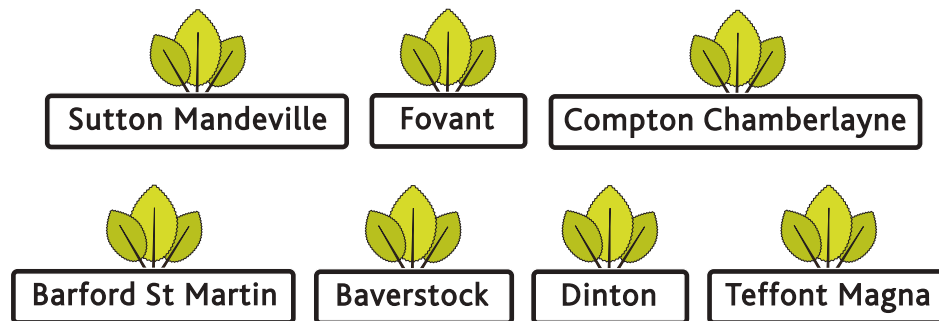
* HOLY COMMUNION is celebrated every Wednesday at 10.00am at St John's, Tisbury.



All Things Bright and Beautiful ...and they were!

The incredibly beautiful Flower Festival
that was held in the Lower Nadder Benefice
on 20th & 21st June 2026

CREATED BY AN EXCEPTIONALLY TALENTED GROUP
OF FLOWER ARRANGERS FROM SEVEN VILLAGES
IN THE NADDER VALLEY





Sutton Mandeville



Fovant







Compton Chamberlayne





Compton Chamberlayne





Barford St Martin









Dinton



Teffont Magna



The sun shined on the fields
the pleasant summer sun,
the ripe fruits in the garden
He made them every one



CLICK or TAP to go back
to the CONTENTS PAGE



Teffont Magna



Barford St Martin



Burcombe



TEA and CHATS

A talk about The Dog's Trust

ALL WELCOME

Wednesday 22nd July

2-4pm in St Martin's church.

There is no charge, donations for the church and the Dog's Trust

Jenny Barrett

jennybarford@gmail.com



Sutton Mandeville



All Saints Church
Sutton Mandeville

MONTHLY DRAW RESULTS



MAY 2026

1st £40 — 42

2nd £20 — 74

3rd £10 — 61

To join in please contact Kate Clutterbuck
kateclutterbuck5@gmail.com



CLICK or TAP to go back to the CONTENTS PAGE



Trekkers raise nearly £92,000 for the Stars Appeal in support of Salisbury Hospital

A group of 29 local people who completed a trek in the foothills of the Indian Himalayas are celebrating after raising £91,973 for the Stars Appeal, Salisbury Hospital's Charity.

The trekkers journeyed from McLeod Ganj, home of the Dalai Lama, and over five days wound up and down steep mountain trails, reaching altitudes of 3,000m.

A special celebration evening was held on Tuesday, June 2, at the White Hart Hotel in Salisbury to announce the total raised by the trekkers.

First-time trekker, Adrian Abbott, from Salisbury, who was cared for at the hospital after a cardiac arrest in 2023, said: "I'm really proud to have played a part in raising this fantastic total, and I feel very fortunate to have met such an inspiring group of people. The trek was tough, and definitely not a holiday, but reaching the camp together as a team and seeing those incredible mountain views was really special.

"The Stars Appeal is incredibly important to me and projects funded by the charity supported me after my cardiac arrest. We are so lucky to have the hospital and the support the Stars Appeal



provides - you can't walk through the hospital without seeing the difference the charity is making."

Colin Ford, from Salisbury, who has been treated for three separate cancers and completed three Stars Appeal treks, added: "The trek was challenging but the camaraderie and support of everyone was incredible. It's been 10 years since my last cancer, and taking on this trek is my way of thanking all the staff at the hospital for the life-saving care I

have received. I wouldn't be here without them.

"I have benefited from so many facilities funded by the Stars Appeal during my treatment, from CT and MRI scanners to the free Wi-Fi and tea and coffee trollies on the wards. The charity has made the care I've received even better and this money raised will help people like me, now and in years to come."



their fundraising. Their dedication is truly inspiring, and our hospital wouldn't be able to offer everything it does for patients, their families and the incredible staff, without supporters like them. Their efforts make a difference to many people every day."

The Stars Appeal also revealed its next trek destination. In February 2028, supporters can set out on an 100km adventure across the Sahara Desert. To find out more, and sign up for the launch event this October, visit www.starsappeal.org/event/stars-appeal-trek-2028/

During the celebration, Stars Appeal Fundraising Committee member Louise Hall gave the committee's thanks to the trekkers. Staff from the hospital, who volunteer as Stars Appeal Clinical Ambassadors, spoke of the difference funds raised for the charity make to patients.

Louise Hall said: "A huge thank you to all our trekkers for their incredible commitment and determination, and to everyone who has so generously supported

**TOP: The Stars Appeal trekkers with Stars Appeal Fundraising Committee member Louise Hall and Stars Appeal Hospital Ambassadors. Picture by Dave Key
MIDDLE: The trekkers celebrate reaching Triund Top**



CLICK or TAP to go back to CONTENTS PAGE



Tisbury

EXCITING PODCAST

FOUND GROWING in the Nadder Valley!

Stories, People and Events from
Tisbury and the Cranborne Chase

tistalk.co.uk
With Mary Myers and Guests!



Fovant

St George's 50/50 Lottery Club

THE WINNING NUMBERS IN THE JUNE 2026 DRAW:

1st £35 — 23

2nd £25 — 43

3rd £15 — 142

THIS IS THE EIGHTH DRAW OF THIS 'LOTTERY YEAR'.

Very many thanks for your support in providing
funds to the church to help with all these things
that continually need attention.

Liz Daw and Sharon Knight

Liz Daw 01722 714362

or liz.daw1@btinternet.com



CLICK or TAP to go back
to the CONTENTS PAGE

Do you run a small business?

We have over 650 subscribers who just might want to know about you!

ADVERTISE WITH US FOR 6 MONTHS — Half page – £60 | Whole page – £120 | Double page spread – £180
ADVERTISE WITH US FOR A WHOLE YEAR — Half page – £100 | Whole page – £200 | Double page spread – £300



Would you like to advertise your business but have no artwork?
We will design and produce your ad for FREE with a minimum order of half page for 6 months.
Design & Advertising: Jan Kalinowski | jan@villagebuzz.online | mobile: 07881 288027

BRAIN GYM solutions

A DODDLE

4	1	2	5	8	7	6	3	9
9	7	8	6	1	3	2	4	5
6	5	3	4	2	9	7	8	1
1	8	7	3	5	6	4	9	2
5	9	6	2	7	4	3	1	8
2	3	4	1	9	8	5	6	7
3	2	1	9	4	5	8	7	6
7	6	9	8	3	2	1	5	4
8	4	5	7	6	1	9	2	3

TOUGHER

1	7	6	9	4	3	5	2	8
5	3	4	1	8	2	7	9	6
9	2	8	6	7	5	4	1	3
3	1	5	7	2	4	6	8	9
2	4	7	8	6	9	3	5	1
8	6	9	3	5	1	2	4	7
4	8	3	2	9	6	1	7	5
6	9	2	5	1	7	8	3	4
7	5	1	4	3	8	9	6	2

SUM SQUARE

3	+	4	+	8	=15
+	■	×	■	×	
9	-	2	+	1	=8
-	■	+	■	-	
5	+	7	+	6	=2
<u>7</u>		<u>15</u>		<u>2</u>	



Advertising and article submission deadline



Monday 20 July

If you plan to submit ready-made advertising please ensure that the file is in the format of either a high resolution Acrobat PDF file or a high resolution JPEG (300ppi) file – If we have to amend your artwork/image to make it usable, we reserve the right to add a small charge for doing this work, thank you.



Entry

Adults £ 5
Children £ 2

All donations and
gifts welcome

Tel: 07715 639 842

Open Garden Hatch House

Sunday 30th August, 11 am to 4.30 pm
Hatch House, Newtown, Tisbury SP3 6PA

Featuring Lady Rumbold's & Mrs Fairhurst's
Celebrated Pre-loved Clothes Marquees

Books . Curios . Bric-a-Brac . Jumble . Raffle . Artisan Sellers
BBQ by Compton McRae . Teas . Cakes . Ice Creams

www.salisburyhospicecharity.org.uk



Kindly sponsored by



battbroadbent
SOLICITORS



CLICK or TAP to go back
to the CONTENTS PAGE