

VILLAGE BUZZ



A MONTHLY MAGAZINE FOR VILLAGES IN AND AROUND THE NADDER VALLEY, SALISBURY, WILTSHIRE

MAY 2026



It's Spring Again!



This is a PDF file with INTERACTIVITY.
Simply CLICK or TAP any email, web address or page link.



Contents page

Just **click** or **tap** on any of the panels below to take you to the relevant two page spread.



Species of the month
Collared Dove
Peter Thompson
spread 3



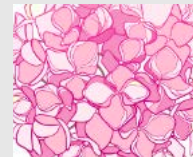
GROW YOUR OWN VEGETABLES
spread 17



POETRY
May
AE Houseman
spread 8



Brain Gym
spread 20



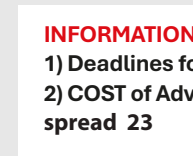
MOPHEAD MILDRED
Spring
spread 12-13



Nadder Valley Benefice
Church Services
spread 21



Dr Kinlin's Focus Session
Anxiety & Depression
spread 8



INFORMATION:
1) Deadlines for SUBMISSIONS
2) COST of Advertising in Village Buzz
spread 23



TO PRINT A SPREAD: Village Buzz has a new page numbering format that ties in with the spread you see on your screen. Each spread now has only one 'page' number (eg these 2 pages are now spread 2), so to print out a particular spread simply specify the spread number at the bottom.

Dear Reader: Do you have an interesting story to tell or a hilarious tale or memorable experience to share? Is there a special poem that moves you? Or do you have a fascinating family history or a passionate interest that you would like to spread the good word about? **Email us** and we will create an attractive article in Village Buzz for you and our readership to enjoy reading together — Just send me your text and any images to: jan@villagebuzz.online and we'll do the rest.

We combine traditional building skills, passed down through generations, with modern day techniques and materials to fulfil your lifestyle aspirations.

That's why we make great buildings that stand the test of time. Buildings made for living. A place that people call home. Not just for now, but for generations to come.

MOULDING

THE COUNTRY HOUSE BUILDERS

01722 742228 | thecountryhousebuilders.co.uk



Species of the month

Collared Dove

Peter Thompson, Barford.

We probably all know the collared dove – the dove that sits on a roof top or television aerial, calling out its distinctive koo-KOO-kook song, sometimes repeated up to a dozen times, with the middle syllable much longer than the first and last. Then, after a pause, it's off again with the same monotonous song, which over time can become slightly annoying!

But were you aware that this now common dove, only turned up in this country in the 20th century, first breeding near Cromer, Norfolk in 1955?

Originally this bird was found from the Red Sea to Korea and the Indian sub-continent. It bred in Turkey and southern Yugoslavia in the early 1930's and then expanded its territory explosively northwest. By 1940 it was found in Austria, Hungary and southern Germany. It had arrived in Poland, Denmark and the Low Countries by 1950, and then went on to colonise the UK.

It's uncertain why they've had such success, and what made them suddenly start to spread across Europe. However, with between three and six broods per year, their expansion has been able to happen very quickly indeed. There are now over 800,000 pairs breeding in the UK.



Given favourable weather conditions, collared doves may nest in any month of the year. Despite the very small number of eggs laid for each nesting attempt, which is invariably two, they will have multiple nesting attempts.

The male collared dove displays by flying up at steep angle with noisy wingbeats, then gliding down in spiral with wings and tail fully spread, giving a wheezing call during the glide. He also attracts the female by giving a ritualised bowing display, just like other members of the pigeon and dove family.





The nest is a rather pathetic, flimsy platform of sticks and twigs which the male gathers, giving them to the female, who then constructs the nest. It is usually placed in a conifer or thorn tree, but sometimes these doves can select the most extraordinary places to build a nest.



They often choose the attachment arm of a security camera or Sky dish to nest on and have even been known to nest on a set of traffic lights. Famously, a pair in Kent built a nest in a large Christmas tree, put up for the occasion and covered in flashing lights and decorations. When the contractors came to take the festive tree down, they removed the lights but left the tree for another month, so

that the birds could successfully fledge their young.

Watch a film that has been made and based in England, that is set in times prior to the 1950s, and you will invariably hear the collared dove calling away in the background

– which of course is an impossibility. Not something that the technical sound advisors or consultant personal are probably aware of!

— PT

Peter Thompson lives in Barford St. Martin and has worked in conservation and farming all his life. He is Chair of the Salisbury & District Natural History Society and would be delighted if readers joined either the society's Facebook page or the society itself – or indeed both! If you are interested, please see details on the right.

SALISBURY & DISTRICT NATURAL HISTORY SOCIETY



REGULAR FIELD MEETINGS & INDOOR TALKS

Founded in 1952, the society studies and records the natural history of Salisbury and the surrounding area.

No expertise is needed to join us! Everyone with an interest in nature and the countryside is welcome.

Annual subscription is only £10

Family membership – £15

Junior membership – Free

So, if you would like to find out more about the wildlife in your local area, and meet friendly, like-minded people, go to:

www.salisburynaturalhistory.com



www.facebook.com/groups/salisburynaturalhistorysociety



Lawn care to the highest possible standards

Get an INSTANT, no obligation quote by using our online lawn measuring tool in 3 easy steps:

[GET INSTANT QUOTE](#)

- 1 Enter your postcode
- 2 Outline your lawn
- 3 Submit your details



What makes Lawntech stand out from the crowd?

-  **A track record of over 30 years experience, delivering consistent professionalism**
-  **Highly qualified and accomplished technicians with over 130 years of combined experience**
-  **Offering a sustainable approach to lawn care, using semi organic fertilisers. Fully organic treatment programme available**



FREephone 08000 665 465

Free to call - landlines and mobiles

info@lawn-tech.co.uk

www.lawn-tech.co.uk



Lawntech™

  **CLICK or TAP to go back to the CONTENTS PAGE**

If you run a business you'd like our readership to know about, let us know.



jan@villagebuzz.online | gill@villagebuzz.online

villagebuzz.online
because that's where we are – online

River Dipping Event inspires the next generation of conservationists



Barford St Martin



Burcombe

The Barford St Martin Community Fund and Wessex Rivers Trust recently combined forces to inspire many local youngsters about the wide array of wild creatures that can be found hidden beneath the surface of the River Nadder.

This fascinating event was run by the experienced duo of Tracy Standish, Senior Education Officer for the Wessex Rivers Trust and local conservation expert, Pete Thompson.

This specially organised River Dipping morning held on the River Nadder in Barford St Martin was a complete eye-opener for all those attending.

Many of the group attending took to the water with special nets to catch whatever was hiding in the gravel and weed. These were then tipped into water-filled trays so that those waiting on the riverbank could, with the aid of information sheets, inspect and identify what had been caught in the river.

It was a wonderful natural history lesson for both children and adults. They studied four species of fish – stickleback, bullhead, alevin (baby trout), and minnows as well as water snails. Pea mussels, leeches, freshwater shrimps, caddis fly larvae and dragonfly nymphs were just a few of the incredible creatures that were identified. All of these were



Some of the River Dipping group searching for creatures in the River Nadder
Photo credit: Pete Thompson



Tracy Standish (Centre) with Hamish (left) and Otis Walker (right)
Photo credit: Morag Walker

carefully placed back in the river after the event.

Pete Thompson, said, “For children to see and be able to study creatures such as bullhead fish closely is an opportunity for them to experience creatures that they

have probably not seen before. This was an important introduction to the natural world, that will hopefully grow into a life-long passion. Going out and exploring nature in its natural environment is a wonderful way to inspire young minds and the youngsters that attended today

certainly showed their enthusiasm. The parents thoroughly enjoyed it too!”

A crucial element of the day was to also explain the measures needed to ensure the future of these important creatures and the conservation work that is needed to maintain these habitats in good condition. It is hoped that coming to events like this will encourage some of these enthusiastic youngsters to become the next generation of professional conservationists.

The two River Dipping sessions were organised by the Barford St Martin Community Fund with grateful thanks to Tracy Standish from Wessex Rivers Trust for supplying all the necessary equipment and enthusiastic expertise.

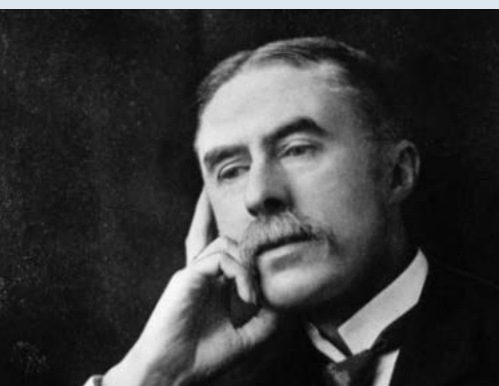
The Barford St Martin Community Fund is a fund-raising group that supports a wide range of projects in the village with the emphasis on conservation and environmental improvements which benefit residents.

For further information on this, please contact: Morag Walker, The Barford Community Fund
email: morag@moragwalkerpr.co.uk
Mobile: 07736 124097





Poetry Corner



Alfred Edward Housman (1859–1936), an English classical scholar and poet, has been ranked as one of the greatest scholars who ever lived, and was appointed Professor of Latin at University College London and then at Cambridge. Housman published two volumes of poetry during his life: *A Shropshire Lad* (1896) and *Last Poems* (1922). After *A Shropshire Lad* was turned down by several publishers, Housman published it at his own expense. Several composers created musical settings for Housman's work, deepening his popularity. When *Last Poems* was published in 1922, it was an immediate success. A third volume, *More Poems*, was released posthumously in 1936, as was an edition of Housman's *Complete Poems* (1939). Despite acclaim as a scholar and a poet in his lifetime, Housman lived as a recluse, rejecting honours and avoiding the public eye.

May

BY AE HOUSMAN

Yonder see the morning blink:
The sun is up, and up must I,
To wash and dress and eat and drink
And look at things and talk and think
And work, and God knows why.

Oh often have I washed and dressed
And what's to show for all my pain?
Let me lie abed and rest:
Ten thousand times I've done my best
And all's to do again.

How clear, how lovely bright,
How beautiful to sight
Those beams of morning play;
How heaven laughs out with glee
Where, like a bird set free,
Up from the eastern sea
Soars the delightful day.

Today I shall be strong,
No more shall yield to wrong,
Shall squander life no more;
Days lost, I know not how,
I shall retrieve them now;
Now I shall keep the vow
I never kept before.

Ensanguining the skies
How heavily it dies
Into the west away;
Past touch and sight and sound
Not further to be found,
How hopeless under ground
Falls the remorseful day.



CLICK or TAP to go back to the CONTENTS PAGE



TALK

A Doctor Explains.....

Dr Lindsay Kinlin has expanded her successful and very well received talks on various medical issues. Dinton has also now agreed to host these informative and often amusing discursive talks which take place at Fovant Village Hall on the 4th Thursday of the month at 4pm, and on the 2nd Thursday of the month at Dinton Village Hall. It's an open invitation to ALL who may be interested (patients and others alike, wherever you live).
www.fovantvillage.com/health-well-being



Dr Kinlin's Focus Sessions

Thur 14 May

Dinton Village Hall 4 – 5pm

Thur 28 May

Fovant Village Hall 4 – 5pm

'Anxiety & Depression'



CLICK or TAP to go back to CONTENTS PAGE



EST. 2004

COMPTON SMITH

INTERIORS

- Interior decorating consultancy.
 - Bespoke curtains, blinds and upholstery.
 - Suppliers of well-known specialist paints.
 - Extensive fabric & wallpaper library.
- Farrow & Ball, Edward Bulmer, Little Greene, Pierre Frey, Colefax & Fowler, Fermoie, Lewis and Wood, Sanderson Design Group and many more designers.



CLICK or TAP to go back to the CONTENTS PAGE



Mondays to Thursdays: 08.30 - 17.30
Fridays: 08.30 - 17.00 Saturdays: 09.30 - 13.00
Tel: +44 (0)1747 850150 info@comptonsmith.co.uk
10d Wincombe Business Park, Shaftesbury, Dorset, SP7 9QJ

WWW.COMPTONSMITH.CO.UK



TISBURY COMMUNITY CHOIR
Director: Graham Dalby

PRESENTS

MUSIC FROM THE GREAT AMERICAN SONGBOOK

Including music from:
 IRVING BERLIN,
 COLE PORTER,
 RODGERS & HAMMERSTEIN
 AND THE GERSHWINS

FRIDAY 22nd MAY
AT THE NEW VIC HALL, TISBURY.
DOORS AND BAR OPEN AT 7PM

SUPPORTED BY TISBURY PARISH COUNCIL
 AND THE CO-OP SOCIETY

IN AID OF SALISBURY HOSPICE



SAVE THE DATE!

Saturday 30th May
FOVANT HOUSE
 NGS OPEN GARDEN 2-5pm

Home Made Teas, Jams, and Plant Stall
£8 entrance, children free, well-behaved dogs on leads welcome.

Teas proceeds to St. Georges Church Fovant
 Parking available car park opposite Church





Teasel
Furniture Makers

Handmade
Bespoke
Cabinetry

Please contact us with any project enquiries.

07561 091 252

sam@teaselfurnituremakers.co.uk

www.teaselfurnituremakers.com

teaselfurniture.makers

Manor Farm, Sutton Mandeville, SP35NL



SlimmingWorld

TISBURY

HINTON HALL, CHURCH STREET

MONDAY 7PM

EVELYN - 07825 556871



real food, real support, real results

feel
real
good



Boiler Servicing & Maintenance

BREAKDOWNS | REPAIRS | OIL | GAS | LPG

Mark Benfield

07974 249287

mark@mabheatingservices.co.uk

YOUR LOCAL FULLY QUALIFIED
PLUMBER AND HEATING ENGINEER

Over 30 years experience

- Gas & Oil
- Plumbing
- Heating
- Boiler & Cooker Servicing

No call out charge

Same day and emergency service available

Please contact Harvey on 07767887788

or contactrcm@gmail.com

Gas Safe Registration no 133743





Mophead Mildred

It's spring again and we gardeners are raring to go!

We enjoyed some lovely warm days at the end of April although the nights remained chilly and cold winds during the day have frazzled soft new buds on a few shrubs and climbers, particularly magnolias, wisteria (if not against a warm wall) and clematis. The latter should produce fresh, new growth but the former two will probably only produce sporadic blooms throughout the summer. Thanks to the excessive rainfall this winter, the moss on my flower beds is again abundant, but the birds took advantage of this earlier in the year for their nest-building so I shouldn't really grumble. Will we have another hot, dry summer? Who knows, it's certainly shaping up to be a dry spring.



This month, it is time to pot up your tubs and baskets with summer bedding plants if you haven't already. But don't forget that frosts can still occur until the end of May, so keep an eye on the weather and if a chilly night (below 5°C) is forecast, either put them back

in a greenhouse or cover them with fleece if they are staying outside. If they are still in a greenhouse, then start to leave the door open during the day and on frost-free nights to acclimatise them. By the last week in the month it should be safe enough to leave all bedding outside at night although some people do risk doing this by mid-May.

Shrubs and perennials that are having their star turn this month include the stunningly architectural *Viburnum plicatum* f. *tomentosum* 'Shasta' with its horizontally layered branches covered in small, upright white blossoms. *Astrantia*

'Sunningdale Variegated' is a beautiful small perennial for lightly shaded places. Its new spring foliage is fresh green and cream fading to mid-green over the summer. The flowers are creamy-pale pink and the flower heads can be retained as they turn light brown, or cut off in the hope of coaxing out a second flush of blooms. *Geum* Fiery Tempest is an absolute star



for a bright splash of brilliant soft red. The small flowers are held on slim stems above the leaves and bounce prettily in the breeze for several weeks. There is also a soft orange variety called Totally Tangerine. A lovely evergreen shrub that is beginning to flower in the spring garden is *Choisya* Aztec Pearl, with its glossy, fine-leaved foliage and masses of small white flowers. These are scented although not everyone likes the smell and it will repeat flower later in the summer. It is easy to prune to keep neat and reaches about 120cm in Mildred's garden.

Finally, as always, remember to leave yourself time and space to simply sit, enjoy your garden and tell yourself what a great job you are doing keeping

it looking lovely. It's meant to be a pleasure and a joy, not a nightmare of never-ending work!

- 1 *Geum* 'Fiery Tempest'
- 2 *Viburnum plicatum* f. *tomentosum* 'Shasta'
- 3 *Astrantia* 'Sunningdale Variegated'
- 4 *Choisya* Aztec Pearl

BEE-FRIENDLY COMPANION PLANTS

- Borage (*Borago officinalis*)
- Chives (*Allium schoenoprasum*)
- Lavender (*Lavandula angustifolia*)
- Nasturtium (*Tropaeolum majus*)
- Common Marigold (*Calendula officinalis*)
- Sunflower (*Helianthus annuus*)

BEE-FRIENDLY SPRING-FLOWERING TREES

- Goat Willow (*Salix caprea*)
- European Pear (*Pyrus communis*)
- Crab Apple (*Malus sylvestris*)



SAVE THE DATE!



Dinton



On 17th May Hydes House

will be holding an open afternoon under the
NATIONAL GARDENS SCHEME
TICKETS £8, CHILDREN FREE

The Friends of St Mary's Dinton
will be fund-raising with tea and cake
at the Old School Room.



Dinton

DINTON OPEN GARDENS

On 14th June

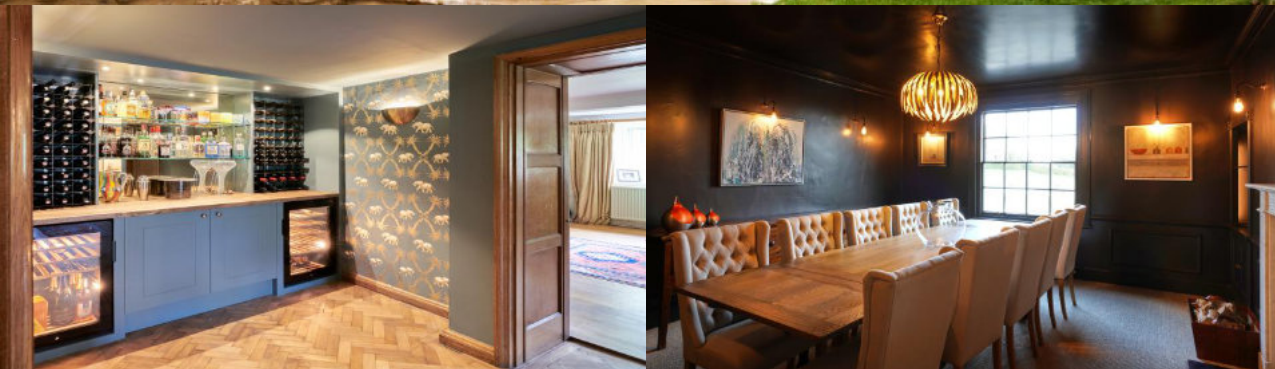
**a select number of Dinton Gardens
will be open for the afternoon**

PLEASE SUPPORT GENEROUSLY!

THE OLD SCHOOL ROOM DINTON

The Friends of St Mary's will be serving tea and cake in the sunshine!
Proceeds to the St Mary's Tower Repair Fund supporting our ongoing work
with the PCC to take care of our beautiful church.





Fonthill House Garden,

Tisbury, SP3 5RZ

Saturday 4th July

11am-4pm

Entrance £10.00, includes the
Fair & Gardens

www.rareplantfair.co.uk

**NOT TO
BE MISSED!!**



Tisbury

EXCITING PODCAST

FOUND GROWING
in the Nadder Valley!

Stories, People and Events from
Tisbury and the Cranborne Chase

tistalk.co.uk
With Mary Myers and Guests!



SAVE up to 10%
on your heating oil!



Join our **BUYING CLUB!**

- IT'S FREE TO JOIN
- Independent of suppliers • Order for more than one location
- Pay the supplier direct • Local supplier and depots
- Fortnightly reminders with opportunities to place orders
- Over 1200 members buying 1.5 million litres annually!

FOR FREE REGISTRATION AND TO COMPARE RECENT PRICES VISIT

www.nadder.oilbuyingclub.com

  CLICK or TAP to go back
to the CONTENTS PAGE

Broad Chalke

SAVE
THE DATE!

BROAD CHALKE OPEN GARDENS

ARE BACK BY POPULAR DEMAND!

SUNDAY 7th JUNE 2026

Explore some lovely English gardens,
and enjoy a traditional English Tea!

By kind permission of their owners, a varied
selection of Broad Chalke's gardens will be opened
to the public from midday to 5.30pm.

Entry to all participating gardens costs only
£8 per person, children go free. Entry Tickets,
Tea & Cakes will be on sale on the day at the
Village Hall.

Proceeds this year will be split between the Village Hall
refurbishment project and Broad Chalke-based CRESS –
supporting Christian refugees in Africa.

Please come along to support these good causes.
Further details will be published nearer the time.

In the meantime, for further information
contact **Ashley & Jenny Truluck** at:

mail@broadchalke.net





Sutton Mandeville

GROW YOUR OWN

Rent a plot on Sutton Mandeville Allotments

Gardening is good for physical and mental wellbeing. You know where your vegetables come from and you save money at the till.



Apply today!
Cost: £40pa
for 7x15m plot
(half plot £20pa)

ENQUIRIES:
JACK DEVERELL

MOBILE/TEXT:
07899 793069



FOVANT BADGES SOCIETY

Annual Drumhead Service

SUNDAY 5 JULY 2026

3.00pm

(Please be seated by 2.45pm)

AT EAST FARM, FOVANT SP3 5JD

Follow signs on the A30

Please come
ALL WELCOME

To this poignant
Service of Remembrance



CLICK or TAP to go back
to the CONTENTS PAGE



Fighting the proposed closure of Wilton's Fire Station

From Roy Wide – Barford Resident to Jan Kalinowski – Village Buzz

Dear Jan,

I gather from Rowena Fairbairn that you are researching for your May edition an item covering the proposed closure of Wilton Fire Station. The notes below, and my enclosed answers to the DWFRS consultation, are written from the perspective of a Barford St Martin resident, but probably apply to many Nadder villages.

I attended last Friday evening's public meeting at Castle Meadow in Wilton. About 30 people attended, but most appeared to be members of the Fire Service community and their families; John Glen MP and I were among the few unaffiliated public present.

It was most informative, if rather introspective. A video of a dwelling fire set against fire service reaction times if Wilton station were closed was particularly worrying. The key issues I took from it:

1. Poor Fire & Rescue Authority scrutiny and incompetence has allowed a 1.5% budget shortfall to be turned into a proposal to reduce front line operational capability by 16%. We are two thirds of the way through the "public

consultation" period and the bulk of the population are unaware of the closures proposed and their consequences. In particular, no effort has been made to communicate with the highest risk population - the elderly, the sole occupier, the none IT aware.

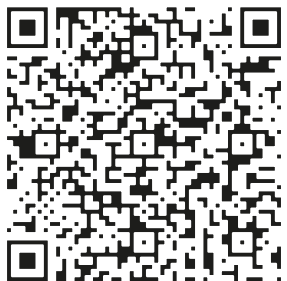
2. Barford St Martin will be in the greatest distance response zone of approximately 20 minutes from Salisbury and Tisbury. The death risk in dwelling fires substantially rises beyond 16 minute response threshold. So whilst our expected response time can be expected to double, our death risk will increase exponentially.
3. No account has been taken of local age profiles or unusual circumstances such as Barford's high proportion of mobile homes and thatch roofs. Insurance consequences have not been addressed. No doubt premiums will rise.
4. John Glen and four fellow MPs (Con & SDLP) are due to meet with the responsible minister in the next two weeks to raise the issue of rural/urban funding imbalance.

I enclose a copy **on the right** of what I have submitted in answer to the DWFRS consultation on their website (see below).

Regards

Roy Wilde

To view the Consultation's Questionnaire click the QR code



Dorset and Wiltshire Fire & Rescue Authority Consultation

* Required

Section A - About you

Which best describes you? (Select one primary role) *

Local Resident

Business Owner

Elected Official

DWFRS Operational Staff (Wholtime including fire control)

DWFRS Operational Staff (on-call)

DWFRS Staff (Corporate)

Other Representative

DORSET AND WILTSHIRE FIRE & RESCUE AUTHORITY CONSULTATION

Section A

Wilton Station is important to me as, without it, the village of Barford St Martin will be at the greatest fire response times from both Salisbury and Tisbury.

Section B

We need to see sufficient detailed response and resilience data set in the context of our village and its population. For example, being midway between Salisbury and Tisbury our current Wilton 9-10 minute response time, has to be viewed against a population of 35% single occupancy, of whom 56% are pensioners. We need detailed revised death risk assessment for the proposed closure.

Section C

The proposals have all the appearance of a shallow introspective plan, poorly presented to the electorate, that gambles on the degree of public interest and reaction producing the least embarrassing answer. I am amazed that the Fire & Rescue Authority have allowed such an unprofessional approach to be pursued. The data in the DWFRS consultation is focused upon the station location, rather than the geographical hinterland that will be more severely affected by closures.

Strange multiple choice questions, framed to ease collation rather than allowing residents to list more than 3 worries.

Section D

This crude "turkeys voting for Christmas" approach will produce an acceptable answer. However, it indicates the Fire & Rescue Authority have already failed in their scrutiny and lack the leadership to take hard decisions. It also indicates a lazy consultancy approach by the Premier Advisory Group.

Having experienced 4 decades in the public sector, I am shocked that a Chief Fire Office cannot manage a 1.5% revenue problem and that the Fire & Rescue Authority have not fought with Central Government for funding on his behalf. Why should the residents of Wiltshire suffer such a funding imbalance when compared to London residents? For 2026/7 budget total local government expenditure per Wiltshire resident is £1,104, for the London Borough of Tower Hamlets (the so-called "poorest" borough) it is £1,452! Why the £350 shortfall?


Section E

I understand that 16 minutes fire response is the critical survival threshold in dwelling house fires. In a village of senior population median age and high proportion of single occupancy, the doubling of F&R response time will have a far greater impact on death risk of vulnerable pensioners.

Almost a quarter of the population of Barford St Martin live in mobile homes with associated higher fire risks of construction material and cooking/heating arrangements. These residents



FACT CHECK!

| QUESTION: | DORSET & WILTSHIRE FIRE AND RESCUE SAY: | WE SAY: |
|-----------------------------------------------------------------------------|-----------------------------------------------------------------------------------------------------------------------------------------------------------------------------------------------------|-------------------------------------------------------------------------------------------------------------------------------------------------------------------------------------------------------------------|
| How has availability changed since the review? | 66% 2024 - 2025 (Appendix 5* p2, rounded to nearest whole number) | 73% July 25 - Jan 26 2025 data from Freedom of information request |
| How have mobilisations changed since the review? | Total: 154 times / year 119 Fire Engine per year 35 Water Carrier per year Averaged data from 2019/20-2023/24 (Appendix 5* p23 & Appendix 5a p61) | Total: 252 times / year 207 Fire Engine per year 45 Water Carrier per year 2025 data from Freedom of information request |
| Where are the nearest appliances and their current availability? | Salisbury 2 Fire Engines, 9-12 minutes Amesbury 2 Fire Engines, 20-23 minutes Tisbury 1 Fire Engine, 26 minutes (Appendix 5*: Table 12) | Salisbury On-call availability: 29% Amesbury availability: 1st Engine 71% & 2nd 4% Tisbury availability: 58% (2025 data from Appendix 5 & FOI) |
| How is resilience affected? | "resilience in the area may provide future challenges" (Appendix 5*: 5.4, p15) | We agree, only one fire engine in the Salisbury and surrounding areas at night, on average |
| Does the selection criteria contradict the 'no neighbouring stations' rule? | No two neighbouring stations selected (26-07 Station Reviews, p9) |  |

are almost entirely pensioners. In addition, the Alabaré attendance centre has a unique risk profile for its mentally disabled and learning difficulty clients.

Geographical location will be influential; should Wilton station be abandoned, Barford St Martin will be midway, and hence have the longest response time, from Salisbury and Tisbury. There are 26% of the village population living in rented dwellings with an associated maintenance and fire risk challenge. In addition there are 15 thatched dwellings of historical significance, one of national significance.

Section F

Some public indication that individual members of the Fire & Rescue Authority are prepared to abandon party politics and exploit national media to expose the crippling imbalance between rural and urban Central Government funding would be most welcome.

As a first inspirational step, the 18 members of the Fire & Rescue Authority should be requested to forego their annual local government allowance of £14,471, donating it the DWF&R budget.

THE CONSULTATION ENDS ON 15TH MAY.



CLICK or TAP to go back to the CONTENTS PAGE



Barford St Martin



BARFORD ST MARTIN VILLAGE

FETE

RECREATION GROUND, DUCK LANE, SP3 4AN
SATURDAY 20TH JUNE 2026 FROM 12:30 - 4:30PM

OFFICIAL OPENING BY AUTHOR MARK DAWSON

MUSIC FROM SALISBURY CITY BAND OF THE ROYAL BRITISH LEGION
DISPLAYS FROM ASPIRE MARTIAL ARTS, CRANBORNE CHASE NATIONAL LANDSCAPES & DOG AGILITY WITH FIELDTASTIC
RADIO ODSTOCK COMING LIVE FROM THE EVENT

DUCK RACES ON THE RIVER NADDER - BBQ - TEA TENT - RAFFLE - COCONUT SHY
PLANTS FROM FIGSBURY FLOWERS - HOMEMADE CRAFTS BY ALABARÉ - TOMBOLA
GOLF PUTTING - BEERTENT - BRIC-A-BRAC - JEWELLERY - BOUNCY CASTLE

FOLLOW SIGNS FOR PARKING

ALL FUNDS RAISED WILL SUPPORT THE BARFORD ST MARTIN COMMUNITY FUND
FRIDAY 19TH JUNE 6.30PM - QUIZ NIGHT AND SUPPER WITH AUCTION OF PROMISES



A DODDLE

| | | | | | | | | |
|---|---|---|---|---|---|---|---|---|
| | | | 7 | 3 | | 6 | | |
| 1 | | 3 | | | | | | 5 |
| | 7 | 9 | | 5 | 6 | 1 | 3 | |
| 9 | | | 1 | | | | | |
| | 4 | | 3 | 7 | | 2 | 8 | |
| | 2 | 8 | | | 9 | 5 | | 7 |
| 4 | | | 6 | 8 | | | | |
| | | 6 | | | | 9 | 2 | |
| 8 | | 5 | | 9 | 7 | 3 | | 6 |

MUCH TOUGHER

| | | | | | | | | |
|---|---|---|---|---|---|---|---|---|
| | | 6 | | | | 5 | | |
| | | 4 | | 5 | | 9 | | |
| 9 | | | | | | | | 6 |
| 3 | | | 8 | | 9 | | | 5 |
| | | | 3 | 4 | 2 | | | |
| | 7 | | | | | | 2 | |
| | 4 | | | | | | 5 | |
| 7 | | | | | | | | 8 |
| | 8 | 2 | 1 | | 7 | 6 | 3 | |



TO COMPLETE THESE PUZZLES PLEASE PRINT THIS PAGE ON YOUR PRINTER.

- 1) Set your printer to print this page
- 2) Ensure your page is set to **LANDSCAPE** orientation.
- 3) Ensure your printing is reduced to fit your A4 sheet (80%). Do not print at 100%.



May's Brain Gym

HOW TO PLAY SUDOKU

The objective of the puzzle is to complete the grid so each of the rows, columns and 3 x 3 sub-grids contains the numbers 1 to 9. The challenging part of the puzzle is that each number can only appear once per row, column, or sub-grid.

HOW TO PLAY SUM SQUARE

Each side of the shape must add up to the number shown. The numbers you can place are 1-9 and each number can only appear once. Some of the numbers are already used.

[SOLUTIONS ON SPREAD 23](#)

SUM SQUARE

| | | | | | |
|-----------|---|----------|---|-----------|-----|
| | + | | + | | =13 |
| + | | + | | × | |
| | × | 6 | - | | =47 |
| × | | ÷ | | + | |
| 9 | + | | + | | =17 |
| <u>90</u> | | <u>2</u> | | <u>10</u> | |



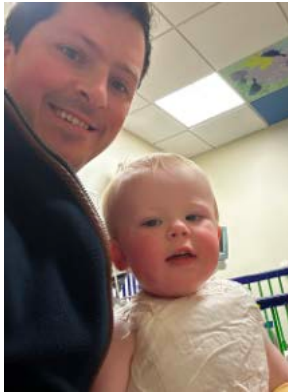
CLICK or TAP to go back to the CONTENTS PAGE



Runners set for London Marathon challenge to support the Stars Appeal

Sixteen runners will lace up their trainers to take on the London Marathon in support of the Stars Appeal, Salisbury Hospital's Charity.

Amongst the team of runners taking on the challenge on Sunday, April 26, is Charles Carter, from Salisbury, who was inspired to run after his son, Cuthbert (Cutty), received care at Salisbury District Hospital for serious burns after spilling tea over himself at 17-months-old.



Cutty, who is now three, underwent two operations, including a skin graft, and spent two weeks on Sarum Children's Ward.

Charles, 42, said: "The support we received from Salisbury Hospital and the Stars Appeal made all the difference, from play areas, play therapists, facilities, wi-fi and even a bed so his mummy had somewhere to sleep in his room."



"As soon as Cuthbert's risk of infection was low enough for him to come out of his room and he could play with all the toys in the play areas and the sensory room provided by the Stars Appeal, our son was brought back to life, he started smiling again," added Charles. "The work of the Stars Appeal ensures children like Cutty, and their families, receive the best possible care, comfort, and support during the toughest times."

Jamie Jackson, from Salisbury, is also part of Team Stars Appeal. He is running to thank the hospital and its charity for helping him recover after a car accident in 2020 in Cambridge.

The 29-year-old sustained serious injuries to his hand. Skin from his leg had to be grafted onto his hand, impacting his walking. After surgery to his hand and leg he returned home to Salisbury to start his rehabilitation at Salisbury Hospital.

He said: "After my accident, I only had use of one hand and one strong leg. Everyday tasks like cleaning my teeth or putting on a pair of socks became a real struggle. Salisbury District Hospital played a huge role in getting my life back on track.

"I spent eight long and challenging months with the plastics, hand therapy, Wessex Rehabilitation, and laser unit teams, followed by two years of ongoing treatment as I recovered from my life-changing injuries. Without the help of everyone at the hospital and the specialist equipment and facilities provided by the Stars Appeal I would not have the life I have today."

Consultant Surgeon and Chair of the Stars Appeal Ambassadors, Mr Graham Branagan said: "We're wishing all our incredible London Marathon runners the very best of luck. Every mile they run helps support the Stars Appeal's work across the hospital, making a difference to patients and their families. Thank you to all our runners and to everyone who has so generously donated."

So far, the team have raised £27,000.

To donate visit

www.justgiving.com/campaign/teamstarsappeal26



Barford St Martin



Burcombe



TEA and CHATS

Plenty of tea, coffee, cake and chat with many friends from our villages.

A TALK BY ROY WILDE about THE NICHOLSON TRUST. A Barford St Martin charity.

ALL WELCOME

Tuesday 14th April

2-4pm in St Martin's church.

There is no charge, donations for the church. Jenny Barrett

jennybarford@gmail.com



Sutton Mandeville



**All Saints Church
Sutton Mandeville**

MONTHLY DRAW RESULTS



MARCH 2026

1st £40 — 81

2nd £20 — 34

3rd £10 — 108

To join in please contact Kate Clutterbuck
kateclutterbuck5@gmail.com



Compton Chamberlayne

Local designer can make your business look good!

07881 288027

jan@septemberdesign.co.uk

amazing!



Fovant

St George's 50/50 Lottery Club

THE WINNING NUMBERS IN THE APRIL 2026 DRAW:

1st £35 — 100
2nd £25 — 78
3rd £15 — 128

THIS IS THE SIXTH DRAW OF THIS 'LOTTERY YEAR'.

Very many thanks for your support in providing funds to the church to help with all these things that continually need attention.

Liz Daw 01722 714362
or liz.daw1@btinternet.com



CLICK or TAP to go back to the CONTENTS PAGE

Do you run a small business?

We have over 650 subscribers who just might want to know about you!

ADVERTISE WITH US FOR 6 MONTHS — Half page – £60 | Whole page – £120 | Double page spread – £180
ADVERTISE WITH US FOR A WHOLE YEAR — Half page – £100 | Whole page – £200 | Double page spread – £300



Would you like to advertise your business but have no artwork?
We will design and produce your ad for FREE with a minimum order of half page for 6 months.
Design & Advertising: Jan Kalinowski | jan@villagebuzz.online | mobile: 07881 288027

BRAIN GYM solutions

A DODDLE

| | | | | | | | | |
|---|---|---|---|---|---|---|---|---|
| 5 | 8 | 4 | 7 | 3 | 1 | 6 | 9 | 2 |
| 1 | 6 | 3 | 9 | 4 | 2 | 8 | 7 | 5 |
| 2 | 7 | 9 | 8 | 5 | 6 | 1 | 3 | 4 |
| 9 | 5 | 7 | 1 | 2 | 8 | 4 | 6 | 3 |
| 6 | 4 | 1 | 3 | 7 | 5 | 2 | 8 | 9 |
| 3 | 2 | 8 | 4 | 6 | 9 | 5 | 1 | 7 |
| 4 | 9 | 2 | 6 | 8 | 3 | 7 | 5 | 1 |
| 7 | 3 | 6 | 5 | 1 | 4 | 9 | 2 | 8 |
| 8 | 1 | 5 | 2 | 9 | 7 | 3 | 4 | 6 |

TOUGH

| | | | | | | | | |
|---|---|---|---|---|---|---|---|---|
| 2 | 1 | 6 | 9 | 8 | 4 | 5 | 7 | 3 |
| 8 | 3 | 4 | 7 | 5 | 6 | 9 | 1 | 2 |
| 9 | 5 | 7 | 2 | 1 | 3 | 8 | 4 | 6 |
| 3 | 2 | 1 | 8 | 7 | 9 | 4 | 6 | 5 |
| 6 | 9 | 5 | 3 | 4 | 2 | 7 | 8 | 1 |
| 4 | 7 | 8 | 5 | 6 | 1 | 3 | 2 | 9 |
| 1 | 4 | 9 | 6 | 3 | 8 | 2 | 5 | 7 |
| 7 | 6 | 3 | 4 | 2 | 5 | 1 | 9 | 8 |
| 5 | 8 | 2 | 1 | 9 | 7 | 6 | 3 | 4 |

SUM SQUARE

| | | | | | |
|----|---|----|---|---|-----|
| 2 | + | 4 | + | 7 | =13 |
| + | | + | | × | |
| 8 | × | 6 | - | 1 | =47 |
| × | | ÷ | | + | |
| 9 | + | 5 | + | 3 | =17 |
| 90 | 2 | 10 | | | |

Advertising and article submission deadline



Wednesday 20 May

If you plan to submit ready-made advertising please ensure that the file is in the format of either a high resolution Acrobat PDF file or a high resolution JPEG (300ppi) file – If we have to amend your artwork/image to make it usable, we reserve the right to add a small charge for doing this work, thank you.

VILLAGE BUZZ



A MONTHLY MAGAZINE FOR VILLAGES IN AND AROUND THE NADDER VALLEY

MAY 2026

USEFUL INFORMATION

SALISBURY

HOUSEHOLD RECYCLING CENTRE

SUMMER (1 April - 31 October)

9.00am - 4.00pm

CLOSED ON THURSDAYS

WINTER (1 November to 31 March)

10.00am - 4.00pm

CLOSED ON THURSDAYS & FRIDAYS

Stephenson Road,

Churchfields Industrial Estate SP2 7NP

Tel: 01722 322309

MEDICAL

SPRING ORCHARD SURGERY

Telephone: 01722 714789

Spring Orchard Surgery, High Street, Fovant,

Salisbury, Wiltshire, SP3 5JL

OLD ORCHARD SURGERY

Telephone: 01722 744775

Old Orchard Surgery, South Street, Wilton,

Salisbury, SP2 0JU

SALISBURY DISTRICT HOSPITAL

Odstock Rd, Salisbury SP2 8BJ

Tel: 01722 336262

NICHOLSON AND BOUGH CHARITY FOR BARFORD ST MARTIN RESIDENTS

Telephone: 0797 337 8282

or write in strict confidence to:

Clerk to the Trustees, 2 The Poplars,

Barford St Martin, SP3 4AR

THEATRES/ART

Salisbury Playhouse

Malthouse Lane, Salisbury SP2 7RA

Tel: 01722 320333

Salisbury City Hall

Malthouse Lane, Salisbury SP2 7TU

Tel: 01722 434434

Salisbury Arts Centre

Bedwin St, Salisbury SP1 3UT

Tel: 01722 321744

Odeon Cinema Salisbury

New Canal, Salisbury SP1 2AA

Tel: 0333 014 4501

WILTSHIRE COUNCIL

HEAD OFFICE

Bythesea Road, Trowbridge, Wiltshire BA14 8JN

BOURNE HILL

Salisbury, Wiltshire, SP1 3UZ

Council offices are open Monday to Friday from

8.30am until 5.30pm

WILTSHIRE COUNCIL SERVICES

Worried about a child?

If you believe a child or young person is at risk

of significant harm, neglect or injury, report

your concerns to the Multi-Agency

Safeguarding Hub (MASH) on 0300 4560108.

Adult Care

Tel: 0300 456 0111

adviceandcontact@wiltshire.gov.uk

Benefits

Tel: 0300 456 0110

benefits@wiltshire.gov.uk

Blue Badges

Tel: 01225 713002

bluebadge@wiltshire.gov.uk

Building Control

Tel: 0300 456 0113

buildingcontrol@wiltshire.gov.uk

CHILDREN'S SERVICES

Early Help

Tel: 01225 718230

Children's Services

Special Educational Needs and Disability

(SEND)

Tel: 01225 757985

Children's Services Social Care

Tel: 01722 438165

COMMUNICATIONS

(press and media related enquiries)

Tel: 01225 713115 or 01225 713370

communications@wiltshire.gov.uk

Corporate Investigation Team

01249 706456

investigations@wiltshire.gov.uk

Council Tax

Tel: 0300 456 0109

counciltax@wiltshire.gov.uk

Elections

Tel: 0300 456 0112

elections@wiltshire.gov.uk

Early Years and Childcare

Tel: 0300 003 4561

earlyyears@wiltshire.gov.uk

Fraud Hotline (24 hours)

Tel: 01249 706456

Highways

Tel: 0300 456 0105 or to report

non-urgent highway defects.

Homes4Wiltshire (housing register)

Tel: 0300 456 0104

homes4wiltshire@wiltshire.gov.uk

Housing Options/Homelessness

homeless@wiltshire.gov.uk

Tel: 01722 434233

Parking

Tel: 01249 706131

parking@wiltshire.gov.uk

Pest Control, Noise and Pollution,

Environmental Health

Tel: 0300 456 0107

customerservices@wiltshire.gov.uk

Planning

Tel: 0300 456 0114

developmentmanagement@wiltshire.gov.uk

Rubbish and Recycling

Tel: 0300 456 0102

customerservices@wiltshire.gov.uk

Schools Admissions

Tel: 01225 713010

admissions@wiltshire.gov.uk

School Transport

Tel: 01225 712852

educationtransport@wiltshire.gov.uk

Can't find the service you require?

Contact Customer Services

Tel: 0300 456 0100



CLICK or TAP to go back
to the CONTENTS PAGE